

## APHC Polyclonal Antibody

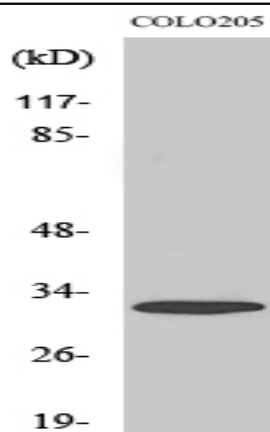
<b>Catalog No :</b>	YT0263
<b>Reactivity :</b>	Human;Mouse
<b>Applications :</b>	WB;IHC;IF;ELISA
<b>Target :</b>	APHC
<b>Fields :</b>	>>Sphingolipid metabolism;>>Metabolic pathways
<b>Gene Name :</b>	ACER3
<b>Protein Name :</b>	Alkaline ceramidase 3
<b>Human Gene Id :</b>	55331
<b>Human Swiss Prot No :</b>	Q9NUN7
<b>Mouse Gene Id :</b>	66190
<b>Mouse Swiss Prot No :</b>	Q9D099
<b>Immunogen :</b>	The antiserum was produced against synthesized peptide derived from human PHCA. AA range:171-220
<b>Specificity :</b>	APHC Polyclonal Antibody detects endogenous levels of APHC protein.
<b>Formulation :</b>	Liquid in PBS containing 50% glycerol, 0.5% BSA and 0.02% sodium azide.
<b>Source :</b>	Polyclonal, Rabbit,IgG
<b>Dilution :</b>	WB 1:500 - 1:2000. IHC 1:100 - 1:300. IF 1:200 - 1:1000. ELISA: 1:40000. Not yet tested in other applications.
<b>Purification :</b>	The antibody was affinity-purified from rabbit antiserum by affinity-chromatography using epitope-specific immunogen.
<b>Concentration :</b>	1 mg/ml

---

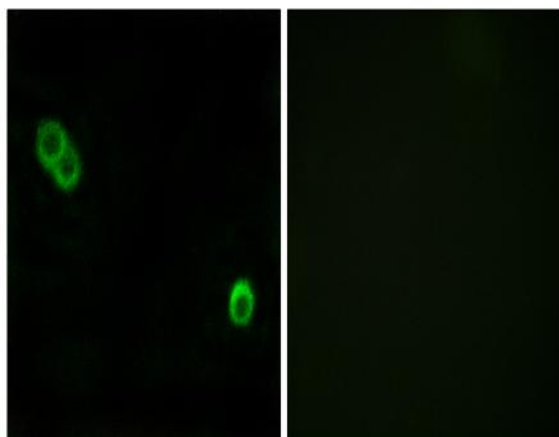
<b>Storage Stability :</b>	-15°C to -25°C/1 year(Do not lower than -25°C)
<b>Observed Band :</b>	35kD
<b>Cell Pathway :</b>	Sphingolipid metabolism;
<b>Background :</b>	enzyme regulation:Activated by Ca(2+) and inhibited by Zn(2+).,function:Hydrolyzes only phytoceramide into phytosphingosine and free fatty acid. Does not have reverse activity.,similarity:Belongs to the alkaline ceramidase family.,tissue specificity:Ubiquitously expressed. Highest expression in placenta.,
<b>Function :</b>	enzyme regulation:Activated by Ca(2+) and inhibited by Zn(2+).,function:Hydrolyzes only phytoceramide into phytosphingosine and free fatty acid. Does not have reverse activity.,similarity:Belongs to the alkaline ceramidase family.,tissue specificity:Ubiquitously expressed. Highest expression in placenta.,
<b>Subcellular Location :</b>	Endoplasmic reticulum membrane ; Multi-pass membrane protein . Golgi apparatus membrane ; Multi-pass membrane protein .
<b>Expression :</b>	Ubiquitously expressed. Highly expressed in placenta (PubMed:11356846). Expressed in erythrocytes (PubMed:20207939).
<b>Sort :</b>	2128
<b>No4 :</b>	1
<b>Host :</b>	Rabbit
<b>Modifications :</b>	Unmodified

---

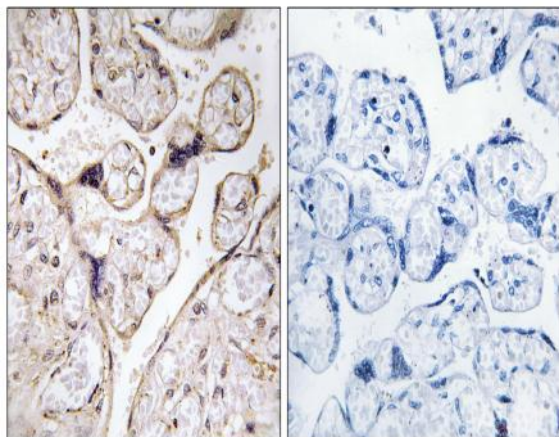
## Products Images



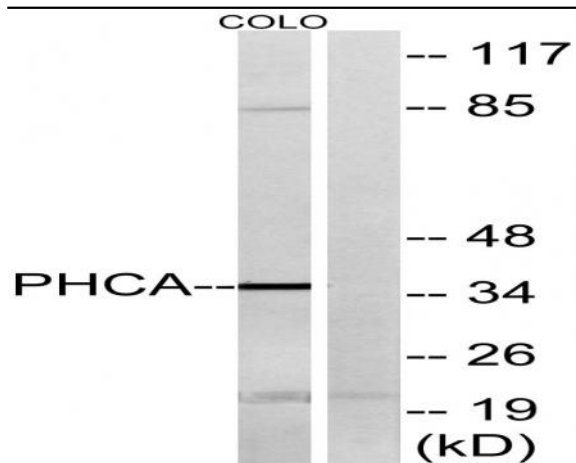
Western Blot analysis of various cells using APHC Polyclonal Antibody



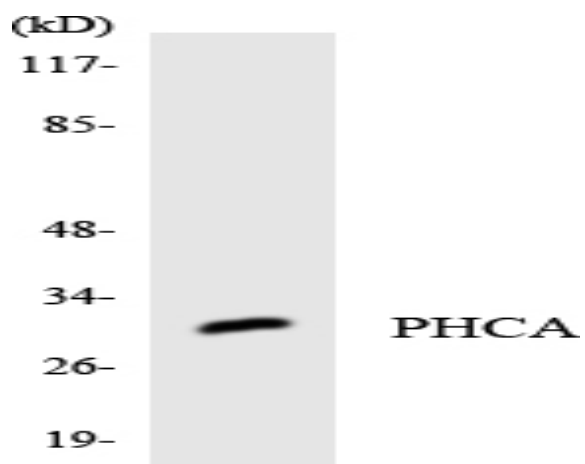
Immunofluorescence analysis of MCF7 cells, using PHCA Antibody. The picture on the right is blocked with the synthesized peptide.



Immunohistochemistry analysis of paraffin-embedded human placenta tissue, using PHCA Antibody. The picture on the right is blocked with the synthesized peptide.



Western blot analysis of lysates from COLO cells, using PHCA Antibody. The lane on the right is blocked with the synthesized peptide.



Western blot analysis of the lysates from HT-29 cells using PHCA antibody.