

ApoL5 Polyclonal Antibody

| | |
|------------------------------|---|
| Catalog No : | YT0281 |
| Reactivity : | Human |
| Applications : | IHC;IF;ELISA |
| Target : | ApoL5 |
| Gene Name : | APOL5 |
| Protein Name : | Apolipoprotein L5 |
| Human Gene Id : | 80831 |
| Human Swiss Prot No : | Q9BWW9 |
| Immunogen : | The antiserum was produced against synthesized peptide derived from human APOL5. AA range:384-433 |
| Specificity : | ApoL5 Polyclonal Antibody detects endogenous levels of ApoL5 protein. |
| Formulation : | Liquid in PBS containing 50% glycerol, 0.5% BSA and 0.02% sodium azide. |
| Source : | Polyclonal, Rabbit,IgG |
| Dilution : | IHC 1:100 - 1:300. IF 1:200 - 1:1000. ELISA: 1:40000. Not yet tested in other applications. |
| Purification : | The antibody was affinity-purified from rabbit antiserum by affinity-chromatography using epitope-specific immunogen. |
| Concentration : | 1 mg/ml |
| Storage Stability : | -15°C to -25°C/1 year(Do not lower than -25°C) |
| Molecularweight : | 47kD |
| Background : | This gene is a member of the apolipoprotein L gene family. The encoded protein |

is found in the cytoplasm, where it may affect the movement of lipids or allow the binding of lipids to organelles. [provided by RefSeq, Jul 2008],

Function : function:May affect the movement of lipids in the cytoplasm or allow the binding of lipids to organelles.,similarity:Belongs to the apolipoprotein L family.,tissue specificity:Low level of expression; detected in uterus, testis, skeletal muscle and stomach.,

Subcellular Location : Cytoplasm .

Expression : Low level of expression; detected in uterus, testis, skeletal muscle and stomach.

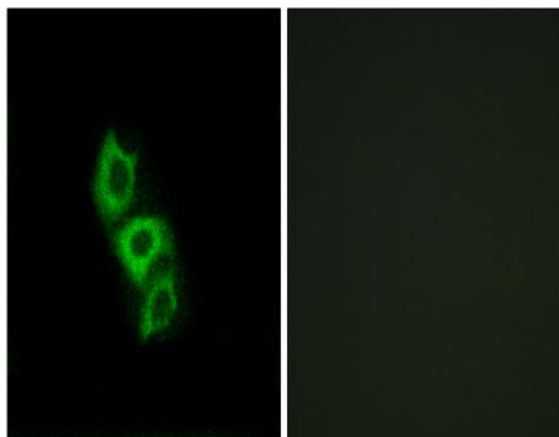
Sort : 2165

No4 : 1

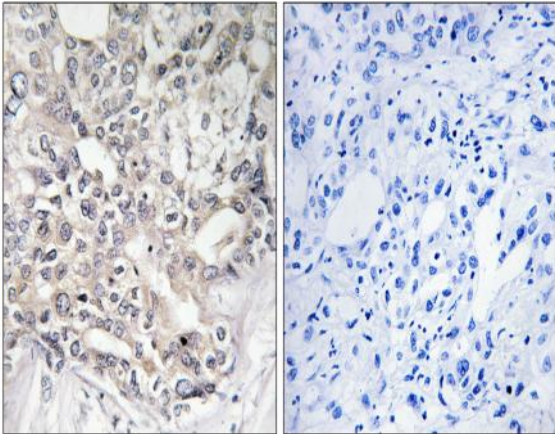
Host : Rabbit

Modifications : Unmodified

Products Images



Immunofluorescence analysis of A549 cells, using APOL5 Antibody. The picture on the right is blocked with the synthesized peptide.



Immunohistochemistry analysis of paraffin-embedded human liver carcinoma tissue, using APOL5 Antibody. The picture on the right is blocked with the synthesized peptide.