

AQP5 Polyclonal Antibody

Catalog No :	YT0293
Reactivity :	Human;Rat;Mouse;
Applications :	WB;IHC;IF;ELISA
Target :	AQP5
Fields :	>>Salivary secretion
Gene Name :	AQP5
Protein Name :	Aquaporin-5
Human Gene Id :	362
Human Swiss Prot No :	P55064
Mouse Swiss Prot No :	Q9WTY4
Immunogen :	The antiserum was produced against synthesized peptide derived from human AQP5. AA range:194-243
Specificity :	AQP5 Polyclonal Antibody detects endogenous levels of AQP5 protein.
Formulation :	Liquid in PBS containing 50% glycerol, 0.5% BSA and 0.02% sodium azide.
Source :	Polyclonal, Rabbit,IgG
Dilution :	WB 1:500 - 1:2000. IHC 1:100 - 1:300. ELISA: 1:40000.. IF 1:50-200
Purification :	The antibody was affinity-purified from rabbit antiserum by affinity-chromatography using epitope-specific immunogen.
Concentration :	1 mg/ml
Storage Stability :	-15°C to -25°C/1 year(Do not lower than -25°C)

Observed Band : 35kD

Background : Aquaporin 5 (AQP5) is a water channel protein. Aquaporins are a family of small integral membrane proteins related to the major intrinsic protein (MIP or AQP0). Aquaporin 5 plays a role in the generation of saliva, tears and pulmonary secretions. AQP0, AQP2, AQP5, and AQP6 are closely related and all map to 12q13. [provided by RefSeq, Jul 2008],

Function : domain:Aquaporins contain two tandem repeats each containing three membrane-spanning domains and a pore-forming loop with the signature motif Asn-Pro-Ala (NPA).,function:Forms a water-specific channel. Implicated in the generation of saliva, tears, and pulmonary secretions.,similarity:Belongs to the MIP/aquaporin (TC 1.A.8) family.,

Subcellular Location : Apical cell membrane ; Multi-pass membrane protein . Cell membrane ; Multi-pass membrane protein . Cytoplasmic vesicle membrane ; Multi-pass membrane protein . Hypotonicity increases location at the cell membrane. Phosphorylation decreases location at the cell membrane. .

Expression : Detected in skin eccrine sweat glands, at the apical cell membrane and at intercellular canaliculi (at protein level).

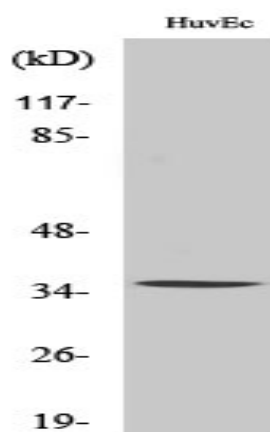
Sort : 2185

No4 : 1

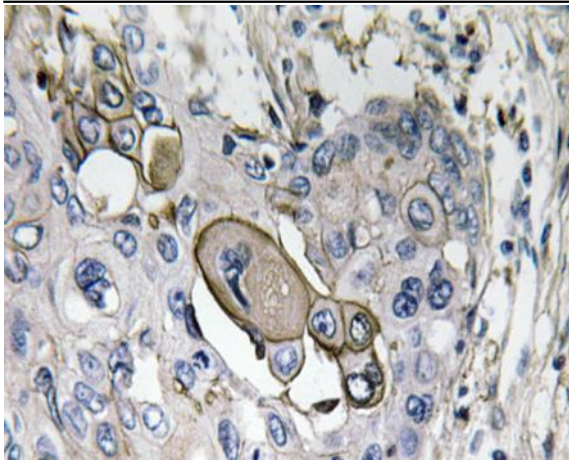
Host : Rabbit

Modifications : Unmodified

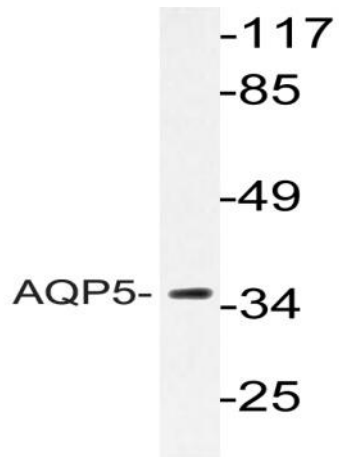
Products Images



Western Blot analysis of various cells using AQP5 Polyclonal Antibody



Immunohistochemistry analysis of AQP5 antibody in paraffin-embedded human lung carcinoma tissue.



Western blot analysis of lysate from HUVEC cells, using AQP5 antibody.