

ARHGAP1 Polyclonal Antibody

Catalog No :	YT0313
Reactivity :	Human;Mouse
Applications :	WB;IHC;IF;ELISA
Target :	ARHGAP1
Gene Name :	ARHGAP1
Protein Name :	Rho GTPase-activating protein 1
Human Gene Id :	392
Human Swiss Prot No :	Q07960
Mouse Gene Id :	228359
Mouse Swiss Prot No :	Q5FWK3
Immunogen :	The antiserum was produced against synthesized peptide derived from human RHG1. AA range:189-238
Specificity :	ARHGAP1 Polyclonal Antibody detects endogenous levels of ARHGAP1 protein.
Formulation :	Liquid in PBS containing 50% glycerol, 0.5% BSA and 0.02% sodium azide.
Source :	Polyclonal, Rabbit,IgG
Dilution :	WB 1:500 - 1:2000. IHC 1:100 - 1:300. ELISA: 1:10000.. IF 1:50-200
Purification :	The antibody was affinity-purified from rabbit antiserum by affinity-chromatography using epitope-specific immunogen.
Concentration :	1 mg/ml
Storage Stability :	-15°C to -25°C/1 year(Do not lower than -25°C)

Observed Band : 50kD

Background : This gene encodes a member of a large family of proteins that activate Rho-type guanosine triphosphate (GTP) metabolizing enzymes. The encoded protein contains a SRC homology 3 domain and interacts with Bcl-2-associated protein family members. [provided by RefSeq, Aug 2012],

Function : function:GTPase activator for the Rho, Rac and Cdc42 proteins, converting them to the putatively inactive GDP-bound state. Cdc42 seems to be the preferred substrate.,similarity:Contains 1 CRAL-TRIO domain.,similarity:Contains 1 Rho-GAP domain.,subunit:Found in a complex with XPO7, EIF4A1, ARHGAP1, VPS26A, VPS29, VPS35 and SFN. Interacts with BNIPL.,tissue specificity:Ubiquitous.,

Subcellular Location : Cytoplasm.

Expression : Ubiquitous.

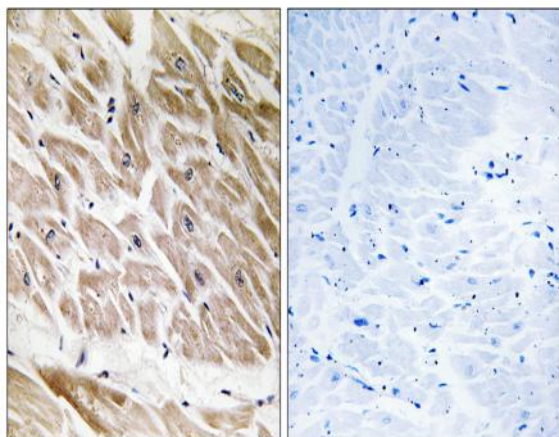
Sort : 2233

No4 : 1

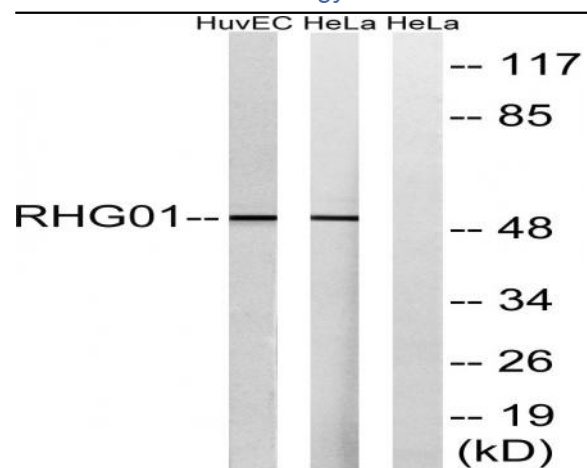
Host : Rabbit

Modifications : Unmodified

Products Images



Immunohistochemistry analysis of paraffin-embedded human heart tissue, using RHG1 Antibody. The picture on the right is blocked with the synthesized peptide.



Western blot analysis of lysates from HeLa and HUVEC cells, using RHG1 Antibody. The lane on the right is blocked with the synthesized peptide.