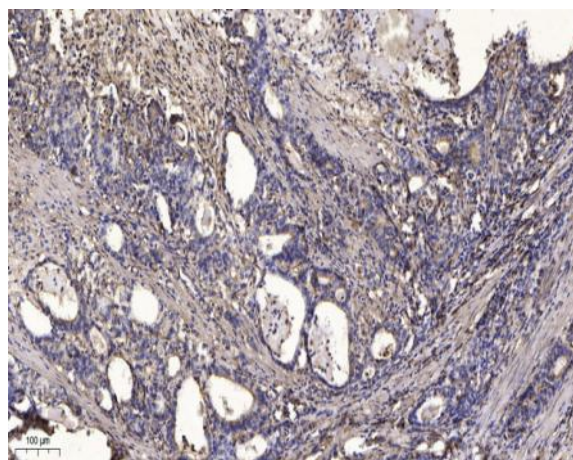


ARHGAP23 Polyclonal Antibody

Catalog No :	YT0319
Reactivity :	Human;Mouse
Applications :	IHC;IF;WB;ELISA
Target :	ARHGAP23
Gene Name :	ARHGAP23
Protein Name :	Rho GTPase-activating protein 23
Human Gene Id :	57636
Human Swiss Prot No :	Q9P227
Mouse Swiss Prot No :	Q69ZH9
Immunogen :	Synthesized peptide derived from ARHGAP23 . at AA range: 470-550
Specificity :	ARHGAP23 Polyclonal Antibody detects endogenous levels of ARHGAP23 protein.
Formulation :	Liquid in PBS containing 50% glycerol, 0.5% BSA and 0.02% sodium azide.
Source :	Polyclonal, Rabbit,IgG
Dilution :	WB 1:500-2000 IHC 1:100 - 1:300. ELISA: 1:40000.. IF 1:50-200
Purification :	The antibody was affinity-purified from rabbit antiserum by affinity-chromatography using epitope-specific immunogen.
Concentration :	1 mg/ml
Storage Stability :	-15°C to -25°C/1 year(Do not lower than -25°C)
Molecularweight :	162kD

Background :	The RHO (see ARHA; MIM 165390) family of small GTPases are involved in signal transduction through transmembrane receptors, and they are inactive in the GDP-bound form and active in the GTP-bound form. GTPase-activating proteins, such as ARHGAP23, inactivate RHO family proteins by stimulating their hydrolysis of GTP (Katoh and Katoh, 2004 [PubMed 15254754]).[supplied by OMIM, Mar 2008],
Function :	function:GTPase activator for the Rho-type GTPases by converting them to an inactive GDP-bound state.,similarity:Contains 1 PDZ (DHR) domain.,similarity:Contains 1 PH domain.,similarity:Contains 1 Rho-GAP domain.,tissue specificity:Expressed in placenta, prostate, hippocampus and brain medulla. Also expressed in brain tumor, salivary gland tumor, head and neck tumor.,
Subcellular Location :	cytosol,extracellular exosome,
Expression :	Expressed in placenta, prostate, hippocampus and brain medulla. Also expressed in brain tumor, salivary gland tumor, head and neck tumor.
Sort :	2239
No4 :	1
Host :	Rabbit
Modifications :	Unmodified

Products Images



Immunohistochemical analysis of paraffin-embedded human Gastric adenocarcinoma. 1, Antibody was diluted at 1:200(4° overnight). 2, Tris-EDTA,pH9.0 was used for antigen retrieval. 3,Secondary antibody was diluted at 1:200(room temperature, 45min).