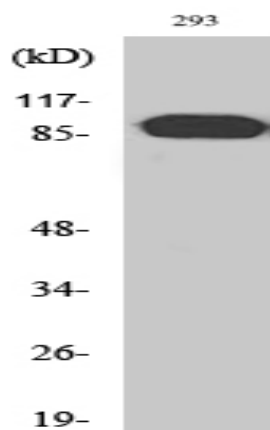


ARHGEF19 Polyclonal Antibody

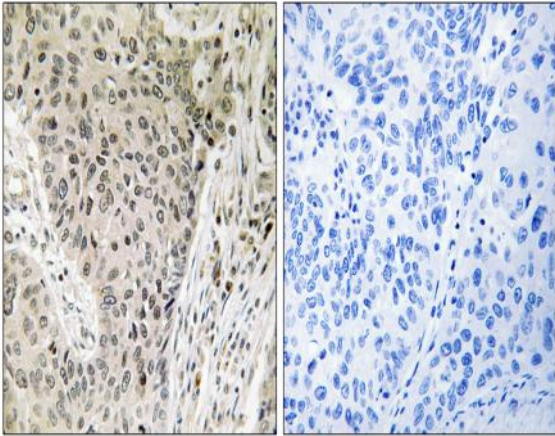
Catalog No :	YT0323
Reactivity :	Human;Mouse
Applications :	WB;IHC;IF;ELISA
Target :	ARHGEF19
Gene Name :	ARHGEF19
Protein Name :	Rho guanine nucleotide exchange factor 19
Human Gene Id :	128272
Human Swiss Prot No :	Q8IW93
Mouse Swiss Prot No :	Q8BWA8
Immunogen :	The antiserum was produced against synthesized peptide derived from human ARHGEF19. AA range:251-300
Specificity :	ARHGEF19 Polyclonal Antibody detects endogenous levels of ARHGEF19 protein.
Formulation :	Liquid in PBS containing 50% glycerol, 0.5% BSA and 0.02% sodium azide.
Source :	Polyclonal, Rabbit,IgG
Dilution :	WB 1:500 - 1:2000. IHC 1:100 - 1:300. ELISA: 1:20000.. IF 1:50-200
Purification :	The antibody was affinity-purified from rabbit antiserum by affinity-chromatography using epitope-specific immunogen.
Concentration :	1 mg/ml
Storage Stability :	-15°C to -25°C/1 year(Do not lower than -25°C)
Observed Band :	90kD

Cell Pathway :	Regulation of Actin Dynamics; AMPK
Background :	Guanine nucleotide exchange factors (GEFs) such as ARHGEF19 accelerate the GTPase activity of Rho GTPases (see RHOA, MIM 165390).[supplied by OMIM, Dec 2008],
Function :	function:Acts as guanine nucleotide exchange factor (GEF) for RhoA GTPase.,similarity:Contains 1 DH (DBL-homology) domain.,similarity:Contains 1 PH domain.,similarity:Contains 1 SH3 domain.,
Expression :	Colon,Pancreas,Tongue,
Sort :	2244
No4 :	1
Host :	Rabbit
Modifications :	Unmodified

Products Images



Western Blot analysis of various cells using ARHGEF19 Polyclonal Antibody



Immunohistochemistry analysis of paraffin-embedded human lung carcinoma, using ARHGEF19 Antibody. The picture on the right is blocked with the synthesized peptide.