

Brn-3a Polyclonal Antibody

Catalog No :	YT0529
Reactivity :	Human;Mouse;Rat
Applications :	WB;ELISA
Target :	Brn-3a
Gene Name :	POU4F1
Protein Name :	POU domain class 4 transcription factor 1
Human Gene Id :	5457
Human Swiss Prot No :	Q01851
Mouse Gene Id :	18996
Mouse Swiss Prot No :	P17208
Rat Swiss Prot No :	P20266
Immunogen :	The antiserum was produced against synthesized peptide derived from human POU4F1. AA range:311-360
Specificity :	Brn-3a Polyclonal Antibody detects endogenous levels of Brn-3a protein.
Formulation :	Liquid in PBS containing 50% glycerol, 0.5% BSA and 0.02% sodium azide.
Source :	Polyclonal, Rabbit,IgG
Dilution :	WB 1:500 - 1:2000. ELISA: 1:5000. Not yet tested in other applications.
Purification :	The antibody was affinity-purified from rabbit antiserum by affinity-chromatography using epitope-specific immunogen.
Concentration :	1 mg/ml

Storage Stability : -15°C to -25°C/1 year(Do not lower than -25°C)

Observed Band : 42kD

Background : This gene encodes a member of the POU-IV class of neural transcription factors. This protein is expressed in a subset of retinal ganglion cells and may be involved in the developing sensory nervous system. This protein may also promote the growth of cervical tumors. A translocation of this gene is associated with some adult acute myeloid leukemias. [provided by RefSeq, Mar 2012],

Function : developmental stage:Expression peaks early in embryogenesis (day 13.5) and is undetectable 14 days after birth.,function:Probable transcription factor which may play a role in the regulation of specific gene expression within a subset of neuronal lineages. May play a role in determining or maintaining the identities of a small subset of visual system neurons.,similarity:Belongs to the POU transcription factor family. Class-4 subfamily.,similarity:Contains 1 homeobox DNA-binding domain.,similarity:Contains 1 POU-specific domain.,tissue specificity:Brain. Seems to be specific to the retina. Present in the developing brain, spinal cord and eye.,

Subcellular Location : Nucleus . Cytoplasm .

Expression : Expressed in the brain and the retina. Present in the developing brain, spinal cord and eye.

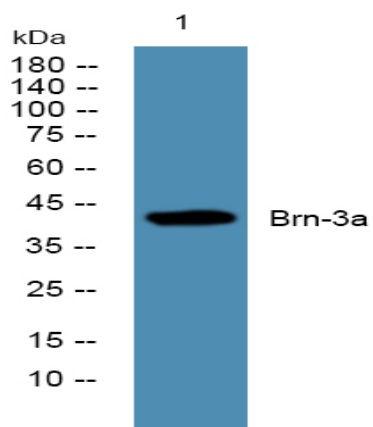
Sort : 2873

No4 : 1

Host : Rabbit

Modifications : Unmodified

Products Images



Western blot analysis of lysates from SW480 cells, primary antibody was diluted at 1:1000, 4° over night