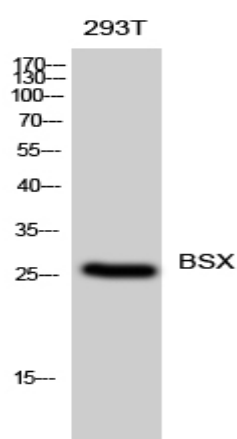


BSX Polyclonal Antibody

Catalog No :	YT0540
Reactivity :	Human;Mouse;Rat
Applications :	WB;ELISA
Target :	BSX
Gene Name :	BSX
Protein Name :	Brain-specific homeobox protein homolog
Human Gene Id :	390259
Human Swiss Prot No :	Q3C1V8
Mouse Gene Id :	244813
Mouse Swiss Prot No :	Q810B3
Immunogen :	Synthesized peptide derived from BSX . at AA range: 150-230
Specificity :	BSX Polyclonal Antibody detects endogenous levels of BSX protein.
Formulation :	Liquid in PBS containing 50% glycerol, 0.5% BSA and 0.02% sodium azide.
Source :	Polyclonal, Rabbit,IgG
Dilution :	WB 1:500 - 1:2000. ELISA: 1:5000. Not yet tested in other applications.
Purification :	The antibody was affinity-purified from rabbit antiserum by affinity-chromatography using epitope-specific immunogen.
Concentration :	1 mg/ml
Storage Stability :	-15°C to -25°C/1 year(Do not lower than -25°C)

Observed Band : 26kD**Background :** function:DNA binding protein that function as transcriptional activator. Is essentiel for normal postnatal growth and nursing. Is an essential factor for neuronal neuropeptide Y and agouti-related peptide function and locomotory behavior in the control of energy balance.,online information:Of fidgets and food -Issue 85 of August 2007,similarity:Belongs to the distal-less homeobox family.,similarity:Contains 1 homeobox DNA-binding domain.,**Function :** function:DNA binding protein that function as transcriptional activator. Is essentiel for normal postnatal growth and nursing. Is an essential factor for neuronal neuropeptide Y and agouti-related peptide function and locomotory behavior in the control of energy balance.,online information:Of fidgets and food -Issue 85 of August 2007,similarity:Belongs to the distal-less homeobox family.,similarity:Contains 1 homeobox DNA-binding domain.,**Subcellular Location :** Nucleus .**Sort :** 2887**No4 :** 1**Host :** Rabbit**Modifications :** Unmodified

Products Images



Western Blot analysis of 293T cells using BSX Polyclonal Antibody diluted at 1:500