

## Casein Kinase I $\gamma$ 2 Polyclonal Antibody

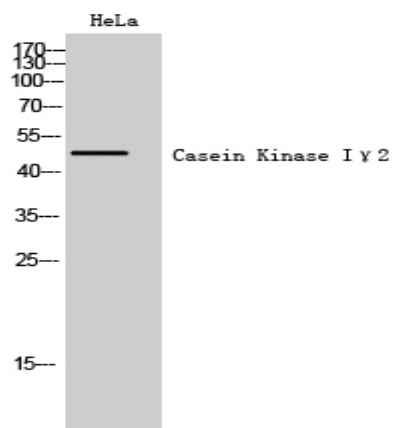
<b>Catalog No :</b>	YT0649
<b>Reactivity :</b>	Human;Mouse;Rat
<b>Applications :</b>	WB;IHC;IF;ELISA
<b>Target :</b>	Casein Kinase I $\gamma$ 2
<b>Fields :</b>	>>Hedgehog signaling pathway
<b>Gene Name :</b>	CSNK1G2
<b>Protein Name :</b>	Casein kinase I isoform gamma-2
<b>Human Gene Id :</b>	1455
<b>Human Swiss Prot No :</b>	P78368
<b>Mouse Gene Id :</b>	103236
<b>Mouse Swiss Prot No :</b>	Q8BVP5
<b>Rat Gene Id :</b>	65278
<b>Rat Swiss Prot No :</b>	Q62762
<b>Immunogen :</b>	The antiserum was produced against synthesized peptide derived from human CKI-gamma2. AA range:10-59
<b>Specificity :</b>	Casein Kinase I $\gamma$ 2 Polyclonal Antibody detects endogenous levels of Casein Kinase I $\gamma$ 2 protein.
<b>Formulation :</b>	Liquid in PBS containing 50% glycerol, 0.5% BSA and 0.02% sodium azide.
<b>Source :</b>	Polyclonal, Rabbit,IgG
<b>Dilution :</b>	WB 1:500 - 1:2000. IHC 1:100 - 1:300. IF 1:200 - 1:1000. ELISA: 1:10000. Not yet tested in other applications.

---

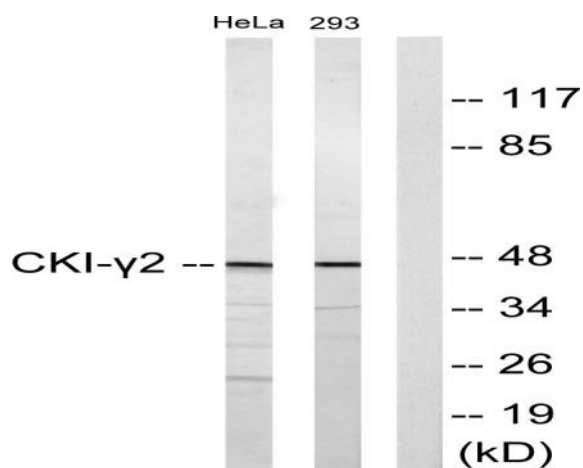
<b>Purification :</b>	The antibody was affinity-purified from rabbit antiserum by affinity-chromatography using epitope-specific immunogen.
<b>Concentration :</b>	1 mg/ml
<b>Storage Stability :</b>	-15°C to -25°C/1 year(Do not lower than -25°C)
<b>Observed Band :</b>	47kD
<b>Cell Pathway :</b>	Hedgehog;
<b>Background :</b>	catalytic activity:ATP + a protein = ADP + a phosphoprotein.,function:Casein kinases are operationally defined by their preferential utilization of acidic proteins such as caseins as substrates. It can phosphorylate a large number of proteins. Participates in Wnt signaling.,PTM:Autophosphorylated.,similarity:Belongs to the protein kinase superfamily. CK1 Ser/Thr protein kinase family. Casein kinase I subfamily.,similarity:Contains 1 protein kinase domain.,subunit:Monomer.,tissue specificity:Testis.,
<b>Function :</b>	catalytic activity:ATP + a protein = ADP + a phosphoprotein.,function:Casein kinases are operationally defined by their preferential utilization of acidic proteins such as caseins as substrates. It can phosphorylate a large number of proteins. Participates in Wnt signaling.,PTM:Autophosphorylated.,similarity:Belongs to the protein kinase superfamily. CK1 Ser/Thr protein kinase family. Casein kinase I subfamily.,similarity:Contains 1 protein kinase domain.,subunit:Monomer.,tissue specificity:Testis.,
<b>Subcellular Location :</b>	Cytoplasm, cell cortex . Cytoplasm .
<b>Expression :</b>	Testis.
<b>Tag :</b>	orthogonal
<b>Sort :</b>	3143
<b>No4 :</b>	1
<b>Host :</b>	Rabbit
<b>Modifications :</b>	Unmodified

---

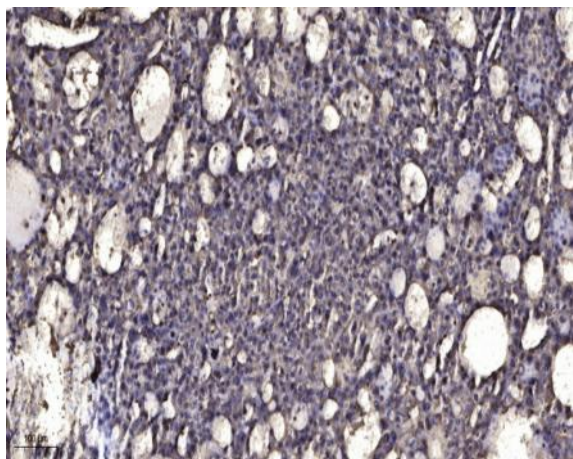
[Products Images](#)



Western Blot analysis of HeLa cells using Casein Kinase I $\gamma$ 2 Polyclonal Antibody



Western blot analysis of lysates from HeLa and 293 cells, using CKI-gamma2 Antibody. The lane on the right is blocked with the synthesized peptide.



Immunohistochemical analysis of paraffin-embedded human liver cancer. 1, Antibody was diluted at 1:200(4° overnight). 2, Tris-EDTA,pH9.0 was used for antigen retrieval. 3,Secondary antibody was diluted at 1:200(room temperature, 45min).