

## CCP3 Polyclonal Antibody

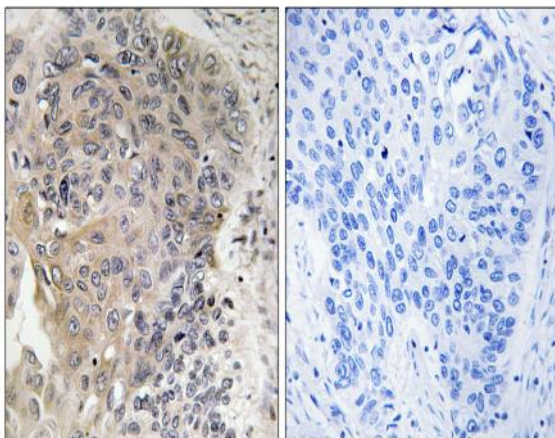
<b>Catalog No :</b>	YT0710
<b>Reactivity :</b>	Human;Mouse
<b>Applications :</b>	IHC;IF;ELISA
<b>Target :</b>	CCP3
<b>Gene Name :</b>	AGBL3
<b>Protein Name :</b>	Cytosolic carboxypeptidase 3
<b>Human Gene Id :</b>	340351
<b>Human Swiss Prot No :</b>	Q8NEM8
<b>Mouse Swiss Prot No :</b>	Q8CDP0
<b>Immunogen :</b>	The antiserum was produced against synthesized peptide derived from human AGBL3. AA range:611-660
<b>Specificity :</b>	CCP3 Polyclonal Antibody detects endogenous levels of CCP3 protein.
<b>Formulation :</b>	Liquid in PBS containing 50% glycerol, 0.5% BSA and 0.02% sodium azide.
<b>Source :</b>	Polyclonal, Rabbit,IgG
<b>Dilution :</b>	IHC 1:100 - 1:300. ELISA: 1:20000.. IF 1:50-200
<b>Purification :</b>	The antibody was affinity-purified from rabbit antiserum by affinity-chromatography using epitope-specific immunogen.
<b>Concentration :</b>	1 mg/ml
<b>Storage Stability :</b>	-15°C to -25°C/1 year(Do not lower than -25°C)
<b>Molecularweight :</b>	116kD

---

<b>Background :</b>	cofactor: Binds 1 zinc ion per subunit., function: May play a role in the processing of tubulin., similarity: Belongs to the peptidase M14 family.,
<b>Function :</b>	cofactor: Binds 1 zinc ion per subunit., function: May play a role in the processing of tubulin., similarity: Belongs to the peptidase M14 family.,
<b>Subcellular Location :</b>	Cytoplasm, cytosol .
<b>Expression :</b>	Testis,
<b>Sort :</b>	3334
<b>No4 :</b>	1
<b>Host :</b>	Rabbit
<b>Modifications :</b>	Unmodified

---

## Products Images



Immunohistochemistry analysis of paraffin-embedded human lung carcinoma, using CBCP3 Antibody. The picture on the right is blocked with the synthesized peptide.