

**CCRK Polyclonal Antibody**

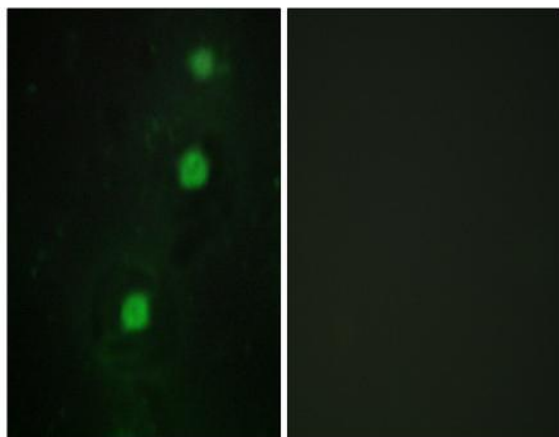
<b>Catalog No :</b>	YT0711
<b>Reactivity :</b>	Human;Mouse;Rat
<b>Applications :</b>	WB;IHC;IF;ELISA
<b>Target :</b>	CCRK
<b>Gene Name :</b>	CDK20
<b>Protein Name :</b>	Cyclin-dependent kinase 20
<b>Human Gene Id :</b>	23552
<b>Human Swiss Prot No :</b>	Q8IZL9
<b>Mouse Gene Id :</b>	105278
<b>Mouse Swiss Prot No :</b>	Q9JHU3
<b>Rat Gene Id :</b>	364666
<b>Rat Swiss Prot No :</b>	Q4KM34
<b>Immunogen :</b>	The antiserum was produced against synthesized peptide derived from human CCRK. AA range:31-80
<b>Specificity :</b>	CCRK Polyclonal Antibody detects endogenous levels of CCRK protein.
<b>Formulation :</b>	Liquid in PBS containing 50% glycerol, 0.5% BSA and 0.02% sodium azide.
<b>Source :</b>	Polyclonal, Rabbit,IgG
<b>Dilution :</b>	WB 1:500 - 1:2000. IHC 1:100 - 1:300. IF 1:200 - 1:1000. ELISA: 1:20000. Not yet tested in other applications.
<b>Purification :</b>	The antibody was affinity-purified from rabbit antiserum by affinity-chromatography using epitope-specific immunogen.

---

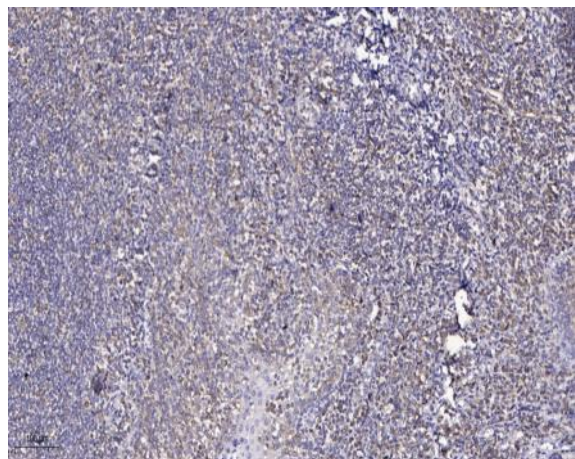
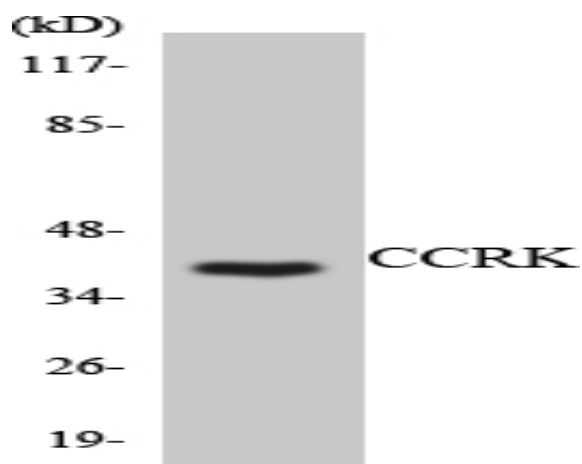
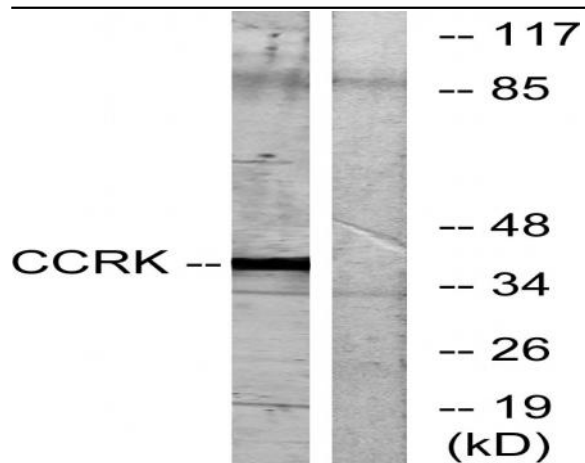
<b>Concentration :</b>	1 mg/ml
<b>Storage Stability :</b>	-15°C to -25°C/1 year(Do not lower than -25°C)
<b>Observed Band :</b>	39kD
<b>Background :</b>	The protein encoded by this gene contains a kinase domain most closely related to the cyclin-dependent protein kinases. The encoded kinase may activate cyclin-dependent kinase 2 and is involved in cell growth. Alternatively spliced transcript variants encoding distinct isoforms have been reported. [provided by RefSeq, Dec 2009],
<b>Function :</b>	similarity:Belongs to the protein kinase superfamily.,
<b>Subcellular Location :</b>	Nucleus . Cytoplasm . Cell projection, cilium .
<b>Sort :</b>	3336
<b>No4 :</b>	1
<b>Host :</b>	Rabbit
<b>Modifications :</b>	Unmodified

---

## Products Images



Immunofluorescence analysis of HUVEC cells, using CCRK Antibody. The picture on the right is blocked with the synthesized peptide.



Immunohistochemical analysis of paraffin-embedded human tonsil. 1, Antibody was diluted at 1:200(4° overnight). 2, Tris-EDTA,pH9.0 was used for antigen retrieval. 3,Secondary antibody was diluted at 1:200(room temperature, 45min).