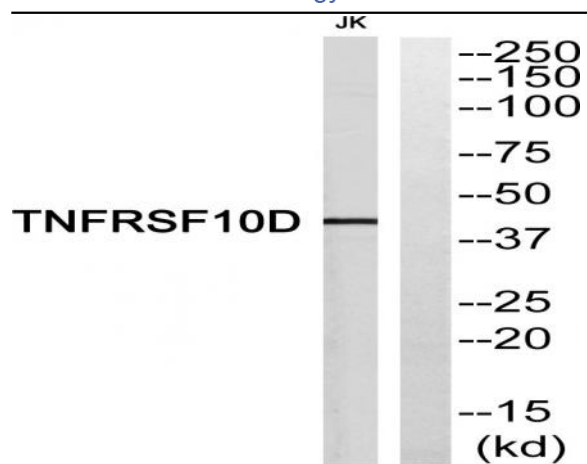


CD264 Polyclonal Antibody

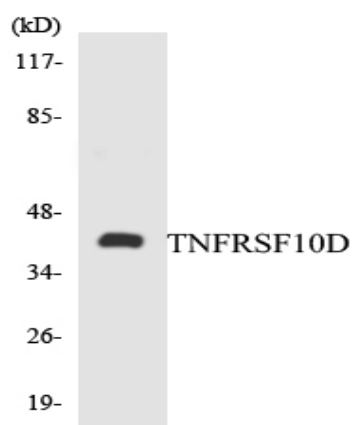
Catalog No :	YT0742
Reactivity :	Human
Applications :	WB;ELISA
Target :	CD264
Fields :	>>Cytokine-cytokine receptor interaction;>>Viral protein interaction with cytokine and cytokine receptor
Gene Name :	TNFRSF10D
Protein Name :	Tumor necrosis factor receptor superfamily member 10D
Human Gene Id :	8793
Human Swiss Prot No :	Q9UBN6
Immunogen :	The antiserum was produced against synthesized peptide derived from human TNFRSF10D. AA range:121-170
Specificity :	CD264 Polyclonal Antibody detects endogenous levels of CD264 protein.
Formulation :	Liquid in PBS containing 50% glycerol, 0.5% BSA and 0.02% sodium azide.
Source :	Polyclonal, Rabbit,IgG
Dilution :	WB 1:500 - 1:2000. ELISA: 1:10000. Not yet tested in other applications.
Purification :	The antibody was affinity-purified from rabbit antiserum by affinity-chromatography using epitope-specific immunogen.
Concentration :	1 mg/ml
Storage Stability :	-15°C to -25°C/1 year(Do not lower than -25°C)
Observed Band :	42kD

Cell Pathway :	Cytokine-cytokine receptor interaction;Apoptosis_Inhibition;Apoptosis_Mitochondrial;Apoptosis_Overview;Natural killer cell mediated cytotoxicity;
Background :	The protein encoded by this gene is a member of the TNF-receptor superfamily. This receptor contains an extracellular TRAIL-binding domain, a transmembrane domain, and a truncated cytoplasmic death domain. This receptor does not induce apoptosis, and has been shown to play an inhibitory role in TRAIL-induced cell apoptosis. [provided by RefSeq, Jul 2008],
Function :	function:Receptor for the cytotoxic ligand TRAIL. Contains a truncated death domain and hence is not capable of inducing apoptosis but protects against TRAIL-mediated apoptosis. Reports are contradictory with regards to its ability to induce the NF-kappa-B pathway (According to PubMed:9382840 it cannot but according to PubMed:9430226 it can induce the NF-kappa-B pathway).,similarity:Contains 1 death domain.,similarity:Contains 3 TNFR-Cys repeats.,tissue specificity:Widely expressed, in particular in fetal kidney, lung and liver, and in adult testis and liver. Also expressed in peripheral blood leukocytes, colon and small intestine, ovary, prostate, thymus, spleen, pancreas, kidney, lung, placenta and heart.,
Subcellular Location :	Membrane ; Single-pass type I membrane protein .
Expression :	Widely expressed, in particular in fetal kidney, lung and liver, and in adult testis and liver. Also expressed in peripheral blood leukocytes, colon and small intestine, ovary, prostate, thymus, spleen, pancreas, kidney, lung, placenta and heart.
Sort :	3499
No4 :	1
Host :	Rabbit
Modifications :	Unmodified

Products Images



Western blot analysis of TNFRSF10D Antibody. The lane on the right is blocked with the TNFRSF10D peptide.



Western blot analysis of the lysates from K562 cells using TNFRSF10D antibody.