

CD32 Polyclonal Antibody

Catalog No :	YT0754
Reactivity :	Human;Mouse;Rat
Applications :	WB;IHC;IF;ELISA
Target :	CD32
Fields :	>>Phagosome;>>Osteoclast differentiation;>>B cell receptor signaling pathway;>>Fc gamma R-mediated phagocytosis;>>Staphylococcus aureus infection;>>Tuberculosis;>>Measles
Gene Name :	FCGR2B
Protein Name :	Low affinity immunoglobulin gamma Fc region receptor II-b
Human Gene Id :	2213
Human Swiss Prot No :	P31994
Immunogen :	The antiserum was produced against synthesized peptide derived from human CD32. AA range:277-326
Specificity :	CD32 Polyclonal Antibody detects endogenous levels of CD32 protein.
Formulation :	Liquid in PBS containing 50% glycerol, 0.5% BSA and 0.02% sodium azide.
Source :	Polyclonal, Rabbit,IgG
Dilution :	WB 1:500 - 1:2000. IHC 1:100 - 1:300. ELISA: 1:5000.. IF 1:50-200
Purification :	The antibody was affinity-purified from rabbit antiserum by affinity-chromatography using epitope-specific immunogen.
Concentration :	1 mg/ml
Storage Stability :	-15°C to -25°C/1 year(Do not lower than -25°C)

Observed Band : 34kD

Background : The Fc fragment of IgG receptor IIb encoded by FCGR2B is a low affinity receptor for the Fc region of immunoglobulin gamma complexes. The encoded protein is involved in the phagocytosis of immune complexes and in the regulation of antibody production by B-cells. Variations in this gene may increase susceptibility to systemic lupus erythematosus (SLE). Several transcript variants encoding different isoforms have been found for this gene.

Tag : orthogonal

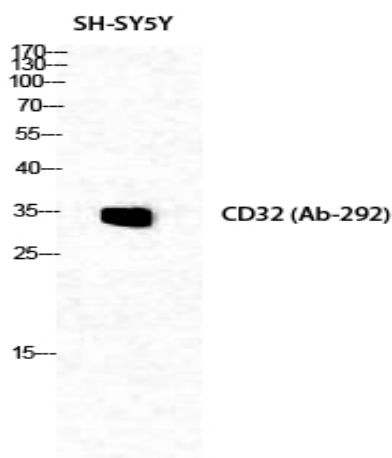
Sort : 3543

No4 : 1

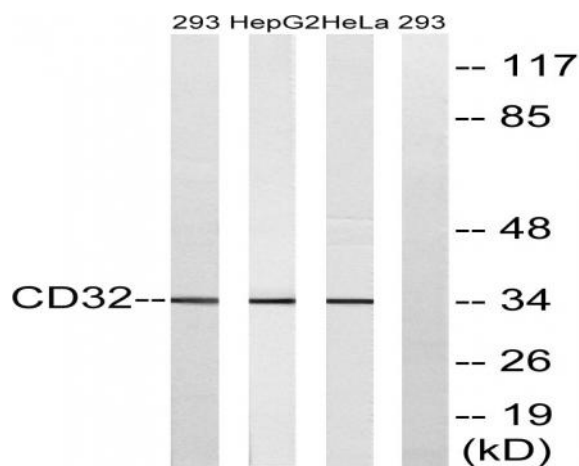
Host : Rabbit

Modifications : Unmodified

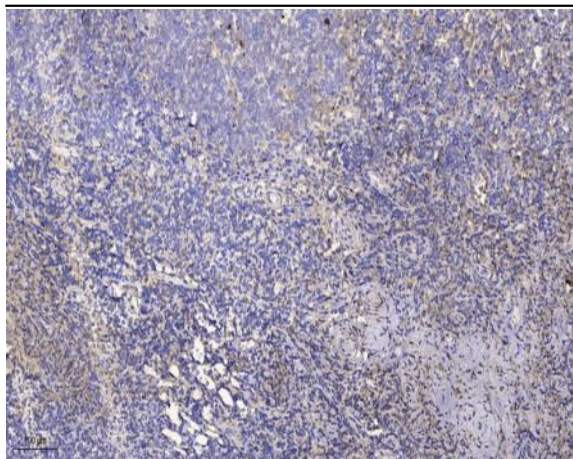
Products Images



Western Blot analysis of SH-SY5Y cells using CD32 Polyclonal Antibody diluted at 1:1000



Western blot analysis of lysates from 293, HepG2, and HeLa cells, treated with PMA 125ng/ml 30', using CD32 Antibody. The lane on the right is blocked with the synthesized peptide.



Immunohistochemical analysis of paraffin-embedded human tonsil. 1, Antibody was diluted at 1:200(4° overnight). 2, Tris-EDTA,pH9.0 was used for antigen retrieval. 3,Secondary antibody was diluted at 1:200(room temperature, 30min).