

CD34 Polyclonal Antibody

Catalog No :	YT0757
Reactivity :	Human;Mouse
Applications :	WB;IHC;IF;ELISA
Target :	CD34
Fields :	>>Cell adhesion molecules;>>Hematopoietic cell lineage
Gene Name :	CD34
Protein Name :	Hematopoietic progenitor cell antigen CD34
Human Gene Id :	947
Human Swiss Prot No :	P28906
Mouse Gene Id :	12490
Mouse Swiss Prot No :	Q64314
Immunogen :	The antiserum was produced against synthesized peptide derived from human CD34. AA range:208-257
Specificity :	CD34 Polyclonal Antibody detects endogenous levels of CD34 protein.
Formulation :	Liquid in PBS containing 50% glycerol, 0.5% BSA and 0.02% sodium azide.
Source :	Polyclonal, Rabbit,IgG
Dilution :	WB 1:500-2000;IHC 1:100-500;IF ICC 1:100-500;ELISA 1:5000-20000
Purification :	The antibody was affinity-purified from rabbit antiserum by affinity-chromatography using epitope-specific immunogen.
Concentration :	1 mg/ml

Storage Stability : -15°C to -25°C/1 year(Do not lower than -25°C)

Observed Band : 110kD

Cell Pathway : Cell adhesion molecules (CAMs);Hematopoietic cell lineage;

Background : The protein encoded by this gene may play a role in the attachment of stem cells to the bone marrow extracellular matrix or to stromal cells. This single-pass membrane protein is highly glycosylated and phosphorylated by protein kinase C. Two transcript variants encoding different isoforms have been found for this gene. [provided by RefSeq, Aug 2011],

Function : alternative products:Both isoforms are expressed on the cell surface. CD34-T/CD34-F ratio increases with cell differentiation,developmental stage:On early hematopoietic progenitor cells.,disease:Abnormal CD34 expression in leukemogenesis.,function:Possible adhesion molecule with a role in early hematopoiesis by mediating the attachment of stem cells to the bone marrow extracellular matrix or directly to stromal cells. Could act as a scaffold for the attachment of lineage specific glycans, allowing stem cells to bind to lectins expressed by stromal cells or other marrow components. Presents carbohydrate ligands to selectins.,online information:CD34 entry,PTM:Highly glycosylated.,PTM:Phosphorylated on serine residues by PKC.,similarity:Belongs to the CD34 family.,tissue specificity:Selectively expressed on hematopoietic progenitor cells and the small vessel endothelium of a variety of tiss

Subcellular Location : Membrane; Single-pass type I membrane protein.

Expression : Selectively expressed on hematopoietic progenitor cells and the small vessel endothelium of a variety of tissues.

Tag : orthogonal,hot

Sort : 1

No1 : ab81289

No3 : ab81289

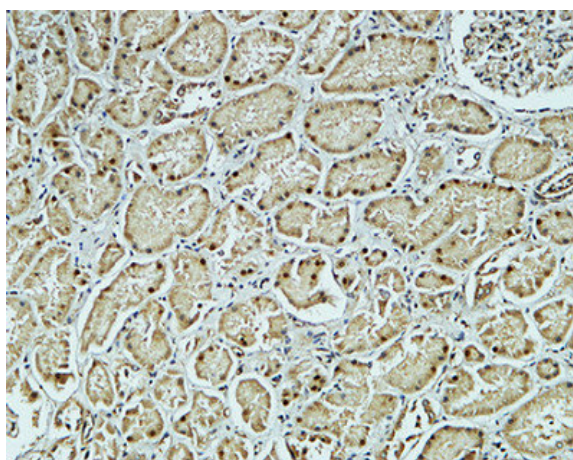
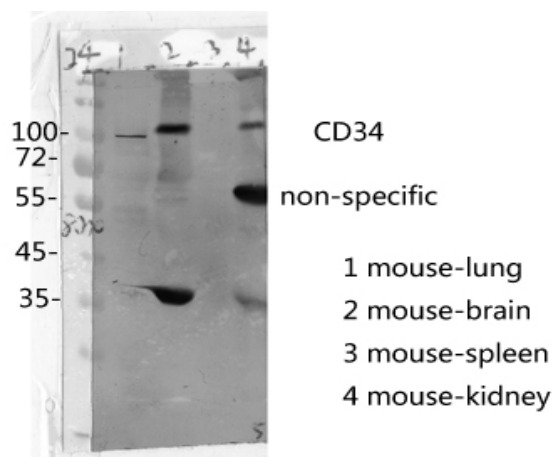
No4 : 1

Host : Rabbit

Modifications : Unmodified

Products Images

The picture was kindly provided by our customer



Immunohistochemical analysis of paraffin-embedded Human kidney. 1, Antibody was diluted at 1:200(4° overnight). 2, High-pressure and temperature EDTA, pH8.0 was used for antigen retrieval. 3, Secondary antibody was diluted at 1:200(room temperature, 30min).