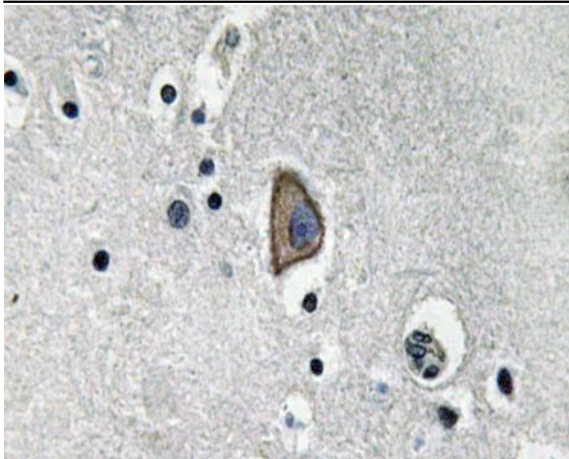


CD3-ε Polyclonal Antibody

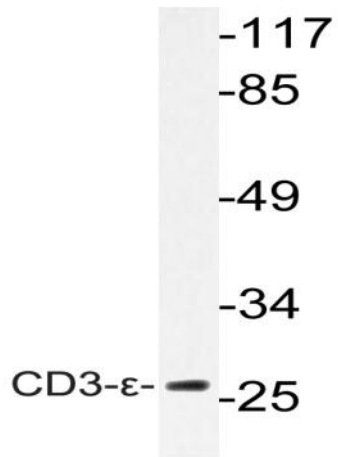
Catalog No :	YT0761
Reactivity :	Human;Rat;Mouse;Monkey
Applications :	WB;IHC;IF;ELISA
Target :	CD3E
Fields :	>>Hematopoietic cell lineage;>>Th1 and Th2 cell differentiation;>>Th17 cell differentiation;>>T cell receptor signaling pathway;>>Chagas disease;>>Measles;>>Human T-cell leukemia virus 1 infection;>>Epstein-Barr virus infection;>>Human immunodeficiency virus 1 infection;>>PD-L1 expression and PD-1 checkpoint pathway in cancer;>>Primary immunodeficiency
Gene Name :	CD3E
Protein Name :	T-cell surface glycoprotein CD3 epsilon chain
Human Gene Id :	916
Human Swiss Prot No :	P07766
Mouse Swiss Prot No :	P22646
Immunogen :	The antiserum was produced against synthesized peptide derived from human CD3-epsilon. AA range:22-71
Specificity :	CD3-ε Polyclonal Antibody detects endogenous levels of CD3-ε protein.
Formulation :	Liquid in PBS containing 50% glycerol, 0.5% BSA and 0.02% sodium azide.
Source :	Polyclonal, Rabbit,IgG
Dilution :	WB 1:500 - 1:2000. IHC 1:100 - 1:300. ELISA: 1:5000.. IF 1:50-200
Purification :	The antibody was affinity-purified from rabbit antiserum by affinity-chromatography using epitope-specific immunogen.

Concentration :	1 mg/ml
Storage Stability :	-15°C to -25°C/1 year(Do not lower than -25°C)
Observed Band :	21kD
Cell Pathway :	Hematopoietic cell lineage;T_Cell_Receptor;Primary immunodeficiency;
Background :	<p>The protein encoded by this gene is the CD3-epsilon polypeptide, which together with CD3-gamma, -delta and -zeta, and the T-cell receptor alpha/beta and gamma/delta heterodimers, forms the T-cell receptor-CD3 complex. This complex plays an important role in coupling antigen recognition to several intracellular signal-transduction pathways. The genes encoding the epsilon, gamma and delta polypeptides are located in the same cluster on chromosome 11. The epsilon polypeptide plays an essential role in T-cell development. Defects in this gene cause immunodeficiency. This gene has also been linked to a susceptibility to type I diabetes in women. [provided by RefSeq, Jul 2008],</p>
Function :	<p>function:The CD3 complex mediates signal transduction.,online information:CD3E mutation db,similarity:Contains 1 Ig-like (immunoglobulin-like) domain.,similarity:Contains 1 ITAM domain.,subunit:The TCR/CD3 complex of T-lymphocytes consists of either a TCR alpha/beta or TCR gamma/delta heterodimer coexpressed at the cell surface with the invariant subunits of CD3 labeled gamma, delta, epsilon, zeta, and eta.,</p>
Subcellular Location :	Cell membrane ; Single-pass type I membrane protein .
Expression :	Blood,T-cell,
Tag :	orthogonal
Sort :	92
No4 :	1
Host :	Rabbit
Modifications :	Unmodified

[Products Images](#)



Immunohistochemistry analysis of CD3-ε antibody in paraffin-embedded human brain tissue.



Western blot analysis of lysate from K562 cells, using CD3-ε antibody.