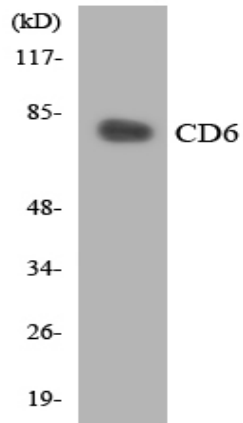


CD6 Polyclonal Antibody

Catalog No :	YT0771
Reactivity :	Human;Mouse
Applications :	WB;ELISA
Target :	CD6
Fields :	>>Cell adhesion molecules
Gene Name :	CD6
Protein Name :	T-cell differentiation antigen CD6
Human Gene Id :	923
Human Swiss Prot No :	P30203
Mouse Swiss Prot No :	Q61003
Immunogen :	The antiserum was produced against synthesized peptide derived from human CD6. AA range:250-299
Specificity :	CD6 Polyclonal Antibody detects endogenous levels of CD6 protein.
Formulation :	Liquid in PBS containing 50% glycerol, 0.5% BSA and 0.02% sodium azide.
Source :	Polyclonal, Rabbit,IgG
Dilution :	WB 1:500 - 1:2000. ELISA: 1:40000. Not yet tested in other applications.
Purification :	The antibody was affinity-purified from rabbit antiserum by affinity-chromatography using epitope-specific immunogen.
Concentration :	1 mg/ml
Storage Stability :	-15°C to -25°C/1 year(Do not lower than -25°C)

Observed Band :	73kD
Cell Pathway :	Cell adhesion molecules (CAMs);
Background :	This gene encodes a protein found on the outer membrane of T-lymphocytes as well as some other immune cells. The encoded protein contains three scavenger receptor cysteine-rich (SRCR) domains and a binding site for an activated leukocyte cell adhesion molecule. The gene product is important for continuation of T cell activation. This gene may be associated with susceptibility to multiple sclerosis (PMID: 19525953, 21849685). Multiple transcript variants encoding different isoforms have been found for this gene. [provided by RefSeq, Dec 2011],
Function :	function:Involved in cell adhesion. Binds to CD166.,PTM:After T-cell activation, becomes hyperphosphorylated on Ser and Thr residues and phosphorylated on Tyr residues.,PTM:Contains intrachain disulfide bond(s).,similarity:Contains 3 SRCR domains.,tissue specificity:Expressed by thymocytes, mature T-cells, a subset of B-cells known as B-1 cells, and by some cells in the brain.,
Subcellular Location :	Cell membrane ; Single-pass type I membrane protein . Detected at the immunological synapse, i.e, at the contact zone between antigen-presenting dendritic cells and T-cells (PubMed:15294938, PubMed:16352806). Colocalizes with the TCR/CD3 complex at the immunological synapse (PubMed:15294938). . ; [Soluble CD6]: Secreted . The origins of the secreted form are not clear, but it might be created by proteolytic shedding of the ectodomain. .
Expression :	Detected on thymocytes (PubMed:15294938). Detected on peripheral blood T-cells (PubMed:15048703, PubMed:16352806). Detected on natural killer (NK) cells (PubMed:16352806). Soluble CD6 is detected in blood serum (at protein level) (PubMed:17601777). Detected in spleen, thymus, appendix, lymph node and peripheral blood leukocytes (PubMed:9013954). Expressed by thymocytes, mature T-cells, a subset of B-cells known as B-1 cells, and by some cells in the brain.
Sort :	3626
No4 :	1
Host :	Rabbit
Modifications :	Unmodified

Products Images



Western blot analysis of the lysates from HT-29 cells using CD6 antibody.