

**CD83 Polyclonal Antibody**

<b>Catalog No :</b>	YT0779
<b>Reactivity :</b>	Human;Mouse
<b>Applications :</b>	WB;IHC;IF;ELISA
<b>Target :</b>	CD83
<b>Gene Name :</b>	CD83
<b>Protein Name :</b>	CD83 antigen
<b>Human Gene Id :</b>	9308
<b>Human Swiss Prot No :</b>	Q01151
<b>Mouse Swiss Prot No :</b>	O88324
<b>Immunogen :</b>	The antiserum was produced against synthesized peptide derived from human CD83. AA range:101-150
<b>Specificity :</b>	CD83 Polyclonal Antibody detects endogenous levels of CD83 protein.
<b>Formulation :</b>	Liquid in PBS containing 50% glycerol, 0.5% BSA and 0.02% sodium azide.
<b>Source :</b>	Polyclonal, Rabbit,IgG
<b>Dilution :</b>	WB 1:500 - 1:2000. IHC 1:100 - 1:300. ELISA: 1:10000.. IF 1:50-200
<b>Purification :</b>	The antibody was affinity-purified from rabbit antiserum by affinity-chromatography using epitope-specific immunogen.
<b>Concentration :</b>	1 mg/ml
<b>Storage Stability :</b>	-15°C to -25°C/1 year(Do not lower than -25°C)
<b>Observed Band :</b>	23kD

**Background :** The protein encoded by this gene is a single-pass type I membrane protein and member of the immunoglobulin superfamily of receptors. The encoded protein may be involved in the regulation of antigen presentation. A soluble form of this protein can bind to dendritic cells and inhibit their maturation. Three transcript variants encoding different isoforms have been found for this gene. [provided by RefSeq, Oct 2011],

**Function :** function:May play a significant role in antigen presentation or the cellular interactions that follow lymphocyte activation.,online information:CD83 antigen,similarity:Contains 1 Ig-like V-type (immunoglobulin-like) domain.,subunit:Monomer.,tissue specificity:Expressed by activated lymphocytes, Langerhans cells and interdigitating reticulum cells.,

**Subcellular Location :** Membrane; Single-pass type I membrane protein.

**Expression :** Expressed by activated lymphocytes, Langerhans cells and interdigitating reticulum cells.

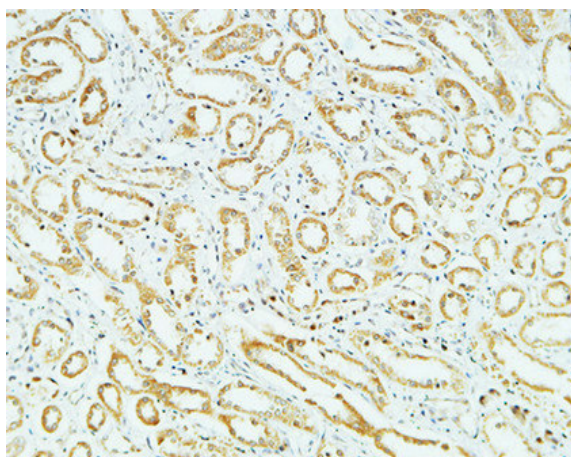
**Sort :** 3683

**No4 :** 1

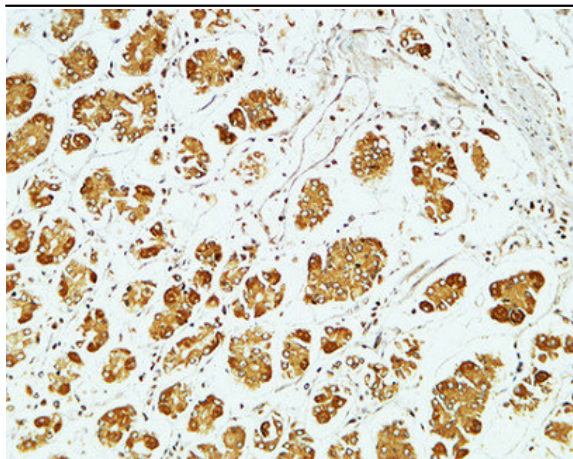
**Host :** Rabbit

**Modifications :** Unmodified

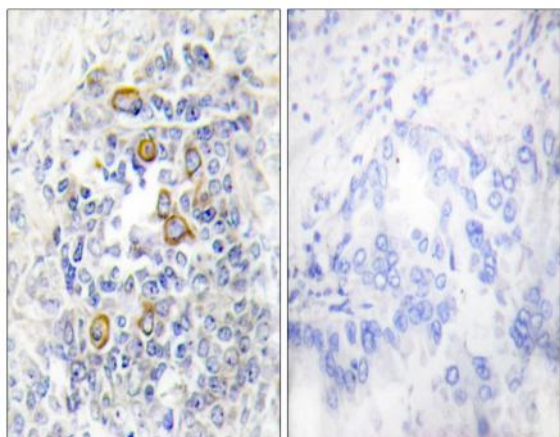
## Products Images



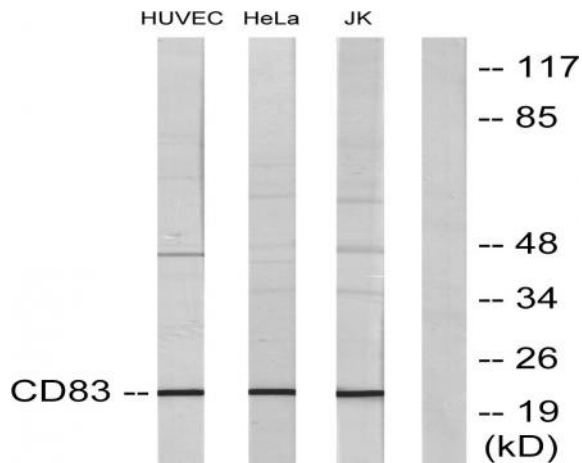
Immunohistochemical analysis of paraffin-embedded Human kidney. 1, Antibody was diluted at 1:400(4° overnight). 2, High-pressure and temperature EDTA, pH8.0 was used for antigen retrieval. 3,Secondary antibody was diluted at 1:200(room temperature, 30min).



Immunohistochemical analysis of paraffin-embedded Human stomach. 1, Antibody was diluted at 1:400(4° overnight). 2, High-pressure and temperature EDTA, pH8.0 was used for antigen retrieval. 3,Secondary antibody was diluted at 1:200(room temperature, 30min).



Immunohistochemistry analysis of paraffin-embedded human lung carcinoma, using CD83 Antibody. The picture on the right is blocked with the synthesized peptide.



Western blot analysis of lysates from HepG2 cells, HUVEC cells, HeLa cells, and Jurkat cells, using CD83 Antibody. The lane on the right is blocked with the synthesized peptide.