

Cdx2 Polyclonal Antibody

Catalog No :	YT0846
Reactivity :	Human;Mouse;Rat
Applications :	WB;ELISA
Target :	CDX2
Fields :	>>Gastric cancer
Gene Name :	CDX2
Protein Name :	Homeobox protein CDX-2
Human Gene Id :	1045
Human Swiss Prot No :	Q99626
Mouse Gene Id :	12591
Mouse Swiss Prot No :	P43241
Immunogen :	The antiserum was produced against synthesized peptide derived from human CDX2. AA range:249-298
Specificity :	Cdx2 Polyclonal Antibody detects endogenous levels of Cdx2 protein.
Formulation :	Liquid in PBS containing 50% glycerol, 0.5% BSA and 0.02% sodium azide.
Source :	Polyclonal, Rabbit,IgG
Dilution :	WB 1:500 - 1:2000. ELISA: 1:5000. Not yet tested in other applications.
Purification :	The antibody was affinity-purified from rabbit antiserum by affinity-chromatography using epitope-specific immunogen.
Concentration :	1 mg/ml

Storage Stability : -15°C to -25°C/1 year(Do not lower than -25°C)

Observed Band : 45kD

Background : This gene is a member of the caudal-related homeobox transcription factor gene family. The encoded protein is a major regulator of intestine-specific genes involved in cell growth and differentiation. This protein also plays a role in early embryonic development of the intestinal tract. Aberrant expression of this gene is associated with intestinal inflammation and tumorigenesis. [provided by RefSeq, Jan 2012],

Function : function:Involved in the transcriptional regulation of multiple genes expressed in the intestinal epithelium. Important in broad range of functions from early differentiation to maintenance of the intestinal epithelial lining of both the small and large intestine.,PTM:Phosphorylation of Ser-60 mediates the transactivation capacity.,similarity:Belongs to the Caudal homeobox family.,similarity:Contains 1 homeobox DNA-binding domain.,

Subcellular Location : Nucleus .

Expression : Detected in small intestine, colon and pancreas.

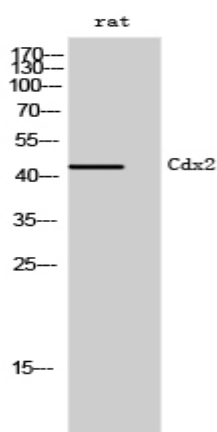
Sort : 3824

No4 : 1

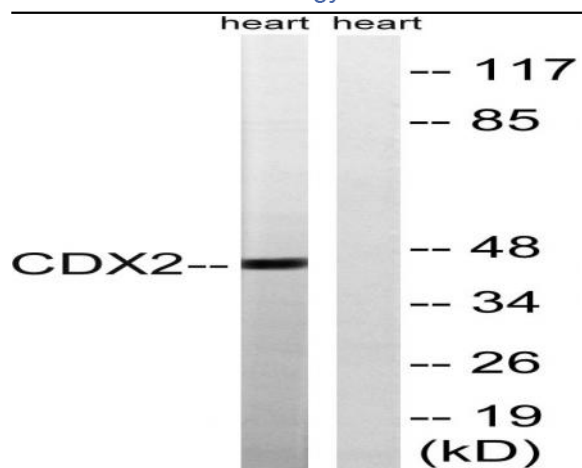
Host : Rabbit

Modifications : Unmodified

Products Images



Western Blot analysis of rat cells using Cdx2 Polyclonal Antibody cells nucleus extracted by Minute TM Cytoplasmic and Nuclear Fractionation kit (SC-003, Inventbiotech, MN, USA).



Western blot analysis of lysates from rat heart, using CDX2 Antibody. The lane on the right is blocked with the synthesized peptide.