

## cGKII Polyclonal Antibody

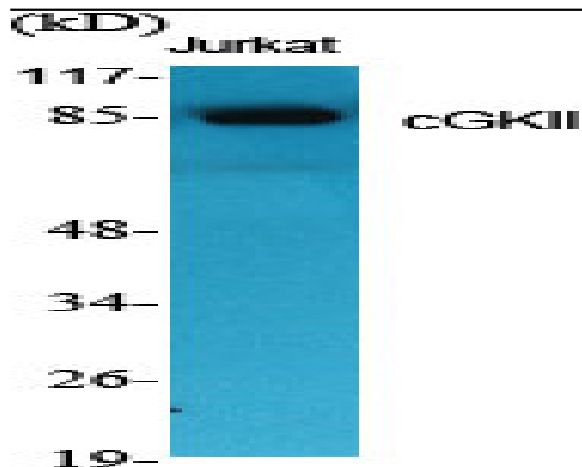
<b>Catalog No :</b>	YT0892
<b>Reactivity :</b>	Human;Mouse;Rat
<b>Applications :</b>	WB;IHC;IF;ELISA
<b>Target :</b>	cGKII
<b>Fields :</b>	>>cGMP-PKG signaling pathway;>>Gap junction;>>Platelet activation;>>Circadian entrainment;>>Thermogenesis;>>Long-term depression;>>Olfactory transduction;>>Regulation of lipolysis in adipocytes;>>Renin secretion;>>Salivary secretion
<b>Gene Name :</b>	PRKG2
<b>Protein Name :</b>	cGMP-dependent protein kinase 2
<b>Human Gene Id :</b>	5593
<b>Human Swiss Prot No :</b>	Q13237
<b>Mouse Swiss Prot No :</b>	Q61410
<b>Rat Gene Id :</b>	25523
<b>Rat Swiss Prot No :</b>	Q64595
<b>Immunogen :</b>	The antiserum was produced against synthesized peptide derived from human CGK 2. AA range:391-440
<b>Specificity :</b>	cGKII Polyclonal Antibody detects endogenous levels of cGKII protein.
<b>Formulation :</b>	Liquid in PBS containing 50% glycerol, 0.5% BSA and 0.02% sodium azide.
<b>Source :</b>	Polyclonal, Rabbit,IgG
<b>Dilution :</b>	WB 1:500 - 1:2000. IHC 1:100 - 1:300. ELISA: 1:20000.. IF 1:50-200

---

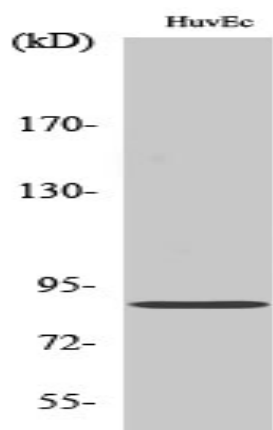
<b>Purification :</b>	The antibody was affinity-purified from rabbit antiserum by affinity-chromatography using epitope-specific immunogen.
<b>Concentration :</b>	1 mg/ml
<b>Storage Stability :</b>	-15°C to -25°C/1 year(Do not lower than -25°C)
<b>Observed Band :</b>	87kD
<b>Cell Pathway :</b>	Gap junction;Long-term depression;Olfactory transduction;
<b>Background :</b>	This gene encodes a protein that belongs to the serine/threonine protein kinase family of proteins. The encoded protein plays a role in the regulation of fluid balance in the intestine. A similar protein in mouse is thought to regulate differentiation and proliferation of cells in the colon. Alternate splicing results in multiple transcript variants. [provided by RefSeq, Sep 2013],
<b>Function :</b>	catalytic activity:ATP + a protein = ADP + a phosphoprotein.,enzyme regulation:Binding of cGMP results in enzyme activation.,similarity:Belongs to the protein kinase superfamily. AGC Ser/Thr protein kinase family. cGMP subfamily.,similarity:Contains 1 AGC-kinase C-terminal domain.,similarity:Contains 1 protein kinase domain.,similarity:Contains 2 cyclic nucleotide-binding domains.,tissue specificity:Highly concentrated in brain, lung and intestinal mucosa.,
<b>Subcellular Location :</b>	Apical cell membrane ; Lipid-anchor .
<b>Expression :</b>	Highly concentrated in brain, lung and intestinal mucosa.
<b>Sort :</b>	3916
<b>No4 :</b>	1
<b>Host :</b>	Rabbit
<b>Modifications :</b>	Unmodified

---

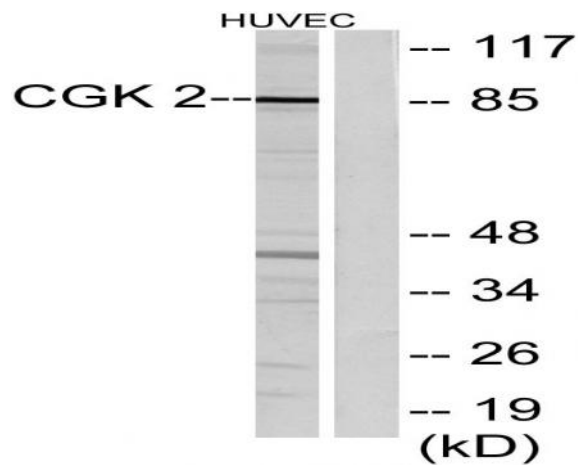
## Products Images



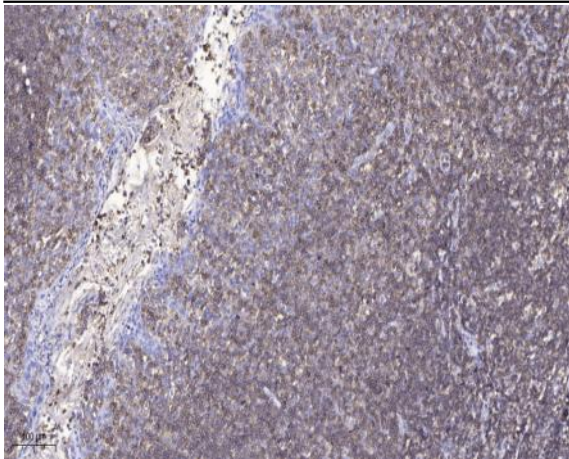
Western Blot analysis of various cells using cGKII Polyclonal Antibody



Western Blot analysis of HuvEc cells using cGKII Polyclonal Antibody



Western blot analysis of lysates from HUVEC cells, using CGK 2 Antibody. The lane on the right is blocked with the synthesized peptide.



Immunohistochemical analysis of paraffin-embedded human tonsil. 1, Antibody was diluted at 1:200(4 ° overnight). 2, Tris-EDTA,pH9.0 was used for antigen retrieval. 3,Secondary antibody was diluted at 1:200(room temperature, 45min).