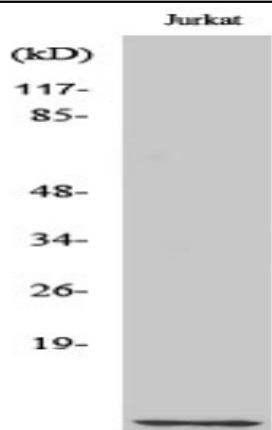


Cks1 Polyclonal Antibody

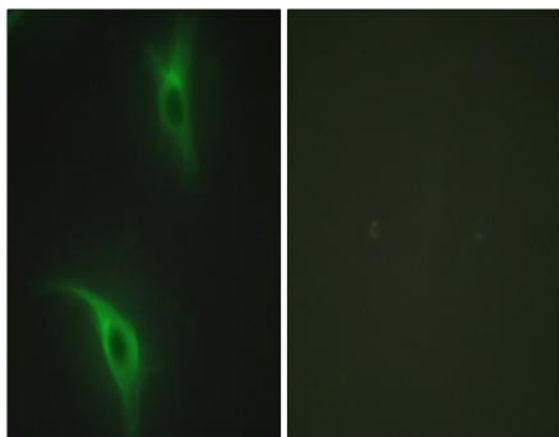
Catalog No :	YT0939
Reactivity :	Human;Mouse
Applications :	WB;IF;ELISA
Target :	Cks1
Fields :	>>Pathways in cancer;>>Small cell lung cancer
Gene Name :	CKS1B
Protein Name :	Cyclin-dependent kinases regulatory subunit 1
Human Gene Id :	1163
Human Swiss Prot No :	P61024
Mouse Gene Id :	54124
Mouse Swiss Prot No :	P61025
Immunogen :	The antiserum was produced against synthesized peptide derived from human CKS1. AA range:10-59
Specificity :	Cks1 Polyclonal Antibody detects endogenous levels of Cks1 protein.
Formulation :	Liquid in PBS containing 50% glycerol, 0.5% BSA and 0.02% sodium azide.
Source :	Polyclonal, Rabbit,IgG
Dilution :	WB 1:500 - 1:2000. IF 1:200 - 1:1000. ELISA: 1:20000. Not yet tested in other applications.
Purification :	The antibody was affinity-purified from rabbit antiserum by affinity-chromatography using epitope-specific immunogen.
Concentration :	1 mg/ml

Storage Stability :	-15°C to -25°C/1 year(Do not lower than -25°C)
Observed Band :	9kD
Cell Pathway :	Pathways in cancer;Small cell lung cancer;
Background :	CKS1B protein binds to the catalytic subunit of the cyclin dependent kinases and is essential for their biological function. The CKS1B mRNA is found to be expressed in different patterns through the cell cycle in HeLa cells, which reflects a specialized role for the encoded protein. At least two transcript variants have been identified for this gene, and it appears that only one of them encodes a protein. [provided by RefSeq, Sep 2008],
Function :	function:Binds to the catalytic subunit of the cyclin dependent kinases and is essential for their biological function.,similarity:Belongs to the CKS family.,subunit:Forms a homo-hexamer that can probably bind six kinase subunits.,
Subcellular Location :	cyclin-dependent protein kinase holoenzyme complex,nucleoplasm,SCF ubiquitin ligase complex,
Expression :	Brain,Muscle,Promyelocytic leukemia,Prostate,Tongue,
Tag :	orthogonal
Sort :	4073
No4 :	1
Host :	Rabbit
Modifications :	Unmodified

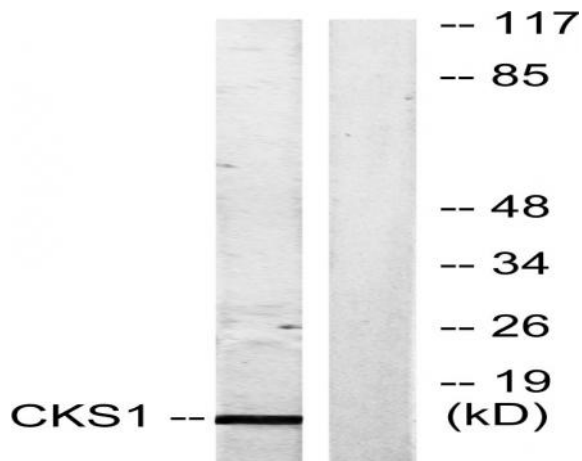
Products Images



Western Blot analysis of various cells using Cks1 Polyclonal Antibody cells nucleus extracted by Minute TM Cytoplasmic and Nuclear Fractionation kit (SC-003, Inventbiotech, MN, USA).



Immunofluorescence analysis of HeLa cells, using CKS1 Antibody. The picture on the right is blocked with the synthesized peptide.



Western blot analysis of lysates from Jurkat cells, treated with serum 20% 15', using CKS1 Antibody. The lane on the right is blocked with the synthesized peptide.