

**CLC-KA Polyclonal Antibody**

<b>Catalog No :</b>	YT0963
<b>Reactivity :</b>	Human;Rat;Mouse;
<b>Applications :</b>	WB;ELISA
<b>Target :</b>	CLC-KA
<b>Gene Name :</b>	CLCNKA
<b>Protein Name :</b>	Chloride channel protein CLC-Ka
<b>Human Gene Id :</b>	1187
<b>Human Swiss Prot No :</b>	P51800
<b>Mouse Swiss Prot No :</b>	Q9WUB7
<b>Immunogen :</b>	The antiserum was produced against synthesized peptide derived from human CLCNKA. AA range:581-630
<b>Specificity :</b>	CLC-KA Polyclonal Antibody detects endogenous levels of CLC-KA protein.
<b>Formulation :</b>	Liquid in PBS containing 50% glycerol, 0.5% BSA and 0.02% sodium azide.
<b>Source :</b>	Polyclonal, Rabbit,IgG
<b>Dilution :</b>	WB 1:500 - 1:2000. ELISA: 1:40000. Not yet tested in other applications.
<b>Purification :</b>	The antibody was affinity-purified from rabbit antiserum by affinity-chromatography using epitope-specific immunogen.
<b>Concentration :</b>	1 mg/ml
<b>Storage Stability :</b>	-15°C to -25°C/1 year(Do not lower than -25°C)
<b>Observed Band :</b>	75kD

**Background :** This gene is a member of the CLC family of voltage-gated chloride channels. The encoded protein is predicted to have 12 transmembrane domains, and requires a beta subunit called barttin to form a functional channel. It is thought to function in salt reabsorption in the kidney and potassium recycling in the inner ear. The gene is highly similar to CLCNKB, which is located 10 kb downstream from this gene. Multiple transcript variants encoding different isoforms have been found for this gene. [provided by RefSeq, Jul 2008],

**Function :** function:Voltage-gated chloride channel. Chloride channels have several functions including the regulation of cell volume; membrane potential stabilization, signal transduction and transepithelial transport. May be important in urinary concentrating mechanisms.,similarity:Belongs to the chloride channel (TC 2.A.49) family.,similarity:Contains 2 CBS domains.,subunit:Interacts with BSND. Forms heteromers with BSND in the thin ascending limb of Henle.,tissue specificity:Expressed predominantly in the kidney. All nephron segments expressing BSND also express CLCNK proteins.,

**Subcellular Location :** Membrane; Multi-pass membrane protein.

**Expression :** Expressed predominantly in the kidney. All nephron segments expressing BSND also express CLCNK proteins.

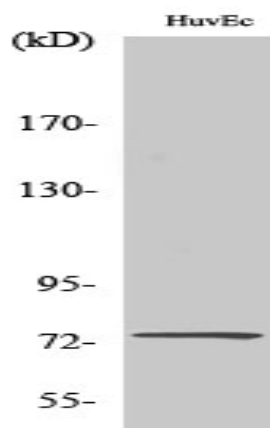
**Sort :** 4130

**No4 :** 1

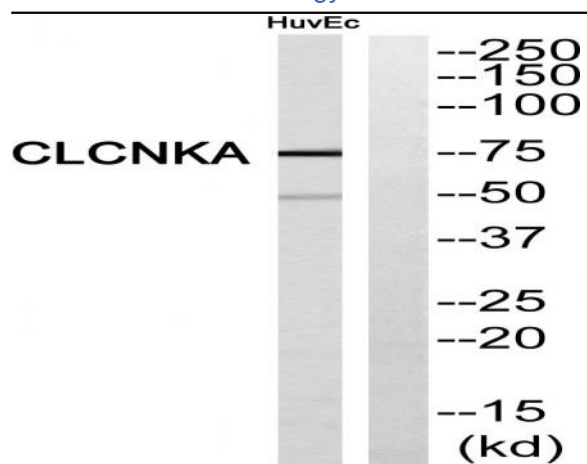
**Host :** Rabbit

**Modifications :** Unmodified

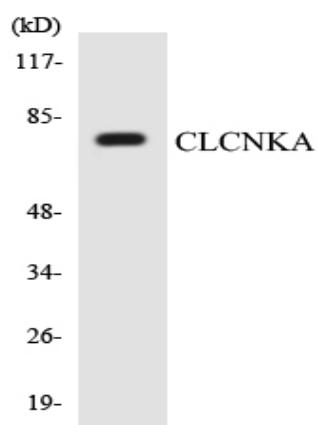
## Products Images



Western Blot analysis of various cells using CLC-KA Polyclonal Antibody



Western blot analysis of CLCNKA Antibody. The lane on the right is blocked with the CLCNKA peptide.



Western blot analysis of the lysates from HepG2 cells using CLCNKA antibody.