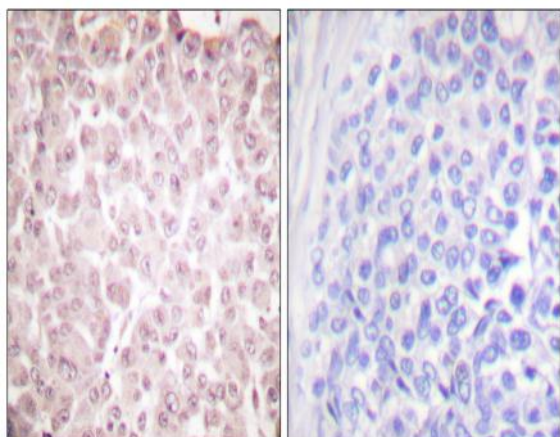


CLLD7 Polyclonal Antibody

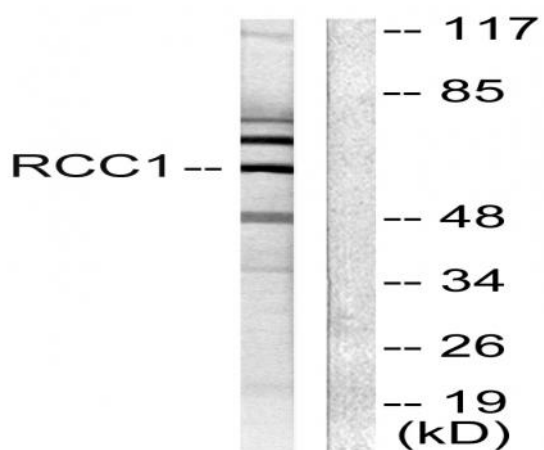
Catalog No :	YT0974
Reactivity :	Human;Mouse
Applications :	WB;IHC;IF;ELISA
Target :	CLLD7
Gene Name :	RCBTB1
Protein Name :	RCC1 and BTB domain-containing protein 1
Human Gene Id :	55213
Human Swiss Prot No :	Q8NDN9
Mouse Gene Id :	71330
Mouse Swiss Prot No :	Q6NXM2
Immunogen :	The antiserum was produced against synthesized peptide derived from human RCBTB1. AA range:251-300
Specificity :	CLLD7 Polyclonal Antibody detects endogenous levels of CLLD7 protein.
Formulation :	Liquid in PBS containing 50% glycerol, 0.5% BSA and 0.02% sodium azide.
Source :	Polyclonal, Rabbit,IgG
Dilution :	WB 1:500 - 1:2000. IHC 1:100 - 1:300. ELISA: 1:20000.. IF 1:50-200
Purification :	The antibody was affinity-purified from rabbit antiserum by affinity-chromatography using epitope-specific immunogen.
Concentration :	1 mg/ml
Storage Stability :	-15°C to -25°C/1 year(Do not lower than -25°C)

Observed Band :	58kD
Background :	This gene encodes a protein with an N-terminal RCC1 domain and a C-terminal BTB (broad complex, tramtrack and bric-a-brac) domain. In rat, over-expression of this gene in vascular smooth muscle cells induced cellular hypertrophy. In rat, the C-terminus of RCBTB1 interacts with the angiotensin II receptor-1A. In humans, this gene maps to a region of chromosome 13q that is frequently deleted in B-cell chronic lymphocytic leukemia and other lymphoid malignancies. [provided by RefSeq, Jul 2008],
Function :	function:May be involved in cell cycle regulation by chromatin remodeling.,similarity:Contains 1 BTB (POZ) domain.,similarity:Contains 2 BTB (POZ) domains.,similarity:Contains 6 RCC1 repeats.,tissue specificity:Ubiquitously expressed.,
Subcellular Location :	Nucleus .
Expression :	Ubiquitously expressed (PubMed:11306461, PubMed:27486781). In the retina, present in the nerve fiber layer and to a lesser extent in the inner and outer plexiform layers (at protein level) (PubMed:27486781).
Tag :	orthogonal
Sort :	4290
No4 :	1
Host :	Rabbit
Modifications :	Unmodified

Products Images



Immunohistochemistry analysis of paraffin-embedded human breast carcinoma tissue, using RCC1 Antibody. The picture on the right is blocked with the synthesized peptide.



Western blot analysis of lysates from LOVO cells, using RCC1 Antibody. The lane on the right is blocked with the synthesized peptide.