

CNT2 Polyclonal Antibody

Catalog No :	YT1004
Reactivity :	Human;Mouse;Rat
Applications :	WB;IHC;IF;ELISA
Target :	CNT2
Gene Name :	SLC28A2
Protein Name :	Sodium/nucleoside cotransporter 2
Human Gene Id :	9153
Human Swiss Prot No :	O43868
Mouse Swiss Prot No :	O88627
Rat Gene Id :	60423
Rat Swiss Prot No :	Q62773
Immunogen :	The antiserum was produced against synthesized peptide derived from human SLC28A2. AA range:371-420
Specificity :	CNT2 Polyclonal Antibody detects endogenous levels of CNT2 protein.
Formulation :	Liquid in PBS containing 50% glycerol, 0.5% BSA and 0.02% sodium azide.
Source :	Polyclonal, Rabbit,IgG
Dilution :	WB 1:500 - 1:2000. IHC 1:100 - 1:300. ELISA: 1:10000.. IF 1:50-200
Purification :	The antibody was affinity-purified from rabbit antiserum by affinity-chromatography using epitope-specific immunogen.
Concentration :	1 mg/ml

Storage Stability : -15°C to -25°C/1 year (Do not lower than -25°C)

Observed Band : 65kD

Background : enzyme regulation: Inhibited by formycin B., function: Sodium-dependent and purine-selective transporter. Exhibits the transport characteristics of the nucleoside transport system cif or N1 subtype (N1/cif) (selective for purine nucleosides and uridine). Plays a critical role in specific uptake and salvage of purine nucleosides in kidney and other tissues., similarity: Belongs to the concentrative nucleoside transporter (CNT) (TC 2.A.41) family., tissue specificity: Expressed in heart and skeletal muscle followed by liver, kidney, intestine, pancreas, placenta and brain. Weak expression in lung.,

Function : enzyme regulation: Inhibited by formycin B., function: Sodium-dependent and purine-selective transporter. Exhibits the transport characteristics of the nucleoside transport system cif or N1 subtype (N1/cif) (selective for purine nucleosides and uridine). Plays a critical role in specific uptake and salvage of purine nucleosides in kidney and other tissues., similarity: Belongs to the concentrative nucleoside transporter (CNT) (TC 2.A.41) family., tissue specificity: Expressed in heart and skeletal muscle followed by liver, kidney, intestine, pancreas, placenta and brain. Weak expression in lung.,

Subcellular Location : Membrane ; Multi-pass membrane protein .

Expression : Expressed in heart and skeletal muscle followed by liver, kidney, intestine, pancreas, placenta and brain (PubMed:9435697). Weak expression in lung (PubMed:9435697).

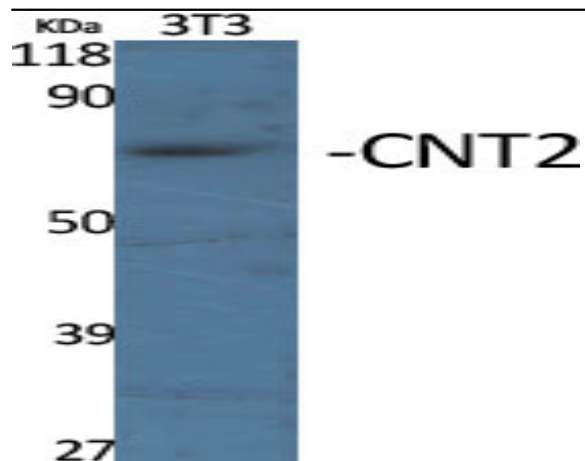
Sort : 4354

No4 : 1

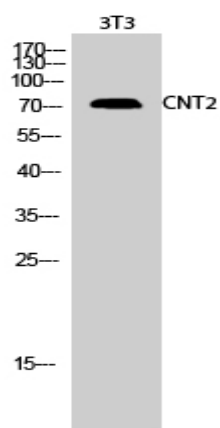
Host : Rabbit

Modifications : Unmodified

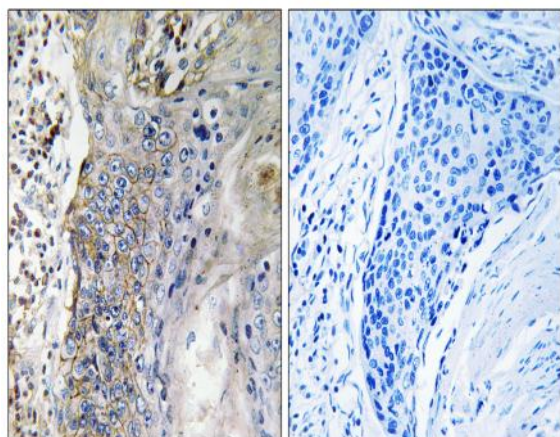
Products Images



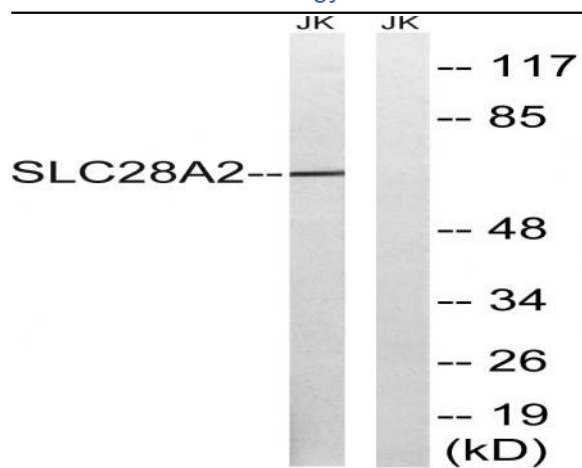
Western Blot analysis of various cells using CNT2 Polyclonal Antibody



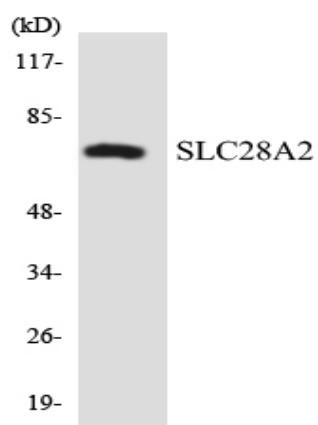
Western Blot analysis of 3T3 cells using CNT2 Polyclonal Antibody



Immunohistochemistry analysis of paraffin-embedded human lung carcinoma tissue, using SLC28A2 Antibody. The picture on the right is blocked with the synthesized peptide.



Western blot analysis of lysates from Jurkat cells, using SLC28A2 Antibody. The lane on the right is blocked with the synthesized peptide.



Western blot analysis of the lysates from HepG2 cells using SLC28A2 antibody.