

**COL14A1 Polyclonal Antibody**

<b>Catalog No :</b>	YT1012
<b>Reactivity :</b>	Human;Mouse
<b>Applications :</b>	IHC;IF;ELISA
<b>Target :</b>	COL14A1
<b>Fields :</b>	>>Protein digestion and absorption
<b>Gene Name :</b>	COL14A1
<b>Protein Name :</b>	Collagen alpha-1(XIV) chain
<b>Human Gene Id :</b>	7373
<b>Human Swiss Prot No :</b>	Q05707
<b>Mouse Swiss Prot No :</b>	Q80X19
<b>Immunogen :</b>	The antiserum was produced against synthesized peptide derived from human N-terminal Collagen XIV alpha1. AA range:71-120
<b>Specificity :</b>	COL14A1 Polyclonal Antibody detects endogenous levels of COL14A1 protein.
<b>Formulation :</b>	Liquid in PBS containing 50% glycerol, 0.5% BSA and 0.02% sodium azide.
<b>Source :</b>	Polyclonal, Rabbit,IgG
<b>Dilution :</b>	IHC 1:100 - 1:300. IF 1:200 - 1:1000. ELISA: 1:40000. Not yet tested in other applications.
<b>Purification :</b>	The antibody was affinity-purified from rabbit antiserum by affinity-chromatography using epitope-specific immunogen.
<b>Concentration :</b>	1 mg/ml
<b>Storage Stability :</b>	-15°C to -25°C/1 year(Do not lower than -25°C)

---

**Molecularweight :** 194kD

---

**Background :** This gene encodes the alpha chain of type XIV collagen, a member of the FACIT (fibril-associated collagens with interrupted triple helices) collagen family. Type XIV collagen interacts with the fibril surface and is involved in the regulation of fibrillogenesis. [provided by RefSeq, Jan 2013],

---

**Function :** function:Plays an adhesive role by integrating collagen bundles. It is probably associated with the surface of interstitial collagen fibrils via COL1. The COL2 domain may then serve as a rigid arm which sticks out from the fibril and protrudes the large N-terminal globular domain into the extracellular space, where it might interact with other matrix molecules or cell surface receptors.,PTM:Lysines at the third position of the tripeptide repeating unit (G-X-Y) are hydroxylated in all cases and bind carbohydrates.,PTM:May contain numerous cysteine residues involved in inter- and intramolecular disulfide bonding.,PTM:Prolines at the third position of the tripeptide repeating unit (G-X-Y) are hydroxylated in some or all of the chains.,similarity:Belongs to the fibril-associated collagens with interrupted helices (FACIT) family.,similarity:Contains 1 TSP N-terminal (TSPN) domain.,similarity:

---

**Subcellular Location :** Secreted, extracellular space, extracellular matrix .

---

**Expression :** Brain,Liver,Muscle,PNS,Testis,

---

**Sort :** 4374

---

**No4 :** 1

---

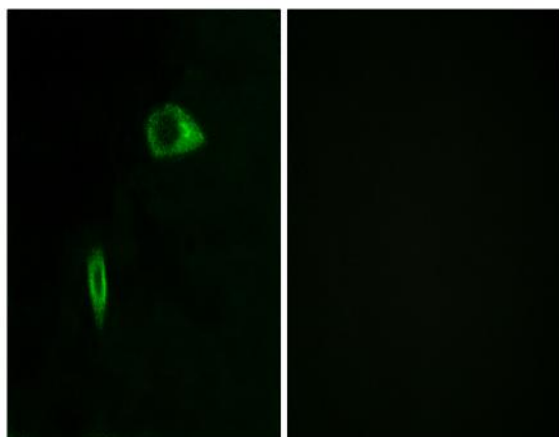
**Host :** Rabbit

---

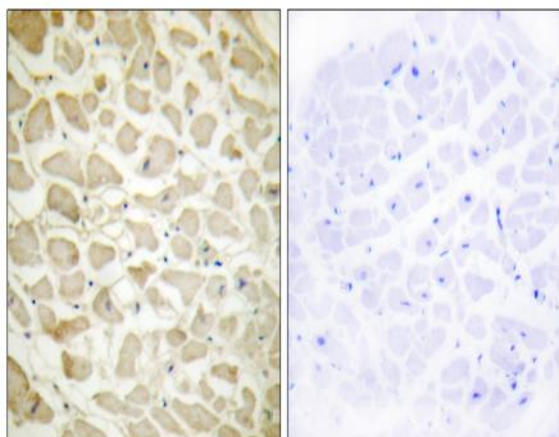
**Modifications :** Unmodified

---

## Products Images



Immunofluorescence analysis of HeLa cells, using Collagen XIV alpha1 Antibody. The picture on the right is blocked with the synthesized peptide.



Immunohistochemistry analysis of paraffin-embedded human heart tissue, using Collagen XIV alpha1 Antibody. The picture on the right is blocked with the synthesized peptide.