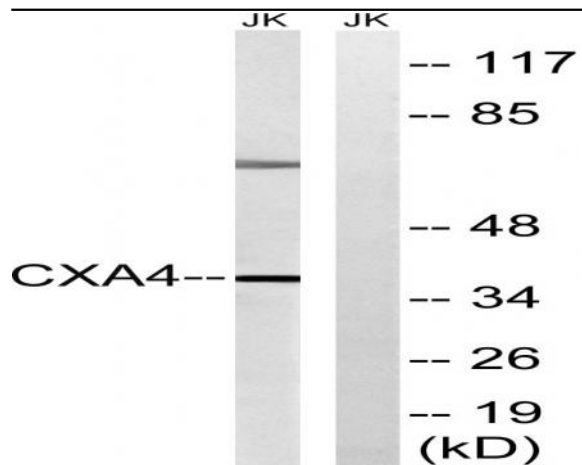


Connexin 37 Polyclonal Antibody

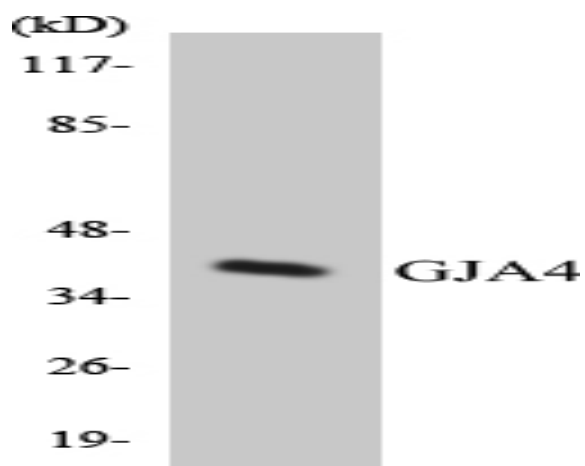
| | |
|------------------------------|---|
| Catalog No : | YT1043 |
| Reactivity : | Human;Mouse;Rat |
| Applications : | WB;ELISA |
| Target : | Connexin 37 |
| Gene Name : | GJA4 |
| Protein Name : | Gap junction alpha-4 protein |
| Human Gene Id : | 2701 |
| Human Swiss Prot No : | P35212 |
| Mouse Gene Id : | 14612 |
| Mouse Swiss Prot No : | P28235 |
| Rat Gene Id : | 25655 |
| Rat Swiss Prot No : | Q03190 |
| Immunogen : | The antiserum was produced against synthesized peptide derived from human GJA4. AA range:81-130 |
| Specificity : | Connexin 37 Polyclonal Antibody detects endogenous levels of Connexin 37 protein. |
| Formulation : | Liquid in PBS containing 50% glycerol, 0.5% BSA and 0.02% sodium azide. |
| Source : | Polyclonal, Rabbit,IgG |
| Dilution : | WB 1:500 - 1:2000. ELISA: 1:40000. Not yet tested in other applications. |
| Purification : | The antibody was affinity-purified from rabbit antiserum by affinity-chromatography using epitope-specific immunogen. |

| | |
|-------------------------------|---|
| Concentration : | 1 mg/ml |
| Storage Stability : | -15°C to -25°C/1 year(Do not lower than -25°C) |
| Observed Band : | 37kD |
| Background : | This gene encodes a member of the connexin gene family. The encoded protein is a component of gap junctions, which are composed of arrays of intercellular channels that provide a route for the diffusion of low molecular weight materials from cell to cell. Mutations in this gene have been associated with atherosclerosis and a higher risk of myocardial infarction. [provided by RefSeq, Jul 2008], |
| Function : | function:One gap junction consists of a cluster of closely packed pairs of transmembrane channels, the connexons, through which materials of low MW diffuse from one cell to a neighboring cell.,similarity:Belongs to the connexin family.,similarity:Belongs to the connexin family. Alpha-type (group II) subfamily.,subunit:A connexon is composed of a hexamer of connexins.,tissue specificity:Expressed in multiple organs and tissues, including heart, uterus, ovary, and blood vessel endothelium., |
| Subcellular Location : | Cell membrane; Multi-pass membrane protein. Cell junction, gap junction. |
| Expression : | Expressed in multiple organs and tissues, including heart, uterus, ovary, and blood vessel endothelium. |
| Sort : | 4415 |
| No4 : | 1 |
| Host : | Rabbit |
| Modifications : | Unmodified |

Products Images



Western blot analysis of lysates from Jurkat cells, using GJA4 Antibody. The lane on the right is blocked with the synthesized peptide.



Western blot analysis of the lysates from 293 cells using GJA4 antibody.