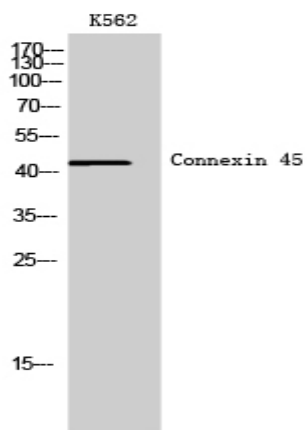


Connexin 45 Polyclonal Antibody

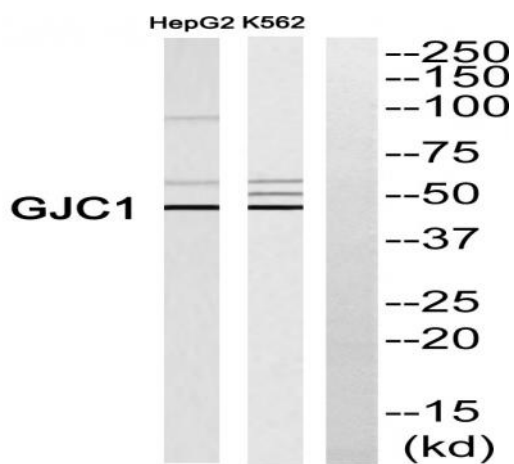
Catalog No :	YT1047
Reactivity :	Human;Mouse;Rat
Applications :	WB;ELISA
Target :	Connexin-45
Gene Name :	GJC1
Protein Name :	Gap junction gamma-1 protein
Human Gene Id :	10052
Human Swiss Prot No :	P36383
Mouse Gene Id :	14615
Mouse Swiss Prot No :	P28229
Rat Gene Id :	266706
Rat Swiss Prot No :	A4GG66
Immunogen :	The antiserum was produced against synthesized peptide derived from human GJC1. AA range:231-280
Specificity :	Connexin 45 Polyclonal Antibody detects endogenous levels of Connexin 45 protein.
Formulation :	Liquid in PBS containing 50% glycerol, 0.5% BSA and 0.02% sodium azide.
Source :	Polyclonal, Rabbit,IgG
Dilution :	WB 1:500 - 1:2000. ELISA: 1:40000. Not yet tested in other applications.
Purification :	The antibody was affinity-purified from rabbit antiserum by affinity-chromatography using epitope-specific immunogen.

Concentration :	1 mg/ml
Storage Stability :	-15°C to -25°C/1 year(Do not lower than -25°C)
Observed Band :	45kD
Background :	This gene is a member of the connexin gene family. The encoded protein is a component of gap junctions, which are composed of arrays of intercellular channels that provide a route for the diffusion of low molecular weight materials from cell to cell. Alternatively spliced transcript variants encoding the same isoform have been described. [provided by RefSeq, Jul 2008],
Function :	function:One gap junction consists of a cluster of closely packed pairs of transmembrane channels, the connexons, through which materials of low MW diffuse from one cell to a neighboring cell.,similarity:Belongs to the connexin family. Gamma-type subfamily.,subunit:A connexon is composed of a hexamer of connexins.,
Subcellular Location :	Cell membrane; Multi-pass membrane protein. Cell junction, gap junction.
Expression :	Testis,Uterus,
Tag :	orthogonal
Sort :	4421
No4 :	1
Host :	Rabbit
Modifications :	Unmodified

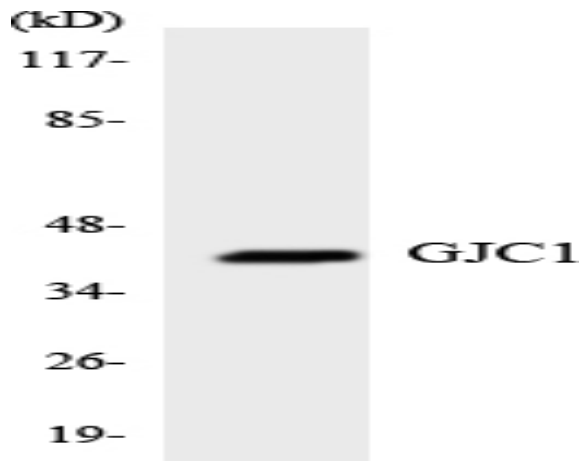
Products Images



Western Blot analysis of K562 cells using Connexin 45 Polyclonal Antibody



Western blot analysis of GJC1 Antibody. The lane on the right is blocked with the GJC1 peptide.



Western blot analysis of the lysates from K562 cells using GJC1 antibody.