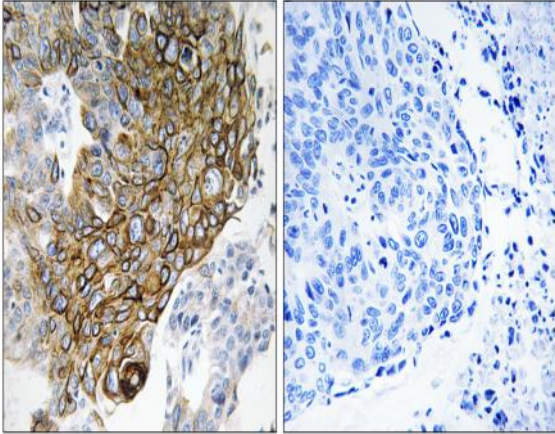


Connexin 46 Polyclonal Antibody

Catalog No :	YT1048
Reactivity :	Human;Mouse;Rat
Applications :	IHC;IF;ELISA
Target :	Connexin 46
Gene Name :	GJA3
Protein Name :	Gap junction alpha-3 protein
Human Gene Id :	2700
Human Swiss Prot No :	Q9Y6H8
Mouse Gene Id :	14611
Mouse Swiss Prot No :	Q64448
Rat Gene Id :	79217
Rat Swiss Prot No :	P29414
Immunogen :	The antiserum was produced against synthesized peptide derived from human GJA3. AA range:151-200
Specificity :	Connexin 46 Polyclonal Antibody detects endogenous levels of Connexin 46 protein.
Formulation :	Liquid in PBS containing 50% glycerol, 0.5% BSA and 0.02% sodium azide.
Source :	Polyclonal, Rabbit,IgG
Dilution :	IHC 1:100-500;IF ICC 1:100-500;ELISA 1:5000-20000
Purification :	The antibody was affinity-purified from rabbit antiserum by affinity-chromatography using epitope-specific immunogen.

Concentration :	1 mg/ml
Storage Stability :	-15°C to -25°C/1 year(Do not lower than -25°C)
Molecularweight :	47kD
Background :	The protein encoded by this gene is a connexin and is a component of lens fiber gap junctions. Defects in this gene are a cause of zonular pulverulent cataract type 3 (CZP3). [provided by RefSeq, Jan 2010],
Function :	disease:Defects in GJA3 are the cause of zonular pulverulent cataract type 3 (CZP3) [MIM:601885]. CZP3 is a form of autosomal dominant congenital cataract.,function:One gap junction consists of a cluster of closely packed pairs of transmembrane channels, the connexons, through which materials of low MW diffuse from one cell to a neighboring cell.,similarity:Belongs to the connexin family. Alpha-type (group II) subfamily.,subunit:A connexon is composed of a hexamer of connexins. This particular connexin is a component of lens fiber gap junctions, can form both junctional and non-junctional ("hemi-") channels.,
Subcellular Location :	Cell membrane ; Multi-pass membrane protein . Cell junction, gap junction .
Expression :	Lens fibers,
Tag :	orthogonal
Sort :	4422
No4 :	1
Host :	Rabbit
Modifications :	Unmodified

Products Images



Immunohistochemistry analysis of paraffin-embedded human lung carcinoma tissue, using GJA3 Antibody. The picture on the right is blocked with the synthesized peptide.