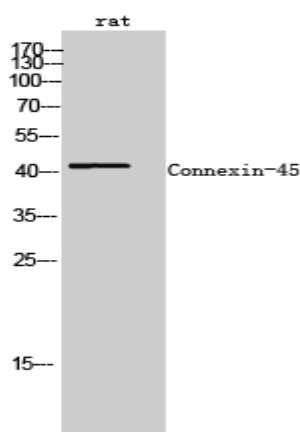


Connexin-45 Polyclonal Antibody

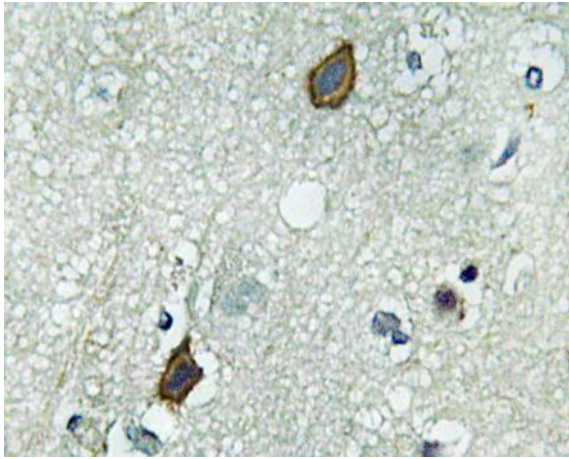
Catalog No :	YT1052
Reactivity :	Human;Mouse;Rat
Applications :	WB;IHC;IF;ELISA
Target :	Connexin-45
Gene Name :	GJC1
Protein Name :	Gap junction gamma-1 protein
Human Gene Id :	10052
Human Swiss Prot No :	P36383
Mouse Gene Id :	14615
Mouse Swiss Prot No :	P28229
Rat Gene Id :	266706
Rat Swiss Prot No :	A4GG66
Immunogen :	The antiserum was produced against synthesized peptide derived from human Connexin-45. AA range:312-361
Specificity :	Connexin-45 Polyclonal Antibody detects endogenous levels of Connexin-45 protein.
Formulation :	Liquid in PBS containing 50% glycerol, 0.5% BSA and 0.02% sodium azide.
Source :	Polyclonal, Rabbit,IgG
Dilution :	WB 1:500 - 1:2000. IHC 1:100 - 1:300. ELISA: 1:40000.. IF 1:50-200
Purification :	The antibody was affinity-purified from rabbit antiserum by affinity-chromatography using epitope-specific immunogen.

Concentration :	1 mg/ml
Storage Stability :	-15°C to -25°C/1 year(Do not lower than -25°C)
Observed Band :	45kD
Background :	This gene is a member of the connexin gene family. The encoded protein is a component of gap junctions, which are composed of arrays of intercellular channels that provide a route for the diffusion of low molecular weight materials from cell to cell. Alternatively spliced transcript variants encoding the same isoform have been described. [provided by RefSeq, Jul 2008],
Function :	function:One gap junction consists of a cluster of closely packed pairs of transmembrane channels, the connexons, through which materials of low MW diffuse from one cell to a neighboring cell.,similarity:Belongs to the connexin family. Gamma-type subfamily.,subunit:A connexon is composed of a hexamer of connexins.,
Subcellular Location :	Cell membrane; Multi-pass membrane protein. Cell junction, gap junction.
Expression :	Testis,Uterus,
Sort :	4429
No4 :	1
Host :	Rabbit
Modifications :	Unmodified

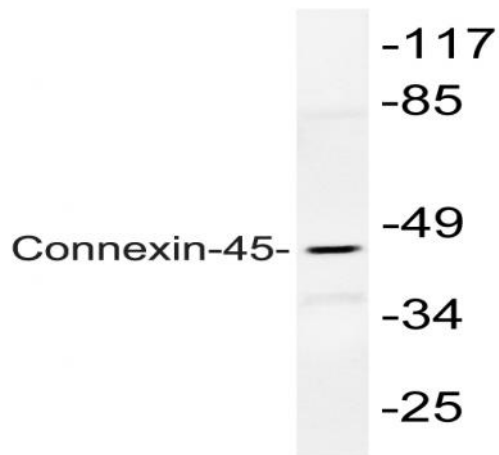
Products Images



Western Blot analysis of rat cells using Connexin-45 Polyclonal Antibody



Immunohistochemistry analysis of Connexin-45 antibody in paraffin-embedded human brain tissue.



Western blot analysis of lysate from rat heart, using Connexin-45 antibody.