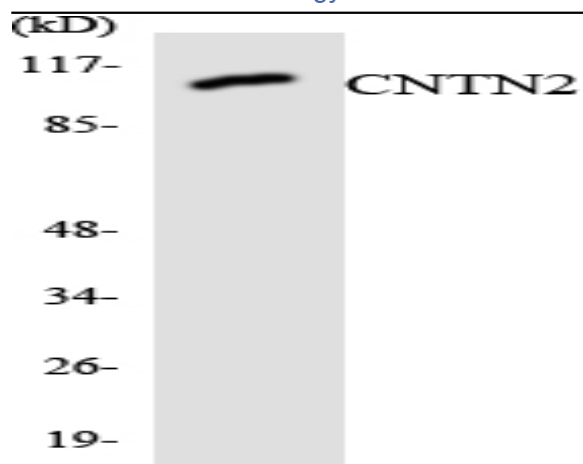


Contactin 2 Polyclonal Antibody

Catalog No :	YT1053
Reactivity :	Human;Mouse;Rat
Applications :	WB;ELISA
Target :	Contactin 2
Fields :	>>Cell adhesion molecules
Gene Name :	CNTN2
Protein Name :	Contactin-2
Human Gene Id :	6900
Human Swiss Prot No :	Q02246
Mouse Gene Id :	21367
Mouse Swiss Prot No :	Q61330
Rat Gene Id :	25356
Rat Swiss Prot No :	P22063
Immunogen :	The antiserum was produced against synthesized peptide derived from human CNTN2. AA range:111-160
Specificity :	Contactin 2 Polyclonal Antibody detects endogenous levels of Contactin 2 protein.
Formulation :	Liquid in PBS containing 50% glycerol, 0.5% BSA and 0.02% sodium azide.
Source :	Polyclonal, Rabbit,IgG
Dilution :	WB 1:500 - 1:2000. ELISA: 1:40000. Not yet tested in other applications.

Purification :	The antibody was affinity-purified from rabbit antiserum by affinity-chromatography using epitope-specific immunogen.
Concentration :	1 mg/ml
Storage Stability :	-15°C to -25°C/1 year(Do not lower than -25°C)
Observed Band :	120kD
Cell Pathway :	Cell adhesion molecules (CAMs);
Background :	This gene encodes a member of the contactin family of proteins, part of the immunoglobulin superfamily of cell adhesion molecules. The encoded glycosylphosphatidylinositol (GPI)-anchored neuronal membrane protein plays a role in the proliferation, migration, and axon guidance of neurons of the developing cerebellum. A mutation in this gene may be associated with adult myoclonic epilepsy. [provided by RefSeq, Sep 2016],
Function :	function:May play a role in the initial growth and guidance of axons. May be involved in cell adhesion.,similarity:Belongs to the immunoglobulin superfamily. Contactin family.,similarity:Contains 4 fibronectin type-III domains.,similarity:Contains 6 Ig-like C2-type (immunoglobulin-like) domains.,subcellular location:Attached to the neuronal membrane by a GPI-anchor and is also released from neurons.,
Subcellular Location :	Cell membrane; Lipid-anchor, GPI-anchor. Attached to the neuronal membrane by a GPI-anchor and is also released from neurons.
Expression :	Amygdala,Brain,Placenta,Plasma,
Sort :	4431
No4 :	1
Host :	Rabbit
Modifications :	Unmodified

Products Images



Western blot analysis of the lysates from HUVEC cells using CNTN2 antibody.