

**COP  $\zeta$ 1 Polyclonal Antibody**

<b>Catalog No :</b>	YT1057
<b>Reactivity :</b>	Human;Mouse;Monkey
<b>Applications :</b>	WB;IHC;IF;ELISA
<b>Target :</b>	COP $\zeta$ 1
<b>Gene Name :</b>	COPZ1
<b>Protein Name :</b>	Coatomer subunit zeta-1
<b>Human Gene Id :</b>	22818
<b>Human Swiss Prot No :</b>	P61923
<b>Mouse Gene Id :</b>	56447
<b>Mouse Swiss Prot No :</b>	P61924
<b>Immunogen :</b>	The antiserum was produced against synthesized peptide derived from human COPZ1. AA range:11-60
<b>Specificity :</b>	COP $\zeta$ 1 Polyclonal Antibody detects endogenous levels of COP $\zeta$ 1 protein.
<b>Formulation :</b>	Liquid in PBS containing 50% glycerol, 0.5% BSA and 0.02% sodium azide.
<b>Source :</b>	Polyclonal, Rabbit,IgG
<b>Dilution :</b>	WB 1:500 - 1:2000. IHC 1:100 - 1:300. ELISA: 1:10000.. IF 1:50-200
<b>Purification :</b>	The antibody was affinity-purified from rabbit antiserum by affinity-chromatography using epitope-specific immunogen.
<b>Concentration :</b>	1 mg/ml
<b>Storage Stability :</b>	-15°C to -25°C/1 year(Do not lower than -25°C)

**Observed Band :** 20kD

---

**Background :** This gene encodes a subunit of the cytoplasmic coatamer protein complex, which is involved in autophagy and intracellular protein trafficking. The coatamer protein complex is comprised of seven subunits and functions as the coat protein of coat protein complex (COP)I-vesicles. Alternative splicing results in multiple transcript variants. [provided by RefSeq, Nov 2012],

---

**Function :** function:The coatamer is a cytosolic protein complex that binds to dilysine motifs and reversibly associates with Golgi non-clathrin-coated vesicles, which further mediate biosynthetic protein transport from the ER, via the Golgi up to the trans Golgi network. Coatamer complex is required for budding from Golgi membranes, and is essential for the retrograde Golgi-to-ER transport of dilysine-tagged proteins. In mammals, the coatamer can only be recruited by membranes associated to ADP-ribosylation factors (ARFs), which are small GTP-binding proteins; the complex also influences the Golgi structural integrity, as well as the processing, activity, and endocytic recycling of LDL receptors.,function:The zeta subunit may be involved in regulating the coat assembly and, hence, the rate of biosynthetic protein transport due to its association-dissociation properties with the coatamer complex.,PT

---

**Subcellular Location :** Cytoplasm . Golgi apparatus membrane ; Peripheral membrane protein ; Cytoplasmic side . Cytoplasmic vesicle, COPI-coated vesicle membrane ; Peripheral membrane protein ; Cytoplasmic side . The coatamer is cytoplasmic or polymerized on the cytoplasmic side of the Golgi, as well as on the vesicles/buds originating from it. .

---

**Expression :** Colon carcinoma,Placenta,Renal proximal tubule,Umbilical cord blood

---

**Sort :** 4435

---

**No4 :** 1

---

**Host :** Rabbit

---

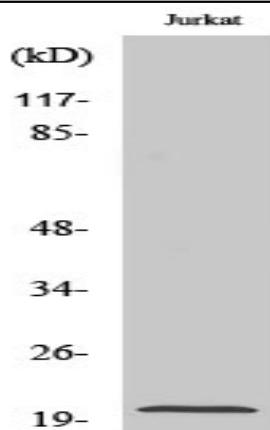
**Modifications :** Unmodified

---

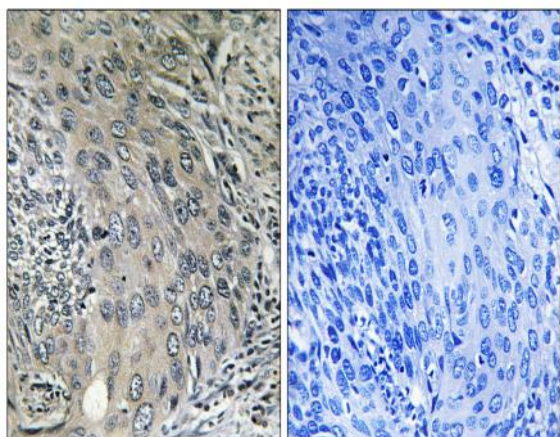
---

**Products Images**

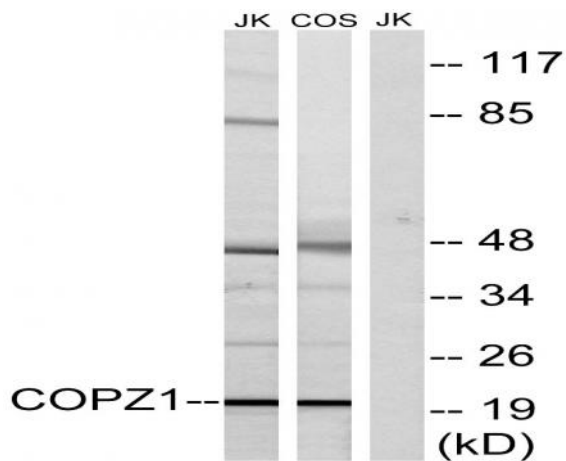
---



Western Blot analysis of various cells using COP ζ1 Polyclonal Antibody diluted at 1:500



Immunohistochemistry analysis of paraffin-embedded human cervix carcinoma tissue, using COPZ1 Antibody. The picture on the right is blocked with the synthesized peptide.



Western blot analysis of lysates from Jurkat and COS cells, using COPZ1 Antibody. The lane on the right is blocked with the synthesized peptide.