

CRBP-III Polyclonal Antibody

Catalog No :	YT1095
Reactivity :	Human
Applications :	IHC;IF;ELISA
Target :	CRBP-III
Gene Name :	RBP5
Protein Name :	Retinol-binding protein 5
Human Gene Id :	83758
Human Swiss Prot No :	P82980
Immunogen :	The antiserum was produced against synthesized peptide derived from human CRBP III. AA range:10-59
Specificity :	CRBP-III Polyclonal Antibody detects endogenous levels of CRBP-III protein.
Formulation :	Liquid in PBS containing 50% glycerol, 0.5% BSA and 0.02% sodium azide.
Source :	Polyclonal, Rabbit,IgG
Dilution :	IHC 1:100 - 1:300. IF 1:200 - 1:1000. ELISA: 1:20000. Not yet tested in other applications.
Purification :	The antibody was affinity-purified from rabbit antiserum by affinity-chromatography using epitope-specific immunogen.
Concentration :	1 mg/ml
Storage Stability :	-15°C to -25°C/1 year(Do not lower than -25°C)
Molecularweight :	16kD
Background :	retinol binding protein 5(RBP5) Homo sapiens The protein encoded by this gene

is a cellular retinol-binding protein expressed highly in kidney and liver. Down-regulation of the encoded protein in hepatocellular carcinoma was associated with large tumor size and poor patient survival rates. [provided by RefSeq, Jul 2016],

Function :

domain:Forms a beta-barrel structure that accommodates hydrophobic ligands in its interior.,function:Intracellular transport of retinol.,similarity:Belongs to the calycin superfamily. Fatty-acid binding protein (FABP) family.,tissue specificity:Higher expression in adult kidney and liver and to a lesser extent in adult and fetal spleen, adult lymph nodes and appendix, and fetal liver and kidney. Strongly decreased in hepatocellular carcinoma tissues (at protein level).,

Subcellular Location :

Cytoplasm .

Expression :

Higher expression in adult kidney and liver and to a lesser extent in adult and fetal spleen, adult lymph nodes and appendix, and fetal liver and kidney. Strongly decreased in hepatocellular carcinoma tissues (at protein level).

Sort :

4539

No4 :

1

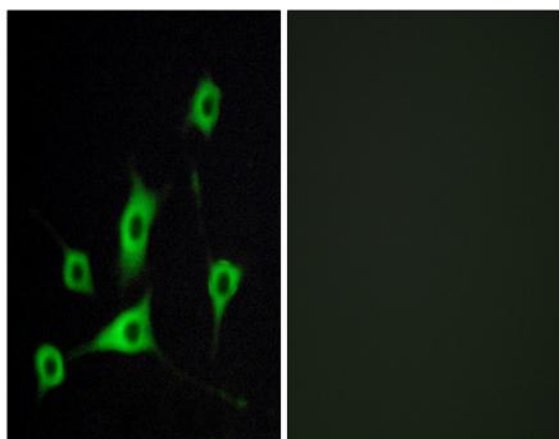
Host :

Rabbit

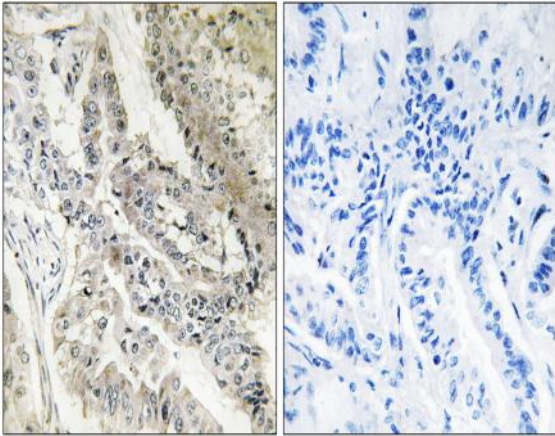
Modifications :

Unmodified

Products Images



Immunofluorescence analysis of LOVO cells, using CRBP III Antibody. The picture on the right is blocked with the synthesized peptide.



Immunohistochemistry analysis of paraffin-embedded human lung carcinoma tissue, using CRBP III Antibody. The picture on the right is blocked with the synthesized peptide.