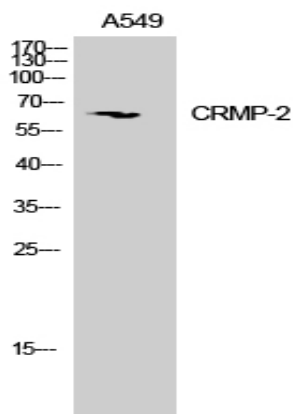


CRMP-2 Polyclonal Antibody

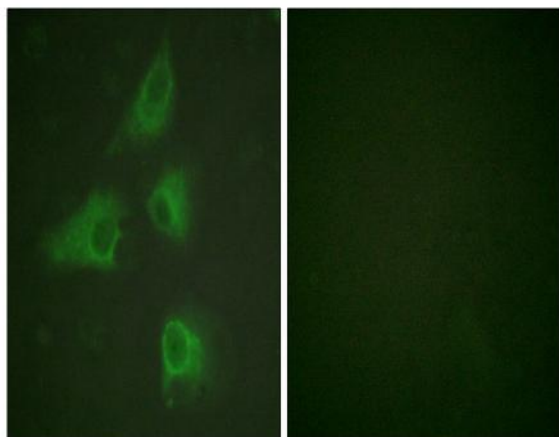
Catalog No :	YT1115
Reactivity :	Human;Mouse;Rat
Applications :	WB;IHC;IF;ELISA
Target :	CRMP-2
Fields :	>>Axon guidance
Gene Name :	DPYSL2
Protein Name :	Dihydropyrimidinase-related protein 2
Human Gene Id :	1808
Human Swiss Prot No :	Q16555
Mouse Gene Id :	12934
Mouse Swiss Prot No :	O08553
Rat Gene Id :	25416
Rat Swiss Prot No :	P47942
Immunogen :	The antiserum was produced against synthesized peptide derived from human DRP-2. AA range:480-529
Specificity :	CRMP-2 Polyclonal Antibody detects endogenous levels of CRMP-2 protein.
Formulation :	Liquid in PBS containing 50% glycerol, 0.5% BSA and 0.02% sodium azide.
Source :	Polyclonal, Rabbit,IgG
Dilution :	WB 1:500 - 1:2000. IHC 1:100 - 1:300. IF 1:200 - 1:1000. ELISA: 1:20000. Not yet tested in other applications.

Purification :	The antibody was affinity-purified from rabbit antiserum by affinity-chromatography using epitope-specific immunogen.
Concentration :	1 mg/ml
Storage Stability :	-15°C to -25°C/1 year(Do not lower than -25°C)
Observed Band :	62kD
Cell Pathway :	Axon guidance;
Background :	This gene encodes a member of the collapsin response mediator protein family. Collapsin response mediator proteins form homo- and hetero-tetramers and facilitate neuron guidance, growth and polarity. The encoded protein promotes microtubule assembly and is required for Sema3A-mediated growth cone collapse, and also plays a role in synaptic signaling through interactions with calcium channels. This gene has been implicated in multiple neurological disorders, and hyperphosphorylation of the encoded protein may play a key role in the development of Alzheimer's disease. Alternatively spliced transcript variants encoding multiple isoforms have been observed for this gene. [provided by RefSeq, Sep 2011],
Function :	function:Necessary for signaling by class 3 semaphorins and subsequent remodeling of the cytoskeleton. Plays a role in axon guidance, neuronal growth cone collapse and cell migration.,PTM:3F4, a monoclonal antibody which strongly stains neurofibrillary tangles in Alzheimer disease brains, specifically labels DPYSL2 when phosphorylated on Ser-518, Ser-522 and Thr-509.,similarity:Belongs to the DHOase family. Hydantoinase/dihydropyrimidinase subfamily.,subunit:Homotetramer, and heterotetramer with CRMP1, DPYSL3, DPYSL4 or DPYSL5 (By similarity). Interacts through its C-terminus with the C-terminus of CYFIP1/SRA1. Interacts with HTR4.,tissue specificity:Ubiquitous.,
Subcellular Location :	Cytoplasm, cytosol . Cytoplasm, cytoskeleton . Membrane . Tightly but non-covalently associated with membranes.
Expression :	Ubiquitous.
Tag :	orthogonal,hot
Sort :	4585
No4 :	1
Host :	Rabbit

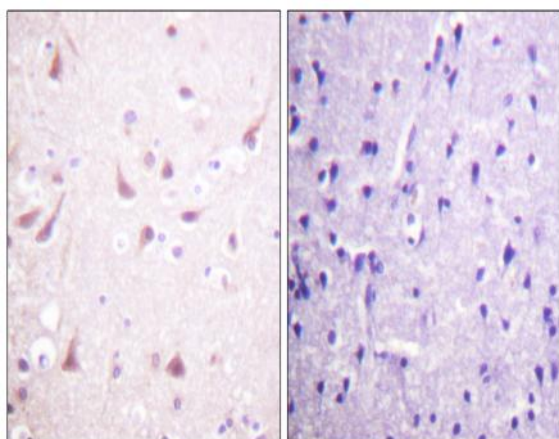
Products Images



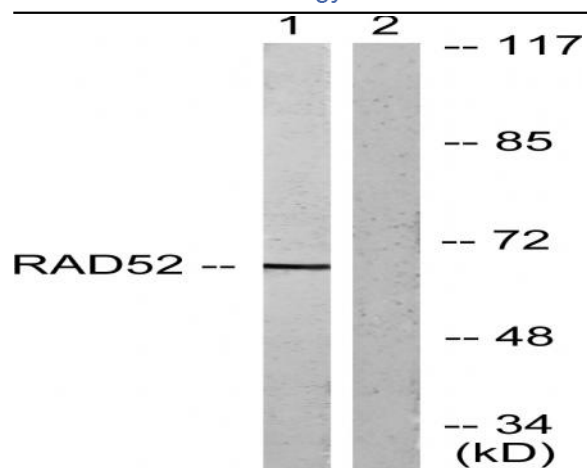
Western Blot analysis of mouse brain cells using CRMP-2 Polyclonal Antibody



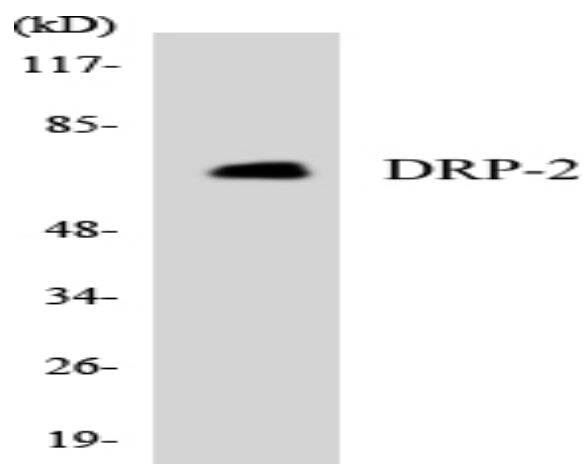
Immunofluorescence analysis of HeLa cells, using DRP-2 Antibody. The picture on the right is blocked with the synthesized peptide.



Immunohistochemistry analysis of paraffin-embedded human brain tissue, using DRP-2 Antibody. The picture on the right is blocked with the synthesized peptide.



Western blot analysis of lysates from A549 cells, treated with EGF 200ng/ml 30', using DRP-2 Antibody. The lane on the right is blocked with the synthesized peptide.



Western blot analysis of the lysates from HepG2 cells using DRP-2 antibody.