

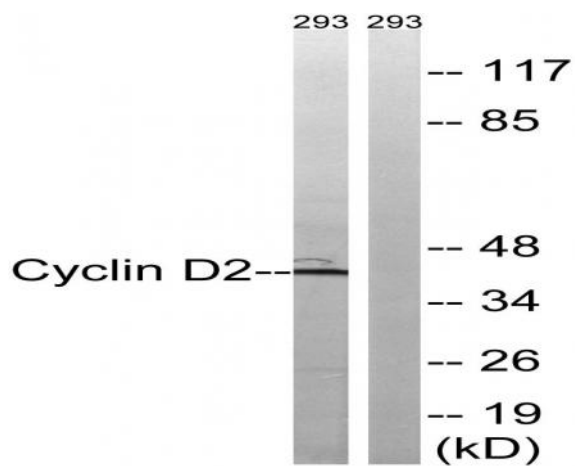
Cyclin D2 Polyclonal Antibody

Catalog No :	YT1174
Reactivity :	Human;Mouse;Rat
Applications :	WB;IHC;IF;ELISA
Target :	Cyclin D2
Fields :	>>FoxO signaling pathway;>>Cell cycle;>>p53 signaling pathway;>>PI3K-Akt signaling pathway;>>Cellular senescence;>>Wnt signaling pathway;>>Hedgehog signaling pathway;>>Hippo signaling pathway;>>Focal adhesion;>>JAK-STAT signaling pathway;>>Prolactin signaling pathway;>>Measles;>>Human papillomavirus infection;>>Human T-cell leukemia virus 1 infection;>>Epstein-Barr virus infection;>>Pathways in cancer;>>Transcriptional misregulation in cancer;>>Viral carcinogenesis;>>MicroRNAs in cancer
Gene Name :	CCND2
Protein Name :	G1/S-specific cyclin-D2
Human Gene Id :	894
Human Swiss Prot No :	P30279
Mouse Gene Id :	12444
Mouse Swiss Prot No :	P30280
Rat Gene Id :	64033
Rat Swiss Prot No :	Q04827
Immunogen :	The antiserum was produced against synthesized peptide derived from human CCND2. AA range:240-289
Specificity :	Cyclin D2 Polyclonal Antibody detects endogenous levels of Cyclin D2 protein.
Formulation :	Liquid in PBS containing 50% glycerol, 0.5% BSA and 0.02% sodium azide.

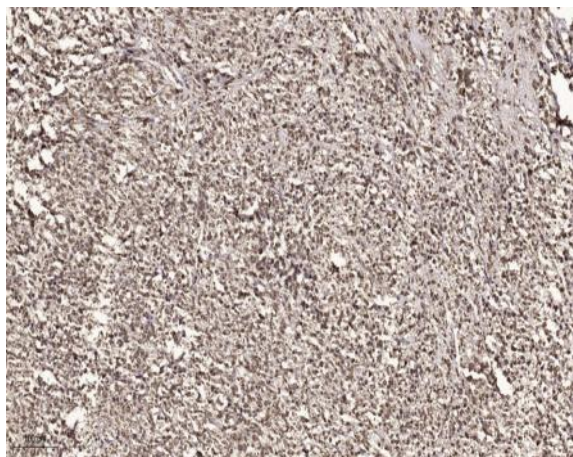
Source :	Polyclonal, Rabbit,IgG
Dilution :	WB 1:500 - 1:2000. IHC 1:100 - 1:300. ELISA: 1:20000.. IF 1:50-200
Purification :	The antibody was affinity-purified from rabbit antiserum by affinity-chromatography using epitope-specific immunogen.
Concentration :	1 mg/ml
Storage Stability :	-15°C to -25°C/1 year(Do not lower than -25°C)
Observed Band :	42kD
Cell Pathway :	Cell_Cycle_G1S;Cell_Cycle_G2M_DNA;p53;WNT;WNT-T CELLFocal adhesion;Jak_STAT;
Background :	<p>The protein encoded by this gene belongs to the highly conserved cyclin family, whose members are characterized by a dramatic periodicity in protein abundance through the cell cycle. Cyclins function as regulators of CDK kinases. Different cyclins exhibit distinct expression and degradation patterns which contribute to the temporal coordination of each mitotic event. This cyclin forms a complex with CDK4 or CDK6 and functions as a regulatory subunit of the complex, whose activity is required for cell cycle G1/S transition. This protein has been shown to interact with and be involved in the phosphorylation of tumor suppressor protein Rb. Knockout studies of the homologous gene in mouse suggest the essential roles of this gene in ovarian granulosa and germ cell proliferation. High level expression of this gene was observed in ovarian and testicular tumors. Mutations in this gene are associated with megalencep</p>
Function :	<p>function:Essential for the control of the cell cycle at the G1/S (start) transition.,similarity:Belongs to the cyclin family.,similarity:Belongs to the cyclin family. Cyclin D subfamily.,subunit:Interacts with the CDK4 and CDK6 protein kinases to form a serine/threonine kinase holoenzyme complex. The cyclin subunit imparts substrate specificity to the complex.,</p>
Subcellular Location :	Nucleus . Cytoplasm . Nucleus membrane . Cyclin D-CDK4 complexes accumulate at the nuclear membrane and are then translocated into the nucleus through interaction with KIP/CIP family members. .; [Isoform 2]: Cytoplasm .
Expression :	Bone marrow,Heart,Placenta,Uterus,
Sort :	4726
No4 :	1

Host : Rabbit**Modifications :** Unmodified

Products Images



Western blot analysis of lysates from 293 cells, using Cyclin D2 Antibody. The lane on the right is blocked with the synthesized peptide.



Immunohistochemical analysis of paraffin-embedded human small intestinal carcinoma tissue. 1, primary Antibody was diluted at 1:200 (4° overnight). 2, Sodium citrate pH 6.0 was used for antigen retrieval (>98°C, 20min). 3, Secondary antibody was diluted at 1:200