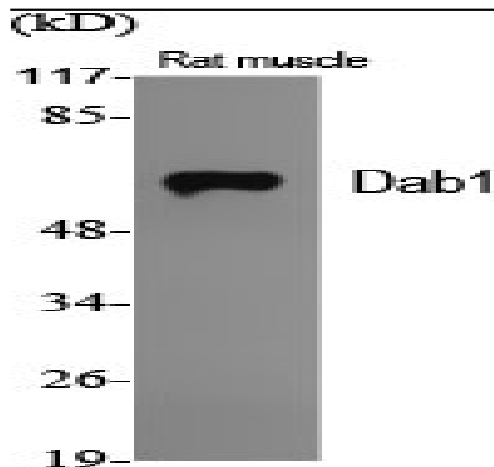


Dab1 Polyclonal Antibody

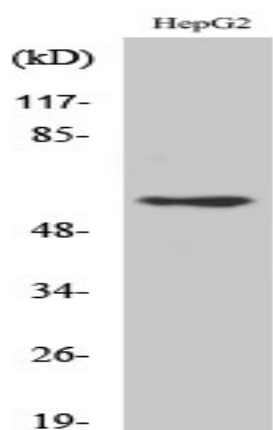
Catalog No :	YT1282
Reactivity :	Human;Mouse;Rat
Applications :	WB;IF;ELISA
Target :	Dab1
Fields :	>>Spinocerebellar ataxia
Gene Name :	DAB1
Protein Name :	Disabled homolog 1
Human Gene Id :	1600
Human Swiss Prot No :	O75553
Mouse Gene Id :	13131
Mouse Swiss Prot No :	P97318
Rat Gene Id :	266729
Rat Swiss Prot No :	Q8CJH2
Immunogen :	The antiserum was produced against synthesized peptide derived from human Dab1. AA range:199-248
Specificity :	Dab1 Polyclonal Antibody detects endogenous levels of Dab1 protein.
Formulation :	Liquid in PBS containing 50% glycerol, 0.5% BSA and 0.02% sodium azide.
Source :	Polyclonal, Rabbit,IgG
Dilution :	WB 1:500 - 1:2000. IF 1:200 - 1:1000. ELISA: 1:20000. Not yet tested in other applications.

Purification :	The antibody was affinity-purified from rabbit antiserum by affinity-chromatography using epitope-specific immunogen.
Concentration :	1 mg/ml
Storage Stability :	-15°C to -25°C/1 year(Do not lower than -25°C)
Observed Band :	80kD
Background :	The laminar organization of multiple neuronal types in the cerebral cortex is required for normal cognitive function. In mice, the disabled-1 gene plays a central role in brain development, directing the migration of cortical neurons past previously formed neurons to reach their proper layer. This gene is similar to disabled-1, and the protein encoded by this gene is thought to be a signal transducer that interacts with protein kinase pathways to regulate neuronal positioning in the developing brain. Alternatively spliced transcript variants of this gene have been reported, but their full length nature has not been determined. [provided by RefSeq, Jul 2008],
Function :	domain:The PID domain specifically binds to the Asn-Pro-Xaa-Tyr(P) motif found in many tyrosine-phosphorylated proteins.,function:Adapter molecule functioning in neural development. May regulate SIAH1 activity.,PTM:Phosphorylated on Tyr-198 and Tyr-220 upon reelin induction in embryonic neurons (By similarity). Also phosphorylated on Ser-524 independently of reelin signaling.,similarity:Contains 1 PID domain.,subunit:Associates with the SH2 domains of SRC, FYN and ABL. Interacts with DAB2IP and SIAH1 (By similarity). Interacts with LRP1.,
Subcellular Location :	nucleolus,microtubule organizing center,cytosol,brush border,postsynaptic density,membrane,neuron projection,neuronal cell body,intracellular membrane-bounded organelle,apical part of cell,perinuclear region of cytoplasm,
Expression :	Mainly expressed in brain.
Sort :	4982
No4 :	1
Host :	Rabbit
Modifications :	Unmodified

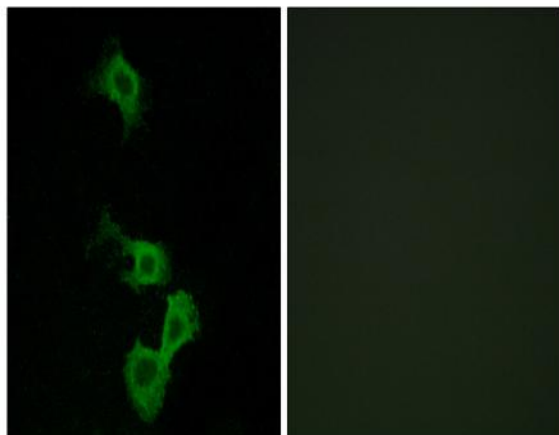
Products Images



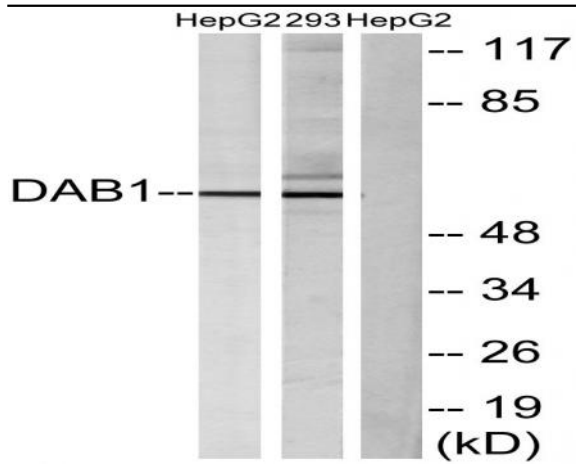
Western Blot analysis of various cells using Dab1 Polyclonal Antibody



Western Blot analysis of 293 cells using Dab1 Polyclonal Antibody



Immunofluorescence analysis of MCF7 cells, using Dab1 Antibody. The picture on the right is blocked with the synthesized peptide.



Western blot analysis of lysates from HepG2 and 293 cells, using Dab1 Antibody. The lane on the right is blocked with the synthesized peptide.