

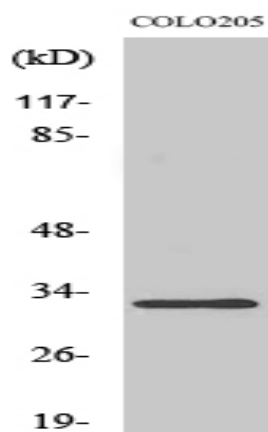
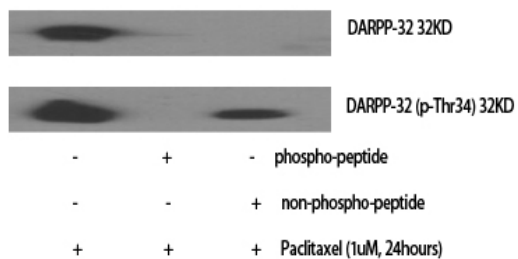
DARPP-32 Polyclonal Antibody

Catalog No :	YT1291
Reactivity :	Human;Mouse;Rat
Applications :	WB;IHC;IF;ELISA
Target :	DARPP-32
Fields :	>>cAMP signaling pathway;>>Dopaminergic synapse;>>Cocaine addiction;>>Amphetamine addiction;>>Alcoholism
Gene Name :	PPP1R1B
Protein Name :	Protein phosphatase 1 regulatory subunit 1B
Human Gene Id :	84152
Human Swiss Prot No :	Q9UD71
Mouse Gene Id :	19049
Mouse Swiss Prot No :	Q60829
Rat Gene Id :	360616
Rat Swiss Prot No :	Q6J4I0
Immunogen :	The antiserum was produced against synthesized peptide derived from human DARPP-32. AA range:41-90
Specificity :	DARPP-32 Polyclonal Antibody detects endogenous levels of DARPP-32 protein.
Formulation :	Liquid in PBS containing 50% glycerol, 0.5% BSA and 0.02% sodium azide.
Source :	Polyclonal, Rabbit,IgG
Dilution :	WB 1:500 - 1:2000. IHC 1:100 - 1:300. ELISA: 1:40000.. IF 1:50-200

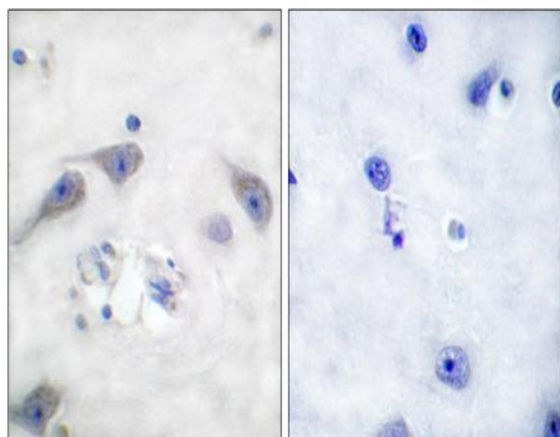
Purification :	The antibody was affinity-purified from rabbit antiserum by affinity-chromatography using epitope-specific immunogen.
Concentration :	1 mg/ml
Storage Stability :	-15°C to -25°C/1 year(Do not lower than -25°C)
Observed Band :	32kD
Background :	This gene encodes a bifunctional signal transduction molecule. Dopaminergic and glutamatergic receptor stimulation regulates its phosphorylation and function as a kinase or phosphatase inhibitor. As a target for dopamine, this gene may serve as a therapeutic target for neurologic and psychiatric disorders. Multiple transcript variants encoding different isoforms have been found for this gene. [provided by RefSeq, Oct 2011],
Function :	function:Inhibitor of protein-phosphatase 1.,PTM:Dopamine- and cyclic AMP-regulated neuronal phosphoprotein.,PTM:Phosphorylation of Thr-34 is required for activity.,similarity:Belongs to the protein phosphatase inhibitor 1 family.,
Subcellular Location :	Cytoplasm.
Expression :	Adipose tissue,Brain,Cerebellum,Colon,Ovary,
Tag :	orthogonal
Sort :	5000
No4 :	1
Host :	Rabbit
Modifications :	Unmodified

Products Images

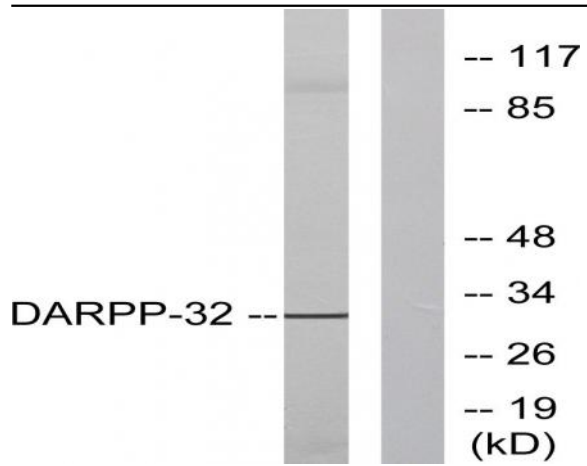
Western Blot analysis of various cells using DARPP-32
Polyclonal Antibody diluted at 1:500



Western Blot analysis of COLO205 cells using DARPP-32
Polyclonal Antibody diluted at 1:500



Immunohistochemistry analysis of paraffin-embedded human
brain tissue, using DARPP-32 Antibody. The picture on the right
is blocked with the synthesized peptide.



Western blot analysis of lysates from 293 cells, treated with EGF 200ng/ml 30', using DARPP-32 Antibody. The lane on the right is blocked with the synthesized peptide.