

DLC-1 Polyclonal Antibody

Catalog No :	YT1356
Reactivity :	Human;Mouse;Rat
Applications :	IHC;IF;ELISA
Target :	DLC-1
Gene Name :	DLC1
Protein Name :	Rho GTPase-activating protein 7
Human Gene Id :	10395
Human Swiss Prot No :	Q96QB1
Mouse Gene Id :	50768
Mouse Swiss Prot No :	Q9R0Z9
Rat Swiss Prot No :	Q63744
Immunogen :	The antiserum was produced against synthesized peptide derived from human RHG07. AA range:61-110
Specificity :	DLC-1 Polyclonal Antibody detects endogenous levels of DLC-1 protein.
Formulation :	Liquid in PBS containing 50% glycerol, 0.5% BSA and 0.02% sodium azide.
Source :	Polyclonal, Rabbit,IgG
Dilution :	IHC 1:100 - 1:300. IF 1:200 - 1:1000. ELISA: 1:10000. Not yet tested in other applications.
Purification :	The antibody was affinity-purified from rabbit antiserum by affinity-chromatography using epitope-specific immunogen.
Concentration :	1 mg/ml

Storage Stability : -15°C to -25°C/1 year(Do not lower than -25°C)

Molecularweight : 123kD

Background : This gene encodes a GTPase-activating protein (GAP) that is a member of the rhoGAP family of proteins which play a role in the regulation of small GTP-binding proteins. GAP family proteins participate in signaling pathways that regulate cell processes involved in cytoskeletal changes. This gene functions as a tumor suppressor gene in a number of common cancers, including prostate, lung, colorectal, and breast cancers. Multiple transcript variants due to alternative promoters and alternative splicing have been found for this gene.[provided by RefSeq, Apr 2010],

Function : function:Functions as a GTPase-activating protein specific for Rho and an activator of PLCD1 in vivo and induces morphological changes and detachment through cytoskeletal reorganization.,sequence caution:Chimera. Sequence from position 1 to 13 is due to a chimera.,similarity:Contains 1 Rho-GAP domain.,similarity:Contains 1 SAM (sterile alpha motif) domain.,similarity:Contains 1 START domain.,tissue specificity:Highest level of expression in the spleen, with rather lower levels in prostate, testis, ovary, small intestine and colon, but none in the thymus.,

Subcellular Location : Cytoplasm. Cell junction, focal adhesion. Membrane; Peripheral membrane protein. Colocalizes with EF1A1 at actin-rich regions in the cell periphery.

Expression : Highest level of expression in the spleen, with rather lower levels in prostate, testis, ovary, small intestine and colon, but none in the thymus.

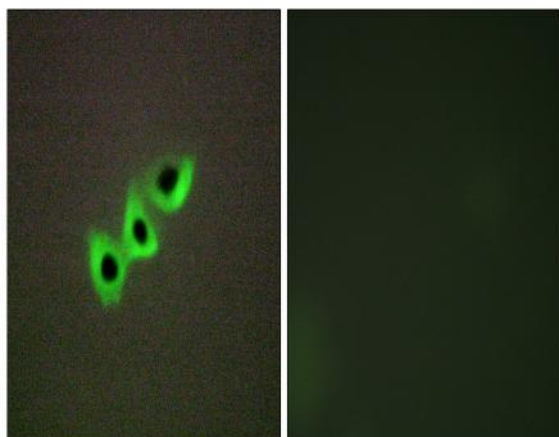
Sort : 5153

No4 : 1

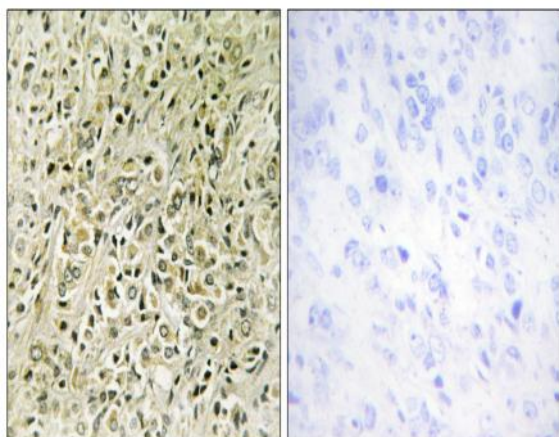
Host : Rabbit

Modifications : Unmodified

Products Images



Immunofluorescence analysis of A549 cells, using RHG07 Antibody. The picture on the right is blocked with the synthesized peptide.



Immunohistochemistry analysis of paraffin-embedded human prostate carcinoma tissue, using RHG07 Antibody. The picture on the right is blocked with the synthesized peptide.