

## Dlx-4 Polyclonal Antibody

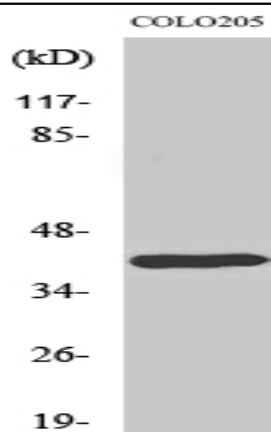
<b>Catalog No :</b>	YT1359
<b>Reactivity :</b>	Human;Mouse
<b>Applications :</b>	WB;IHC;IF;ELISA
<b>Target :</b>	Dlx-4
<b>Gene Name :</b>	DLX4
<b>Protein Name :</b>	Homeobox protein DLX-4
<b>Human Gene Id :</b>	1748
<b>Human Swiss Prot No :</b>	Q92988
<b>Mouse Swiss Prot No :</b>	P70436
<b>Immunogen :</b>	The antiserum was produced against synthesized peptide derived from human DLX4. AA range:61-110
<b>Specificity :</b>	Dlx-4 Polyclonal Antibody detects endogenous levels of Dlx-4 protein.
<b>Formulation :</b>	Liquid in PBS containing 50% glycerol, 0.5% BSA and 0.02% sodium azide.
<b>Source :</b>	Polyclonal, Rabbit,IgG
<b>Dilution :</b>	WB 1:500 - 1:2000. IHC 1:100 - 1:300. IF 1:200 - 1:1000. ELISA: 1:5000. Not yet tested in other applications.
<b>Purification :</b>	The antibody was affinity-purified from rabbit antiserum by affinity-chromatography using epitope-specific immunogen.
<b>Concentration :</b>	1 mg/ml
<b>Storage Stability :</b>	-15°C to -25°C/1 year(Do not lower than -25°C)
<b>Observed Band :</b>	34kD

---

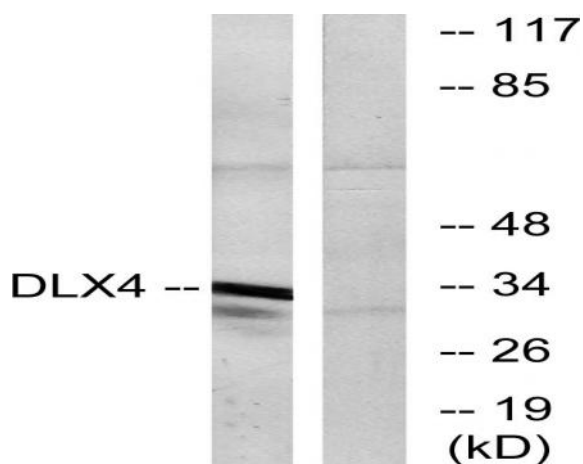
<b>Background :</b>	Many vertebrate homeo box-containing genes have been identified on the basis of their sequence similarity with Drosophila developmental genes. Members of the Dlx gene family contain a homeobox that is related to that of Distal-less (Dll), a gene expressed in the head and limbs of the developing fruit fly. The Distal-less (Dlx) family of genes comprises at least 6 different members, DLX1-DLX6. The DLX proteins are postulated to play a role in forebrain and craniofacial development. Three transcript variants have been described for this gene, however, the full length nature of one variant has not been described. Studies of the two splice variants revealed that one encoded isoform functions as a repressor of the beta-globin gene while the other isoform lacks that function. [provided by RefSeq, Jul 2008],
<b>Function :</b>	alternative products:Additional isoforms seem to exist. Ref.8 (AAC51171) sequence may be an additional isoform,function:May play a role in determining the production of hemoglobin S. May act as a repressor.,similarity:Belongs to the distal-less homeobox family.,similarity:Contains 1 homeobox DNA-binding domain.,tissue specificity:Expressed in leukemia cells and placenta. Also expressed in kidney and fetal liver.,
<b>Subcellular Location :</b>	Nucleus .
<b>Expression :</b>	Expressed in leukemia cells and placenta. Also expressed in kidney and fetal liver.
<b>Sort :</b>	5161
<b>No4 :</b>	1
<b>Host :</b>	Rabbit
<b>Modifications :</b>	Unmodified

---

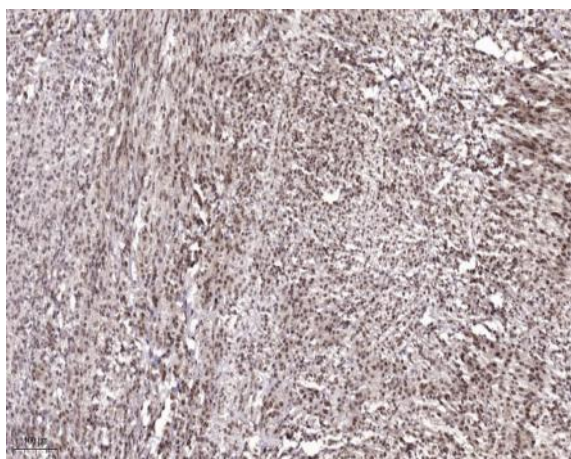
## Products Images



Western Blot analysis of various cells using Dlx-4 Polyclonal Antibody cells nucleus extracted by Minute TM Cytoplasmic and Nuclear Fractionation kit (SC-003, Inventbiotech, MN, USA).



Western blot analysis of lysates from COLO cells, using DLX4 Antibody. The lane on the right is blocked with the synthesized peptide.



Immunohistochemical analysis of paraffin-embedded human Colon cancer. 1, Antibody was diluted at 1:200(4° overnight). 2, Tris-EDTA,pH9.0 was used for antigen retrieval. 3,Secondary antibody was diluted at 1:200(room temperature, 45min).