

**DNAM-1 Polyclonal Antibody**

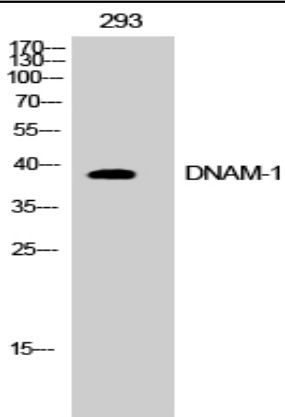
<b>Catalog No :</b>	YT1381
<b>Reactivity :</b>	Human;Mouse;Monkey
<b>Applications :</b>	WB;IHC;IF;ELISA
<b>Target :</b>	DNAM-1
<b>Fields :</b>	>>Cell adhesion molecules
<b>Gene Name :</b>	CD226
<b>Protein Name :</b>	CD226 antigen
<b>Human Gene Id :</b>	10666
<b>Human Swiss Prot No :</b>	Q15762
<b>Mouse Gene Id :</b>	225825
<b>Mouse Swiss Prot No :</b>	Q8K4F0
<b>Immunogen :</b>	The antiserum was produced against synthesized peptide derived from human CD226/DNAM-1. AA range:287-336
<b>Specificity :</b>	DNAM-1 Polyclonal Antibody detects endogenous levels of DNAM-1 protein.
<b>Formulation :</b>	Liquid in PBS containing 50% glycerol, 0.5% BSA and 0.02% sodium azide.
<b>Source :</b>	Polyclonal, Rabbit,IgG
<b>Dilution :</b>	WB 1:500 - 1:2000. IHC 1:100 - 1:300. IF 1:200 - 1:1000. ELISA: 1:20000. Not yet tested in other applications.
<b>Purification :</b>	The antibody was affinity-purified from rabbit antiserum by affinity-chromatography using epitope-specific immunogen.
<b>Concentration :</b>	1 mg/ml

---

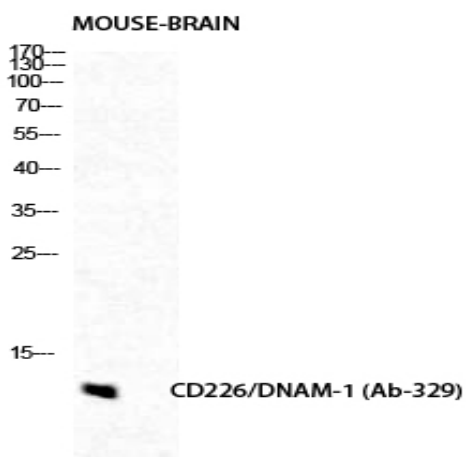
<b>Storage Stability :</b>	-15°C to -25°C/1 year(Do not lower than -25°C)
<b>Observed Band :</b>	38kD
<b>Cell Pathway :</b>	Cell adhesion molecules (CAMs);
<b>Background :</b>	This gene encodes a glycoprotein expressed on the surface of NK cells, platelets, monocytes and a subset of T cells. It is a member of the Ig-superfamily containing 2 Ig-like domains of the V-set. The protein mediates cellular adhesion of platelets and megakaryocytic cells to vascular endothelial cells. The protein also plays a role in megakaryocytic cell maturation. Alternative splicing results in multiple transcript variants. [provided by RefSeq, Jan 2015],
<b>Function :</b>	function:Receptor involved in intercellular adhesion, lymphocyte signaling, cytotoxicity and lymphokine secretion mediated by cytotoxic T-lymphocyte (CTL) and NK cell.,PTM:Phosphorylated.,similarity:Contains 2 Ig-like C2-type (immunoglobulin-like) domains.,subunit:Interacts with PVR and PVRL2.,tissue specificity:Expressed by peripheral blood T-lymphocytes.,
<b>Subcellular Location :</b>	Cell membrane ; Single-pass type I membrane protein .
<b>Expression :</b>	Expressed by peripheral blood T-lymphocytes.
<b>Tag :</b>	orthogonal
<b>Sort :</b>	5191
<b>No4 :</b>	1
<b>Host :</b>	Rabbit
<b>Modifications :</b>	Unmodified

---

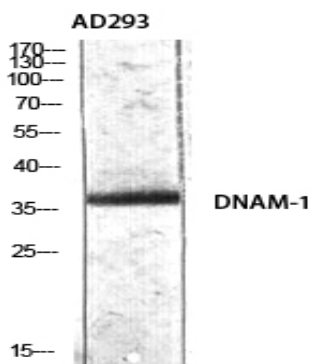
## Products Images



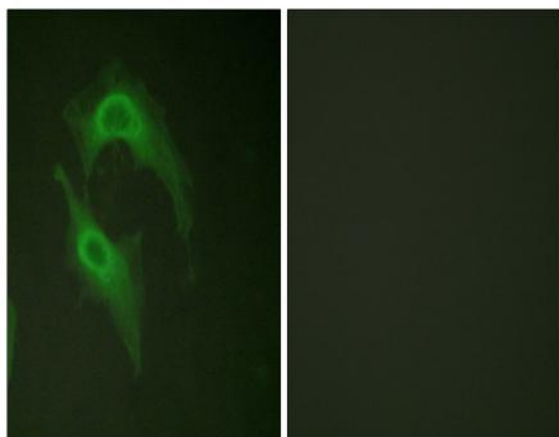
Western Blot analysis of COS7 cells using DNAM-1 Polyclonal Antibody diluted at 1:500



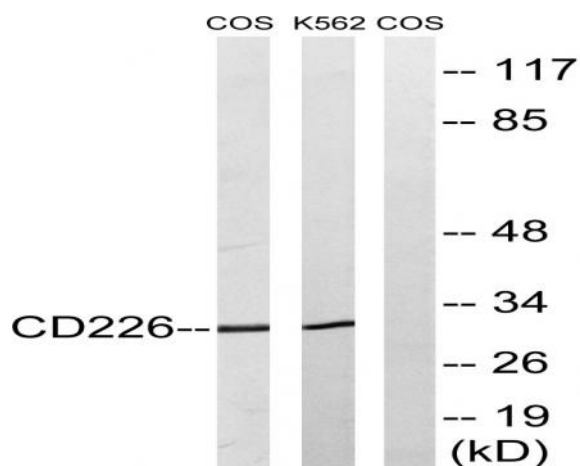
Western Blot analysis of mouse-brain cells using DNAM-1 Polyclonal Antibody diluted at 1:500



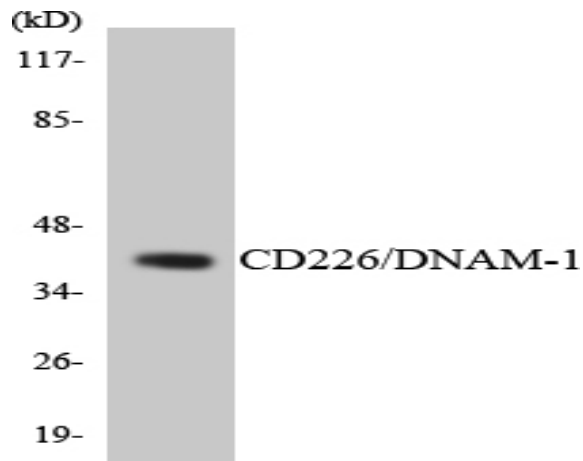
Western Blot analysis of AD293 using DNAM-1 Polyclonal Antibody diluted at 1:500



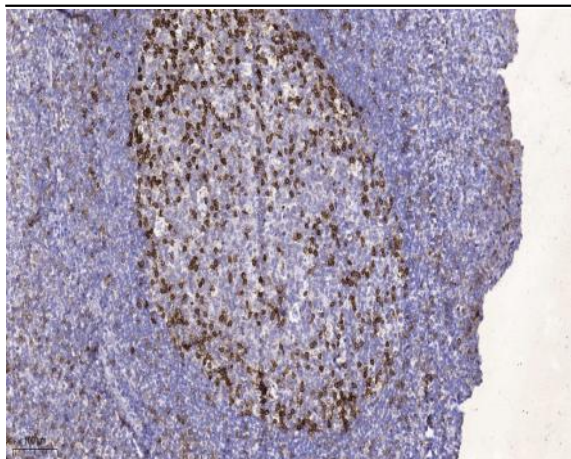
Immunofluorescence analysis of HeLa cells, using CD226/DNAM-1 Antibody. The picture on the right is blocked with the synthesized peptide.



Western blot analysis of lysates from COS7 and K562 cells, treated with PMA 125ng/ml 30', using CD226/DNAM-1 Antibody. The lane on the right is blocked with the synthesized peptide.



Western blot analysis of the lysates from HUVEC cells using CD226/DNAM-1 antibody.



Immunohistochemical analysis of paraffin-embedded human tonsil. 1, Antibody was diluted at 1:200(4° overnight). 2, Tris-EDTA,pH9.0 was used for antigen retrieval. 3,Secondary antibody was diluted at 1:200(room temperature, 45min).