

## DOR-1 Polyclonal Antibody

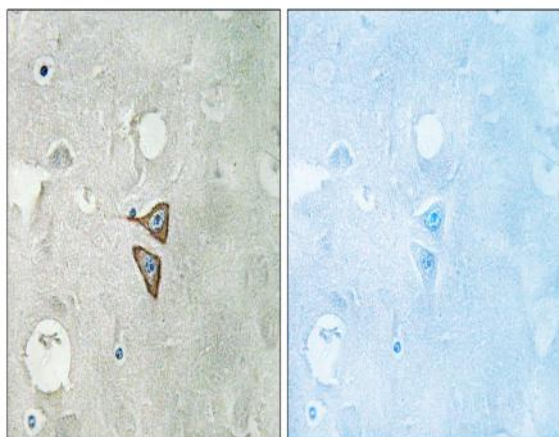
<b>Catalog No :</b>	YT1403
<b>Reactivity :</b>	Human;Mouse;Rat;Monkey
<b>Applications :</b>	WB;IHC;IF;ELISA
<b>Target :</b>	DOR-1
<b>Fields :</b>	>>cGMP-PKG signaling pathway;>>Sphingolipid signaling pathway;>>Neuroactive ligand-receptor interaction
<b>Gene Name :</b>	OPRD1
<b>Protein Name :</b>	Delta-type opioid receptor
<b>Human Gene Id :</b>	4985
<b>Human Swiss Prot No :</b>	P41143
<b>Mouse Gene Id :</b>	18386
<b>Mouse Swiss Prot No :</b>	P32300
<b>Rat Gene Id :</b>	24613
<b>Rat Swiss Prot No :</b>	P33533
<b>Immunogen :</b>	The antiserum was produced against synthesized peptide derived from human Opioid Receptor-delta. AA range:323-372
<b>Specificity :</b>	DOR-1 Polyclonal Antibody detects endogenous levels of DOR-1 protein.
<b>Formulation :</b>	Liquid in PBS containing 50% glycerol, 0.5% BSA and 0.02% sodium azide.
<b>Source :</b>	Polyclonal, Rabbit,IgG
<b>Dilution :</b>	WB 1:500 - 1:2000. IHC 1:100 - 1:300. ELISA: 1:20000.. IF 1:50-200

---

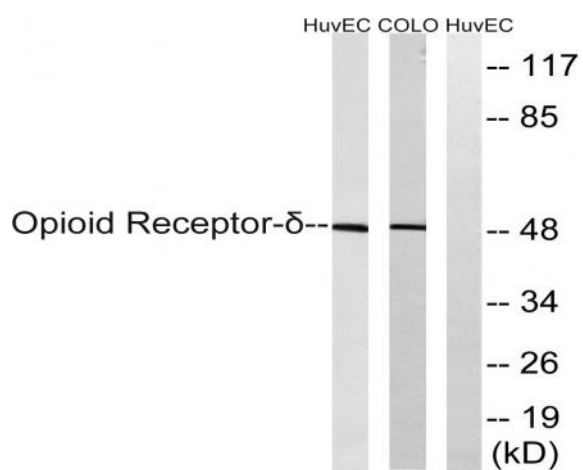
<b>Purification :</b>	The antibody was affinity-purified from rabbit antiserum by affinity-chromatography using epitope-specific immunogen.
<b>Concentration :</b>	1 mg/ml
<b>Storage Stability :</b>	-15°C to -25°C/1 year(Do not lower than -25°C)
<b>Observed Band :</b>	40kD
<b>Cell Pathway :</b>	Neuroactive ligand-receptor interaction;
<b>Background :</b>	function:Inhibits neurotransmitter release by reducing calcium ion currents and increasing potassium ion conductance. Highly stereoselective. receptor for enkephalins.,online information:Delta opioid receptor entry,similarity:Belongs to the G-protein coupled receptor 1 family.,subunit:Interacts with GPRASP1.,
<b>Function :</b>	function:Inhibits neurotransmitter release by reducing calcium ion currents and increasing potassium ion conductance. Highly stereoselective. receptor for enkephalins.,online information:Delta opioid receptor entry,similarity:Belongs to the G-protein coupled receptor 1 family.,subunit:Interacts with GPRASP1.,
<b>Subcellular Location :</b>	Cell membrane ; Multi-pass membrane protein .
<b>Expression :</b>	Detected in oocytes (at protein level). Detected in brain cortex, hypothalamus, hippocampus and olfactory bulb. Detected in oocytes.
<b>Tag :</b>	hot
<b>Sort :</b>	5231
<b>No4 :</b>	1
<b>Host :</b>	Rabbit
<b>Modifications :</b>	Unmodified

---

## Products Images



Immunohistochemistry analysis of paraffin-embedded human brain tissue, using Opioid Receptor-delta Antibody. The picture on the right is blocked with the synthesized peptide.



Western blot analysis of lysates from HUVEC and COLO205 cells, using Opioid Receptor-delta Antibody. The lane on the right is blocked with the synthesized peptide.