

Dsg1 Polyclonal Antibody

Catalog No :	YT1417
Reactivity :	Human;Mouse
Applications :	WB;ELISA
Target :	Dsg1
Fields :	>>Staphylococcus aureus infection
Gene Name :	DSG1
Protein Name :	Desmoglein-1
Human Gene Id :	1828
Human Swiss Prot No :	Q02413
Immunogen :	The antiserum was produced against synthesized peptide derived from human DSG1. AA range:161-210
Specificity :	Dsg1 Polyclonal Antibody detects endogenous levels of Dsg1 protein.
Formulation :	Liquid in PBS containing 50% glycerol, 0.5% BSA and 0.02% sodium azide.
Source :	Polyclonal, Rabbit,IgG
Dilution :	WB 1:500 - 1:2000. ELISA: 1:40000. Not yet tested in other applications.
Purification :	The antibody was affinity-purified from rabbit antiserum by affinity-chromatography using epitope-specific immunogen.
Concentration :	1 mg/ml
Storage Stability :	-15°C to -25°C/1 year(Do not lower than -25°C)
Observed Band :	114kD

Background : This gene encodes a member of the desmoglein protein subfamily. Desmogleins, along with desmocollins, are cadherin-like transmembrane glycoproteins that are major components of the desmosome. Desmosomes are cell-cell junctions that help resist shearing forces and are found in high concentrations in cells subject to mechanical stress. This gene is found in a cluster with other desmoglein family members on chromosome 18. The encoded protein has been identified as a target of auto-antibodies in the autoimmune skin blistering disease pemphigus foliaceus. Disruption of this gene has also been associated with the skin diseases palmoplantar keratoderma and erythroderma. [provided by RefSeq, Feb 2015],

Function : disease:Defects in DSG1 are the cause of palmoplantar keratoderma striate type 1 (SPPK1) [MIM:148700]; also known as keratosis palmoplantaris striata I. SPPK1 is a dermatological disorder characterized by thickening of the skin on the palms and soles, and longitudinal hyperkeratotic lesions on the palms, running the length of each finger.,domain:Calcium may be bound by the cadherin-like repeats.,function:Component of intercellular desmosome junctions. Involved in the interaction of plaque proteins and intermediate filaments mediating cell-cell adhesion.,similarity:Contains 4 cadherin domains.,tissue specificity:Epidermis, tongue, tonsil and esophagus.,

Subcellular Location : Cell membrane ; Single-pass type I membrane protein . Cell junction, desmosome.

Expression : Epidermis, tongue, tonsil and esophagus.

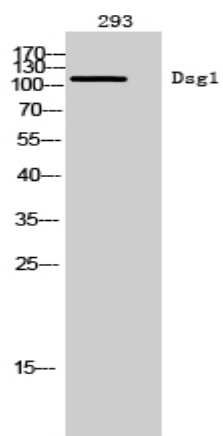
Sort : 5273

No4 : 1

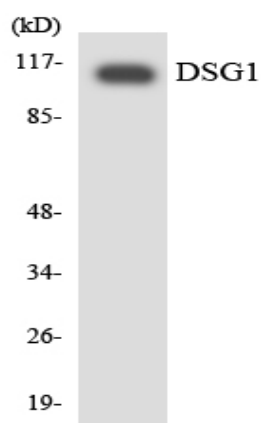
Host : Rabbit

Modifications : Unmodified

Products Images



Western Blot analysis of 293 cells using Dsg1 Polyclonal Antibody



Western blot analysis of the lysates from 293 cells using DSG1 antibody.