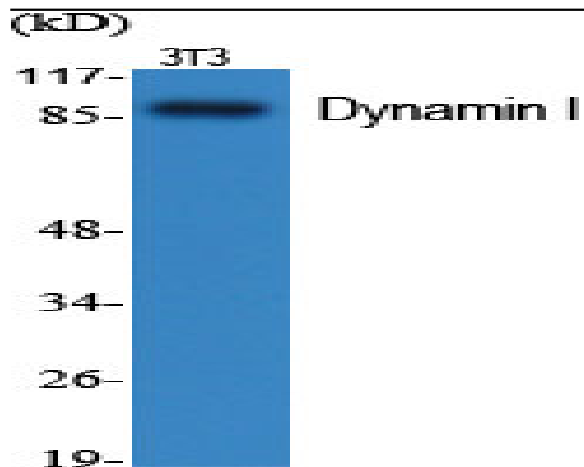


Dynamin I Polyclonal Antibody

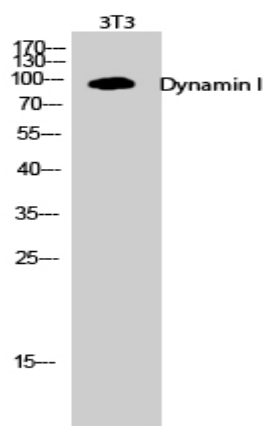
Catalog No :	YT1428
Reactivity :	Human;Mouse;Rat
Applications :	WB;IHC;IF;ELISA
Target :	Dynamin I
Fields :	>>Phospholipase D signaling pathway;>>Endocytosis;>>Synaptic vesicle cycle;>>Endocrine and other factor-regulated calcium reabsorption;>>Bacterial invasion of epithelial cells
Gene Name :	DNM1
Protein Name :	Dynamin-1
Human Gene Id :	1759
Human Swiss Prot No :	Q05193
Mouse Gene Id :	13429
Mouse Swiss Prot No :	P39053
Rat Gene Id :	140694
Rat Swiss Prot No :	P21575
Immunogen :	The antiserum was produced against synthesized peptide derived from human Dynamin-1. AA range:740-789
Specificity :	Dynamin I Polyclonal Antibody detects endogenous levels of Dynamin I protein.
Formulation :	Liquid in PBS containing 50% glycerol, 0.5% BSA and 0.02% sodium azide.
Source :	Polyclonal, Rabbit,IgG
Dilution :	WB 1:500 - 1:2000. IHC 1:100 - 1:300. ELISA: 1:40000.. IF 1:50-200

Purification :	The antibody was affinity-purified from rabbit antiserum by affinity-chromatography using epitope-specific immunogen.
Concentration :	1 mg/ml
Storage Stability :	-15°C to -25°C/1 year(Do not lower than -25°C)
Observed Band :	97kD
Cell Pathway :	Endocytosis;Fc gamma R-mediated phagocytosis;
Background :	dynamin 1(DNM1) Homo sapiens This gene encodes a member of the dynamin subfamily of GTP-binding proteins. The encoded protein possesses unique mechanochemical properties used to tubulate and sever membranes, and is involved in clathrin-mediated endocytosis and other vesicular trafficking processes. Actin and other cytoskeletal proteins act as binding partners for the encoded protein, which can also self-assemble leading to stimulation of GTPase activity. More than sixty highly conserved copies of the 3' region of this gene are found elsewhere in the genome, particularly on chromosomes Y and 15. Alternatively spliced transcript variants encoding different isoforms have been described. [provided by RefSeq, Jul 2008],
Function :	catalytic activity:GTP + H(2)O = GDP + phosphate.,function:Microtubule-associated force-producing protein involved in producing microtubule bundles and able to bind and hydrolyze GTP. Most probably involved in vesicular trafficking processes, in particular endocytosis.,similarity:Belongs to the dynamin family.,similarity:Contains 1 GED domain.,similarity:Contains 1 PH domain.,subcellular location:Microtubule-associated.,subunit:Interacts with CAV1 and SH3GLB1. Binds SH3GL1, SH3GL2 and SH3GL3.,
Subcellular Location :	Cytoplasm . Cytoplasm, cytoskeleton . Microtubule-associated.
Expression :	Brain,Platelet,PNS,
Sort :	5326
No4 :	1
Host :	Rabbit
Modifications :	Unmodified

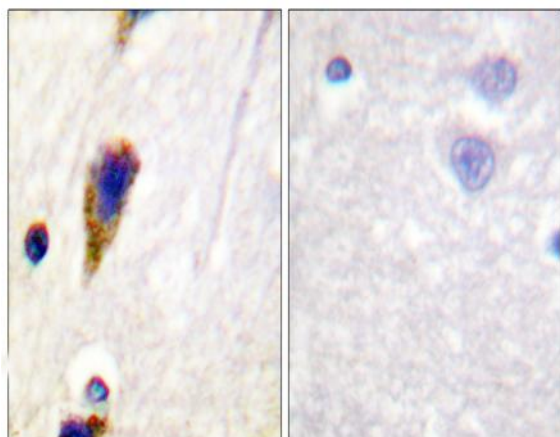
Products Images



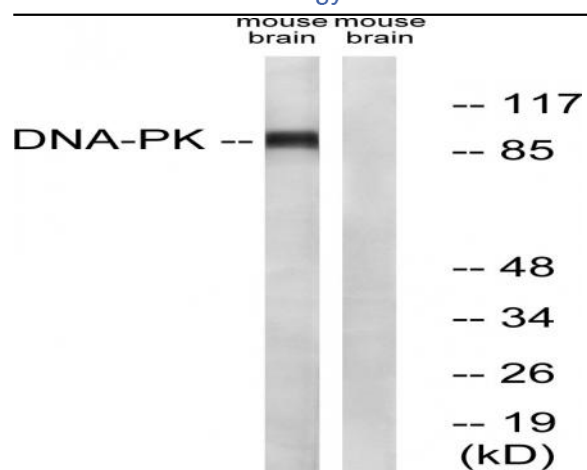
Western Blot analysis of various cells using Dynamin I Polyclonal Antibody



Western Blot analysis of 3T3 cells using Dynamin I Polyclonal Antibody



Immunohistochemistry analysis of paraffin-embedded human brain tissue, using Dynamin-1 Antibody. The picture on the right is blocked with the synthesized peptide.



Western blot analysis of lysates from mouse brain, using Dynamin-1 Antibody. The lane on the right is blocked with the synthesized peptide.