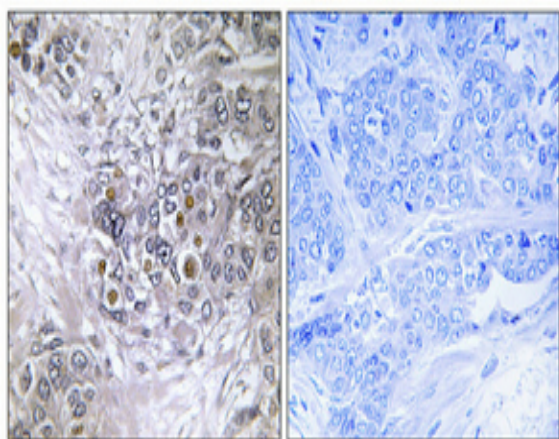


EFP Polyclonal Antibody

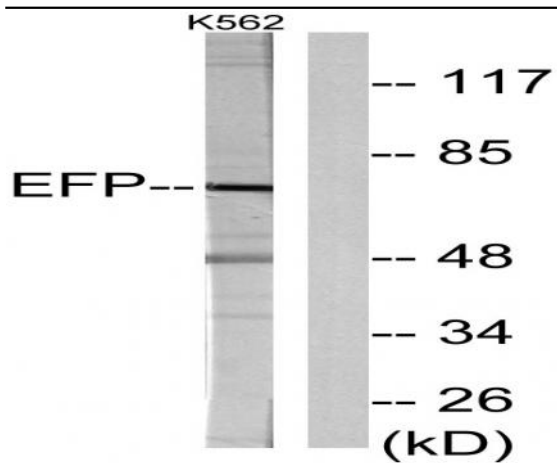
Catalog No :	YT1478
Reactivity :	Human;Mouse
Applications :	WB;IHC;IF;ELISA
Target :	EFP
Fields :	>>NF-kappa B signaling pathway;>>RIG-I-like receptor signaling pathway;>>Influenza A
Gene Name :	TRIM25
Protein Name :	E3 ubiquitin/ISG15 ligase TRIM25
Human Gene Id :	7706
Human Swiss Prot No :	Q14258
Mouse Swiss Prot No :	Q61510
Immunogen :	The antiserum was produced against synthesized peptide derived from human ZNF147. AA range:201-250
Specificity :	EFP Polyclonal Antibody detects endogenous levels of EFP protein.
Formulation :	Liquid in PBS containing 50% glycerol, 0.5% BSA and 0.02% sodium azide.
Source :	Polyclonal, Rabbit,IgG
Dilution :	WB 1:500 - 1:2000. IHC 1:100 - 1:300. ELISA: 1:10000.. IF 1:50-200
Purification :	The antibody was affinity-purified from rabbit antiserum by affinity-chromatography using epitope-specific immunogen.
Concentration :	1 mg/ml
Storage Stability :	-15°C to -25°C/1 year(Do not lower than -25°C)

Observed Band :	71kD
Cell Pathway :	RIG-I-like receptor;
Background :	The protein encoded by this gene is a member of the tripartite motif (TRIM) family. The TRIM motif includes three zinc-binding domains, a RING, a B-box type 1 and a B-box type 2, and a coiled-coil region. The protein localizes to the cytoplasm. The presence of potential DNA-binding and dimerization-transactivation domains suggests that this protein may act as a transcription factor, similar to several other members of the TRIM family. Expression of the gene is upregulated in response to estrogen, and it is thought to mediate estrogen actions in breast cancer as a primary response gene. [provided by RefSeq, Jul 2008],
Function :	function:Mediates estrogen action in various target organs.,similarity:Contains 1 B30.2/SPRY domain.,similarity:Contains 1 RING-type zinc finger.,tissue specificity:Ubiquitous.,
Subcellular Location :	Cytoplasm . Cytoplasm, Stress granule . Nucleus .
Expression :	Expressed in breast tumors (at protein level). Ubiquitous.
Sort :	5438
No4 :	1
Host :	Rabbit
Modifications :	Unmodified

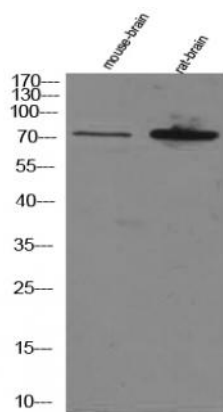
Products Images



Immunohistochemical analysis of paraffin-embedded Human breast cancer. Antibody was diluted at 1:100(4° overnight). High-pressure and temperature Tris-EDTA,pH8.0 was used for antigen retrieval. Negative contrl (right) obtaned from antibody was pre-absorbed by immunogen peptide.



Western blot analysis of lysates from K562 cells, using ZNF147 Antibody. The lane on the right is blocked with the synthesized peptide.



Western Blot analysis of various cell lysis. Primary Antibody was diluted at 1:1000. Secondary antibody(catalog#:RS23920) was diluted at 1:10000