

**Cyclophilin B Monoclonal Antibody(1B3)**

<b>Catalog No :</b>	YM3514
<b>Reactivity :</b>	Human;Rat;Mouse
<b>Applications :</b>	WB;IHC;IF
<b>Target :</b>	Cyclophilin B
<b>Gene Name :</b>	PPIB
<b>Protein Name :</b>	Peptidyl-prolyl cis-trans isomerase B (PPIase B) (EC 5.2.1.8) (CYP-S1) (Cyclophilin B) (Rotamase B) (S-cyclophilin) (SCYLP)
<b>Human Gene Id :</b>	5479
<b>Human Swiss Prot No :</b>	P23284
<b>Mouse Swiss Prot No :</b>	P24369
<b>Rat Swiss Prot No :</b>	P24368
<b>Immunogen :</b>	Synthetic Peptide of Cyclophilin B
<b>Specificity :</b>	Cyclophilin B protein detects endogenous levels of Cyclophilin B
<b>Formulation :</b>	Liquid in PBS containing 50% glycerol, 0.5% BSA and 0.02% sodium azide.
<b>Source :</b>	Monoclonal, Mouse
<b>Dilution :</b>	WB 1:1000-2000, IHC 1:100-200. IF 1:50-200
<b>Purification :</b>	The antibody was affinity-purified from mouse ascites by affinity-chromatography using specific immunogen.
<b>Concentration :</b>	1 mg/ml
<b>Storage Stability :</b>	-15°C to -25°C/1 year(Do not lower than -25°C)

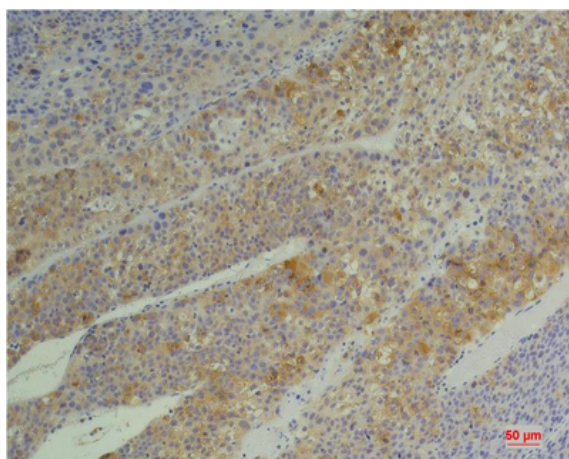
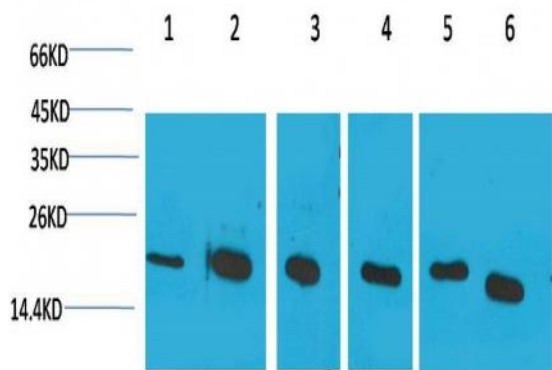
---

<b>Observed Band :</b>	21kD
<b>Background :</b>	The protein encoded by this gene is a cyclosporine-binding protein and is mainly located within the endoplasmic reticulum. It is associated with the secretory pathway and released in biological fluids. This protein can bind to cells derived from T- and B-lymphocytes, and may regulate cyclosporine A-mediated immunosuppression. Variants have been identified in this protein that give rise to recessive forms of osteogenesis imperfecta. [provided by RefSeq, Oct 2009],
<b>Function :</b>	catalytic activity:Peptidylproline (omega=180) = peptidylproline (omega=0).,caution:It is uncertain whether Met-1 or Met-9 is the initiator.,enzyme regulation:Cyclosporin A (CsA) inhibits CYPB.,function:PPLases accelerate the folding of proteins. It catalyzes the cis-trans isomerization of proline imidic peptide bonds in oligopeptides.,similarity:Belongs to the cyclophilin-type PPLase family. PPLase B subfamily.,similarity:Contains 1 PPLase cyclophilin-type domain.,subcellular location:Identified by mass spectrometry in melanosome fractions from stage I to stage IV.,
<b>Subcellular Location :</b>	Virion . (Microbial infection).; Endoplasmic reticulum lumen . Melanosome . Identified by mass spectrometry in melanosome fractions from stage I to stage IV (PubMed:17081065). .
<b>Expression :</b>	Brain,Fetal brain cortex,Prostate,Skin,
<b>Sort :</b>	4745
<b>No4 :</b>	1
<b>Host :</b>	Mouse
<b>Modifications :</b>	Unmodified

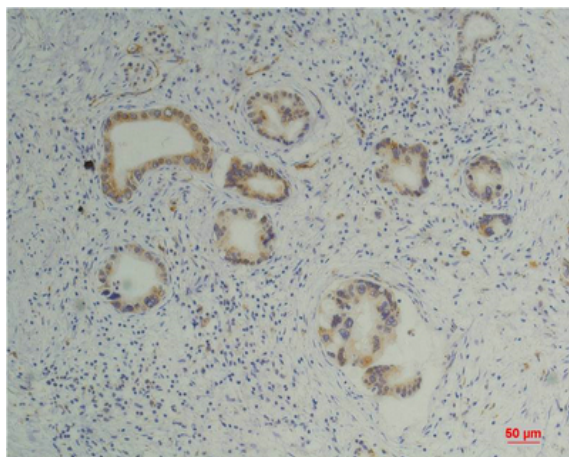
---

## Products Images

Western blot analysis of 1) Hela, 2) Jurkat, 3) 293T, 4) Rat Liver Tissue, 5) 3T3, 6) HepG2 with Cyclophilin B Mouse mAb diluted at 1:2,000.



Immunohistochemical analysis of paraffin-embedded Human Hepatocarcinoma using Cyclophilin B Mouse mAb diluted at 1:200.



Immunohistochemical analysis of paraffin-embedded Human Pancreatic Carcinoma using Cyclophilin B Mouse mAb diluted at 1:200.