

## EMR1 Polyclonal Antibody

<b>Catalog No :</b>	YT1544
<b>Reactivity :</b>	Human;Rat;Mouse;
<b>Applications :</b>	WB;ELISA
<b>Target :</b>	EMR1
<b>Gene Name :</b>	EMR1
<b>Protein Name :</b>	EGF-like module-containing mucin-like hormone receptor-like 1
<b>Human Gene Id :</b>	2015
<b>Human Swiss Prot No :</b>	Q14246
<b>Mouse Swiss Prot No :</b>	Q61549
<b>Immunogen :</b>	The antiserum was produced against synthesized peptide derived from human EMR1. AA range:818-867
<b>Specificity :</b>	EMR1 Polyclonal Antibody detects endogenous levels of EMR1 protein.
<b>Formulation :</b>	Liquid in PBS containing 50% glycerol, 0.5% BSA and 0.02% sodium azide.
<b>Source :</b>	Polyclonal, Rabbit,IgG
<b>Dilution :</b>	WB 1:500 - 1:2000. ELISA: 1:5000. Not yet tested in other applications.
<b>Purification :</b>	The antibody was affinity-purified from rabbit antiserum by affinity-chromatography using epitope-specific immunogen.
<b>Concentration :</b>	1 mg/ml
<b>Storage Stability :</b>	-15°C to -25°C/1 year(Do not lower than -25°C)
<b>Observed Band :</b>	98kD

**Background :** This gene encodes a protein that has a domain resembling seven transmembrane G protein-coupled hormone receptors (7TM receptors) at its C-terminus. The N-terminus of the encoded protein has six EGF-like modules, separated from the transmembrane segments by a serine/threonine-rich domain, a feature reminiscent of mucin-like, single-span, integral membrane glycoproteins with adhesive properties. Multiple alternatively spliced transcript variants encoding different isoforms have been found for this gene. [provided by RefSeq, Jan 2012],

**Function :** alternative products:Comment=Additional isoforms seem to exist,function:Could be involved in cell-cell interactions.,similarity:Belongs to the G-protein coupled receptor 2 family. LN-TM7 subfamily.,similarity:Contains 1 GPS domain.,similarity:Contains 6 EGF-like domains.,tissue specificity:Wide expression; increased levels in peripheral blood mononuclear cells.,

**Subcellular Location :** Cell membrane ; Multi-pass membrane protein .

**Expression :** Expression is restricted to eosinophils.

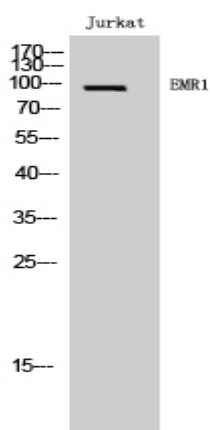
**Sort :** 5534

**No4 :** 1

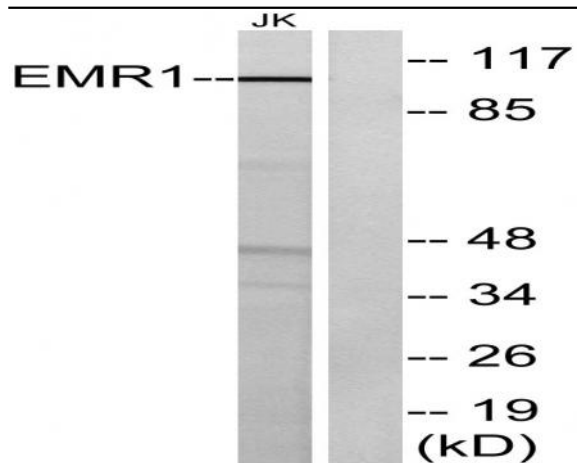
**Host :** Rabbit

**Modifications :** Unmodified

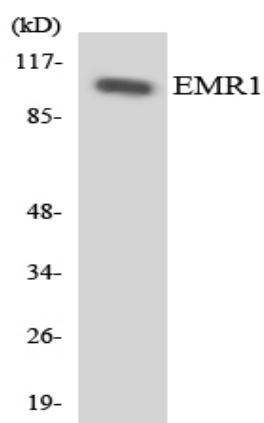
## Products Images



Western Blot analysis of Jurkat cells using EMR1 Polyclonal Antibody



Western blot analysis of lysates from Jurkat cells, using EMR1 Antibody. The lane on the right is blocked with the synthesized peptide.



Western blot analysis of the lysates from HUVEC cells using EMR1 antibody.