

Emx1 Polyclonal Antibody

Catalog No :	YT1549
Reactivity :	Human;Mouse;Rat
Applications :	WB;ELISA
Target :	Emx1
Gene Name :	EMX1
Protein Name :	Homeobox protein EMX1
Human Gene Id :	2016
Human Swiss Prot No :	Q04741
Mouse Gene Id :	13796
Mouse Swiss Prot No :	Q04742
Immunogen :	The antiserum was produced against synthesized peptide derived from human EMX1. AA range:181-230
Specificity :	Emx1 Polyclonal Antibody detects endogenous levels of Emx1 protein.
Formulation :	Liquid in PBS containing 50% glycerol, 0.5% BSA and 0.02% sodium azide.
Source :	Polyclonal, Rabbit,IgG
Dilution :	WB 1:500 - 1:2000. ELISA: 1:40000. Not yet tested in other applications.
Purification :	The antibody was affinity-purified from rabbit antiserum by affinity-chromatography using epitope-specific immunogen.
Concentration :	1 mg/ml
Storage Stability :	-15°C to -25°C/1 year(Do not lower than -25°C)

Observed Band : 28kD

Background : function:Transcription factor, which in cooperation with EMX2, acts to generate the boundary between the roof and archipallium in the developing brain. May function in combinations with OTX1/2 to specify cell fates in the developing central nervous system.,similarity:Belongs to the EMX homeobox family.,similarity:Contains 1 homeobox DNA-binding domain.,tissue specificity:Cerebral cortex.,

Function : function:Transcription factor, which in cooperation with EMX2, acts to generate the boundary between the roof and archipallium in the developing brain. May function in combinations with OTX1/2 to specify cell fates in the developing central nervous system.,similarity:Belongs to the EMX homeobox family.,similarity:Contains 1 homeobox DNA-binding domain.,tissue specificity:Cerebral cortex.,

Subcellular Location : Nucleus . Cytoplasm . Might be shuttling between the nucleus and the cytoplasm.

Expression : Cerebral cortex.

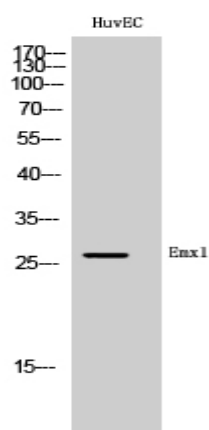
Sort : 5543

No4 : 1

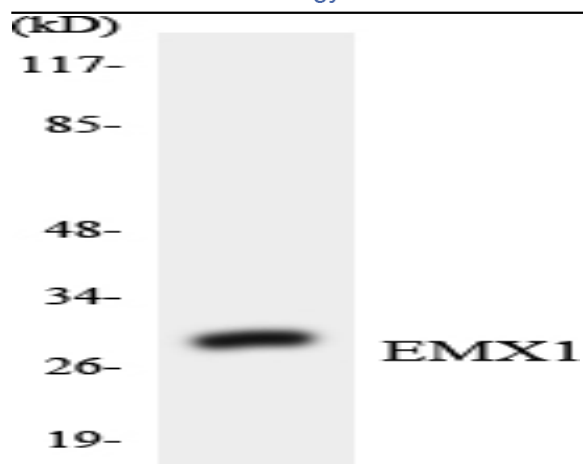
Host : Rabbit

Modifications : Unmodified

Products Images



Western Blot analysis of HuvEC cells using Emx1 Polyclonal Antibody cells nucleus extracted by Minute TM Cytoplasmic and Nuclear Fractionation kit (SC-003, Inventbiotech, MN, USA).



Western blot analysis of the lysates from Jurkat cells using EMX1 antibody.