

## ENaC $\delta$ Polyclonal Antibody

<b>Catalog No :</b>	YT1552
<b>Reactivity :</b>	Human
<b>Applications :</b>	WB;IF;ELISA
<b>Target :</b>	ENaC $\delta$
<b>Gene Name :</b>	SCNN1D
<b>Protein Name :</b>	Amiloride-sensitive sodium channel subunit delta
<b>Human Gene Id :</b>	6339
<b>Human Swiss Prot No :</b>	P51172
<b>Immunogen :</b>	The antiserum was produced against synthesized peptide derived from human SCNN1D. AA range:411-460
<b>Specificity :</b>	ENaC $\delta$ Polyclonal Antibody detects endogenous levels of ENaC $\delta$ protein.
<b>Formulation :</b>	Liquid in PBS containing 50% glycerol, 0.5% BSA and 0.02% sodium azide.
<b>Source :</b>	Polyclonal, Rabbit,IgG
<b>Dilution :</b>	WB 1:500 - 1:2000. IF 1:200 - 1:1000. ELISA: 1:20000. Not yet tested in other applications.
<b>Purification :</b>	The antibody was affinity-purified from rabbit antiserum by affinity-chromatography using epitope-specific immunogen.
<b>Concentration :</b>	1 mg/ml
<b>Storage Stability :</b>	-15°C to -25°C/1 year(Do not lower than -25°C)
<b>Observed Band :</b>	70kD
<b>Background :</b>	function:Sodium permeable non-voltage-sensitive ion channel inhibited by the

diuretic amiloride. Mediates the electrodiffusion of the luminal sodium (and water, which follows osmotically) through the apical membrane of epithelial cells. Controls the reabsorption of sodium in kidney, colon, lung and sweat glands. Also plays a role in taste perception.,similarity:Belongs to the amiloride-sensitive sodium channel family.,subunit:Heterotetramer of two alpha, one beta and one gamma subunit. A delta subunit can replace the alpha subunit.,

**Function :**

function:Sodium permeable non-voltage-sensitive ion channel inhibited by the diuretic amiloride. Mediates the electrodiffusion of the luminal sodium (and water, which follows osmotically) through the apical membrane of epithelial cells. Controls the reabsorption of sodium in kidney, colon, lung and sweat glands. Also plays a role in taste perception.,similarity:Belongs to the amiloride-sensitive sodium channel family.,subunit:Heterotetramer of two alpha, one beta and one gamma subunit. A delta subunit can replace the alpha subunit.,

**Subcellular Location :**

Cell membrane ; Multi-pass membrane protein .

**Expression :**

Brain,Hippocampus,Lung,Nasal epithelium,Testis,

**Sort :**

5549

**No4 :**

1

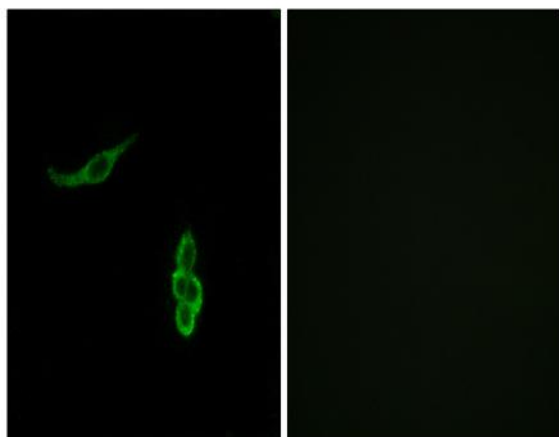
**Host :**

Rabbit

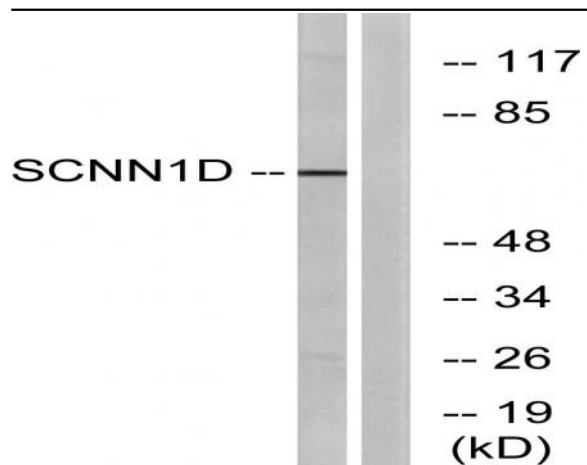
**Modifications :**

Unmodified

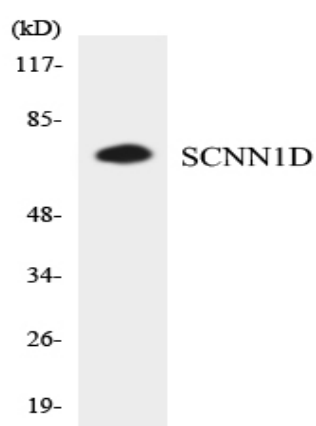
## Products Images



Immunofluorescence analysis of A549 cells, using SCNN1D Antibody. The picture on the right is blocked with the synthesized peptide.



Western blot analysis of lysates from RAW264.7 cells, using SCNN1D Antibody. The lane on the right is blocked with the synthesized peptide.



Western blot analysis of the lysates from HT-29 cells using SCNN1D antibody.