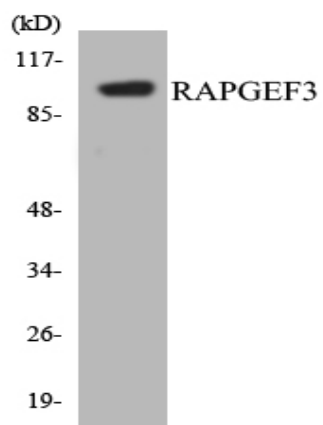


## Epac Polyclonal Antibody

<b>Catalog No :</b>	YT1571
<b>Reactivity :</b>	Human;Mouse;Rat
<b>Applications :</b>	WB;ELISA
<b>Target :</b>	Epac
<b>Fields :</b>	>>Rap1 signaling pathway;>>cAMP signaling pathway;>>Phospholipase D signaling pathway;>>Adrenergic signaling in cardiomyocytes;>>Leukocyte transendothelial migration;>>Long-term potentiation;>>Serotonergic synapse
<b>Gene Name :</b>	RAPGEF3
<b>Protein Name :</b>	Rap guanine nucleotide exchange factor 3
<b>Human Gene Id :</b>	10411
<b>Human Swiss Prot No :</b>	O95398
<b>Mouse Gene Id :</b>	223864
<b>Mouse Swiss Prot No :</b>	Q8VCC8
<b>Rat Gene Id :</b>	59326
<b>Rat Swiss Prot No :</b>	Q9Z1C8
<b>Immunogen :</b>	The antiserum was produced against synthesized peptide derived from human RAPGEF3. AA range:712-761
<b>Specificity :</b>	Epac Polyclonal Antibody detects endogenous levels of Epac protein.
<b>Formulation :</b>	Liquid in PBS containing 50% glycerol, 0.5% BSA and 0.02% sodium azide.
<b>Source :</b>	Polyclonal, Rabbit,IgG
<b>Dilution :</b>	WB 1:500 - 1:2000. ELISA: 1:40000. Not yet tested in other applications.

<b>Purification :</b>	The antibody was affinity-purified from rabbit antiserum by affinity-chromatography using epitope-specific immunogen.
<b>Concentration :</b>	1 mg/ml
<b>Storage Stability :</b>	-15°C to -25°C/1 year(Do not lower than -25°C)
<b>Observed Band :</b>	100kD
<b>Cell Pathway :</b>	Regulation of Actin Dynamics; AMPK
<b>Background :</b>	caution:It is uncertain whether Met-1 or Met-43 is the initiator.,domain:The DEP domain is involved in membrane localization independent from regulation by cAMP.,function:Guanine nucleotide exchange factor (GEF) for RAP1A and RAP2A small GTPases that is activated by binding cAMP.,similarity:Contains 1 cyclic nucleotide-binding domain.,similarity:Contains 1 DEP domain.,similarity:Contains 1 N-terminal Ras-GEF domain.,similarity:Contains 1 Ras-GEF domain.,tissue specificity:Widely expressed with highest levels in adult kidney, heart, thyroid and brain, and fetal kidney.,
<b>Function :</b>	caution:It is uncertain whether Met-1 or Met-43 is the initiator.,domain:The DEP domain is involved in membrane localization independent from regulation by cAMP.,function:Guanine nucleotide exchange factor (GEF) for RAP1A and RAP2A small GTPases that is activated by binding cAMP.,similarity:Contains 1 cyclic nucleotide-binding domain.,similarity:Contains 1 DEP domain.,similarity:Contains 1 N-terminal Ras-GEF domain.,similarity:Contains 1 Ras-GEF domain.,tissue specificity:Widely expressed with highest levels in adult kidney, heart, thyroid and brain, and fetal kidney.,
<b>Subcellular Location :</b>	Endomembrane system .
<b>Expression :</b>	Widely expressed with highest levels in adult kidney, heart, thyroid and brain, and fetal kidney.
<b>Sort :</b>	5588
<b>No4 :</b>	1
<b>Host :</b>	Rabbit
<b>Modifications :</b>	Unmodified

[Products Images](#)



Western blot analysis of the lysates from HeLa cells using RAPGEF3 antibody.