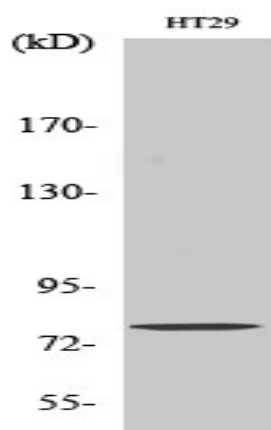


Eps8L1 Polyclonal Antibody

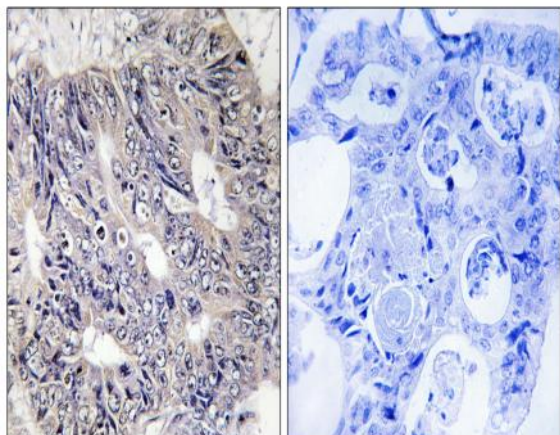
Catalog No :	YT1598
Reactivity :	Human;Mouse
Applications :	WB;IHC;IF;ELISA
Target :	Eps8L1
Gene Name :	EPS8L1
Protein Name :	Epidermal growth factor receptor kinase substrate 8-like protein 1
Human Gene Id :	54869
Human Swiss Prot No :	Q8TE68
Mouse Gene Id :	67425
Mouse Swiss Prot No :	Q8R5F8
Immunogen :	The antiserum was produced against synthesized peptide derived from human ES8L1. AA range:411-460
Specificity :	Eps8L1 Polyclonal Antibody detects endogenous levels of Eps8L1 protein.
Formulation :	Liquid in PBS containing 50% glycerol, 0.5% BSA and 0.02% sodium azide.
Source :	Polyclonal, Rabbit,IgG
Dilution :	WB 1:500 - 1:2000. IHC 1:100 - 1:300. IF 1:200 - 1:1000. ELISA: 1:20000. Not yet tested in other applications.
Purification :	The antibody was affinity-purified from rabbit antiserum by affinity-chromatography using epitope-specific immunogen.
Concentration :	1 mg/ml
Storage Stability :	-15°C to -25°C/1 year(Do not lower than -25°C)

Observed Band : 80kD**Background :** This gene encodes a protein that is related to epidermal growth factor receptor pathway substrate 8 (EPS8), a substrate for the epidermal growth factor receptor. The function of this protein is unknown. At least two alternatively spliced transcript variants encoding different isoforms have been found for this gene. [provided by RefSeq, Jul 2008],**Function :** function:Stimulates guanine exchange activity of SOS1. May play a role in membrane ruffling and remodeling of the actin cytoskeleton.,similarity:Belongs to the EPS8 family.,similarity:Contains 1 SH3 domain.,subunit:Interacts with ABI1. Part of a complex that contains SOS1, ABI1 and EPS8L2. Associates with F-actin.,tissue specificity:Detected in placenta.,**Subcellular Location :** Cytoplasm .**Expression :** Detected in placenta.**Sort :** 5684**No4 :** 1**Host :** Rabbit**Modifications :** Unmodified

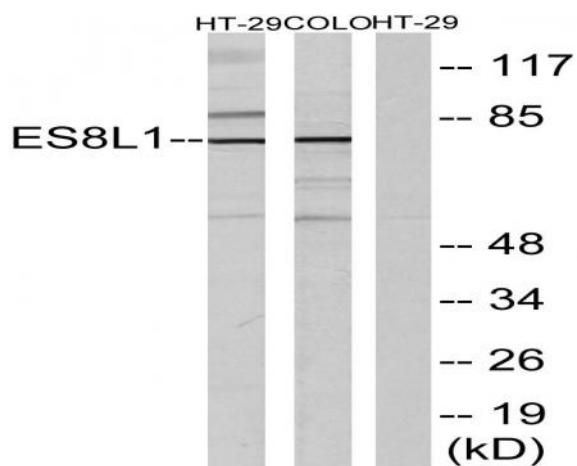
Products Images



Western Blot analysis of various cells using Eps8L1 Polyclonal Antibody



Immunohistochemistry analysis of paraffin-embedded human colon carcinoma tissue, using ES8L1 Antibody. The picture on the right is blocked with the synthesized peptide.



Western blot analysis of lysates from COLO205 and HT-29 cells, using ES8L1 Antibody. The lane on the right is blocked with the synthesized peptide.