

E-Ras Polyclonal Antibody

| | |
|------------------------------|---|
| Catalog No : | YT1607 |
| Reactivity : | Human;Mouse |
| Applications : | WB;IF;ELISA |
| Target : | E-Ras |
| Gene Name : | ERAS |
| Protein Name : | GTPase Eras |
| Human Gene Id : | 3266 |
| Human Swiss Prot No : | Q7Z444 |
| Mouse Swiss Prot No : | Q7TN89 |
| Immunogen : | The antiserum was produced against synthesized peptide derived from human ERAS. AA range:184-233 |
| Specificity : | E-Ras Polyclonal Antibody detects endogenous levels of E-Ras protein. |
| Formulation : | Liquid in PBS containing 50% glycerol, 0.5% BSA and 0.02% sodium azide. |
| Source : | Polyclonal, Rabbit,IgG |
| Dilution : | WB 1:500 - 1:2000. IF 1:200 - 1:1000. ELISA: 1:20000. Not yet tested in other applications. |
| Purification : | The antibody was affinity-purified from rabbit antiserum by affinity-chromatography using epitope-specific immunogen. |
| Concentration : | 1 mg/ml |
| Storage Stability : | -15°C to -25°C/1 year(Do not lower than -25°C) |
| Observed Band : | 25kD |

Background : This gene encodes a constitutively active member of the small GTPase Ras protein family. The encoded protein activates the phosphatidylinositol 3-kinase signal transduction pathway in undifferentiated stem cells, but is not expressed in differentiated cells. This gene may be involved in cancer and chemotherapy resistance. [provided by RefSeq, Dec 2012],

Function : enzyme regulation:Alternate between an inactive form bound to GDP and an active form bound to GTP. Activated by a guanine nucleotide-exchange factor (GEF) and inactivated by a GTPase-activating protein (GAP).,function:Ras proteins bind GDP/GTP and possess intrinsic GTPase activity. Plays an important role in the tumor-like growth properties of embryonic stem cells.,similarity:Belongs to the small GTPase superfamily. Ras family.,subunit:Interacts with PIK3CD.,

Subcellular Location : Cell membrane ; Lipid-anchor ; Cytoplasmic side .

Expression : Brain,

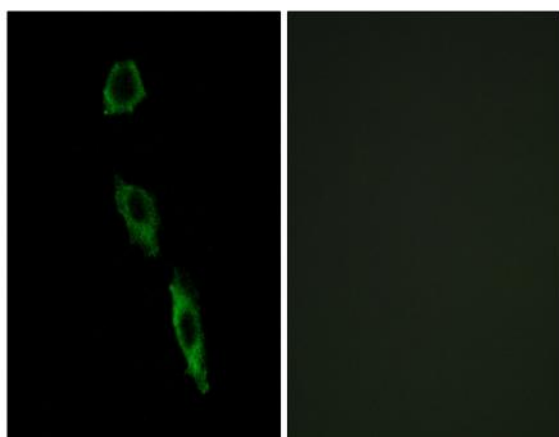
Sort : 5702

No4 : 1

Host : Rabbit

Modifications : Unmodified

Products Images



Immunofluorescence analysis of A549 cells, using ERAS Antibody. The picture on the right is blocked with the synthesized peptide.

