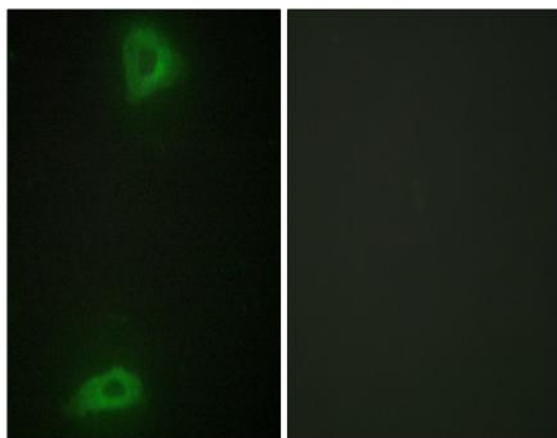


ERGIC-3 Polyclonal Antibody

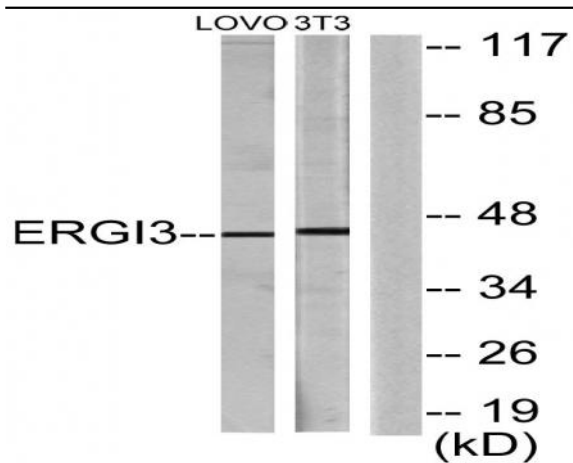
Catalog No :	YT1620
Reactivity :	Human;Mouse
Applications :	WB;IHC;IF;ELISA
Target :	ERGIC-3
Gene Name :	ERGIC3
Protein Name :	Endoplasmic reticulum-Golgi intermediate compartment protein 3
Human Gene Id :	51614
Human Swiss Prot No :	Q9Y282
Mouse Gene Id :	66366
Mouse Swiss Prot No :	Q9CQE7
Immunogen :	The antiserum was produced against synthesized peptide derived from human ERGIC3. AA range:321-370
Specificity :	ERGIC-3 Polyclonal Antibody detects endogenous levels of ERGIC-3 protein.
Formulation :	Liquid in PBS containing 50% glycerol, 0.5% BSA and 0.02% sodium azide.
Source :	Polyclonal, Rabbit,IgG
Dilution :	WB 1:500 - 1:2000. IHC 1:100 - 1:300. IF 1:200 - 1:1000. ELISA: 1:20000. Not yet tested in other applications.
Purification :	The antibody was affinity-purified from rabbit antiserum by affinity-chromatography using epitope-specific immunogen.
Concentration :	1 mg/ml
Storage Stability :	-15°C to -25°C/1 year(Do not lower than -25°C)

Observed Band :	43kD
Background :	function:Possible role in transport between endoplasmic reticulum and Golgi.,similarity:Belongs to the ERGIC family.,subcellular location:Cycles between the endoplasmic reticulum and the Golgi.,subunit:Interacts with ERGIC1/ERGIC32.,
Function :	function:Possible role in transport between endoplasmic reticulum and Golgi.,similarity:Belongs to the ERGIC family.,subcellular location:Cycles between the endoplasmic reticulum and the Golgi.,subunit:Interacts with ERGIC1/ERGIC32.,
Subcellular Location :	Endoplasmic reticulum-Golgi intermediate compartment membrane ; Multi-pass membrane protein . Golgi apparatus, cis-Golgi network membrane ; Multi-pass membrane protein . Endoplasmic reticulum membrane ; Multi-pass membrane protein . Cycles between the endoplasmic reticulum and the Golgi.
Expression :	Brain,Embryo,Fetal liver,Liver,Mammary gland,Skin,
Sort :	5731
No4 :	1
Host :	Rabbit
Modifications :	Unmodified

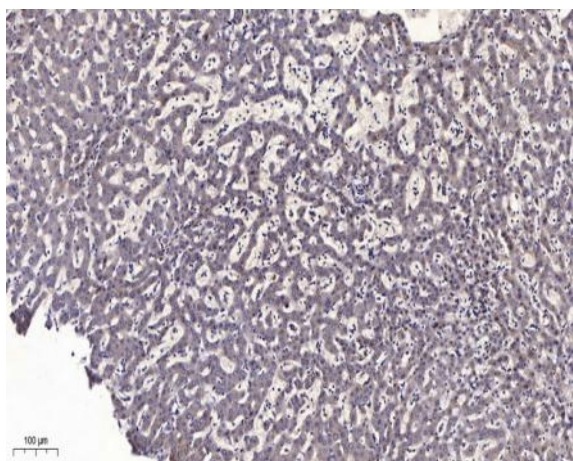
Products Images



Immunofluorescence analysis of HepG2 cells, using ERG13 Antibody. The picture on the right is blocked with the synthesized peptide.



Western blot analysis of lysates from LOVO and NIH/3T3 cells, using ERGI3 Antibody. The lane on the right is blocked with the synthesized peptide.



Immunohistochemical analysis of paraffin-embedded human liver cancer. 1, Antibody was diluted at 1:200(4° overnight). 2, Tris-EDTA,pH9.0 was used for antigen retrieval. 3,Secondary antibody was diluted at 1:200(room temperature, 45min).